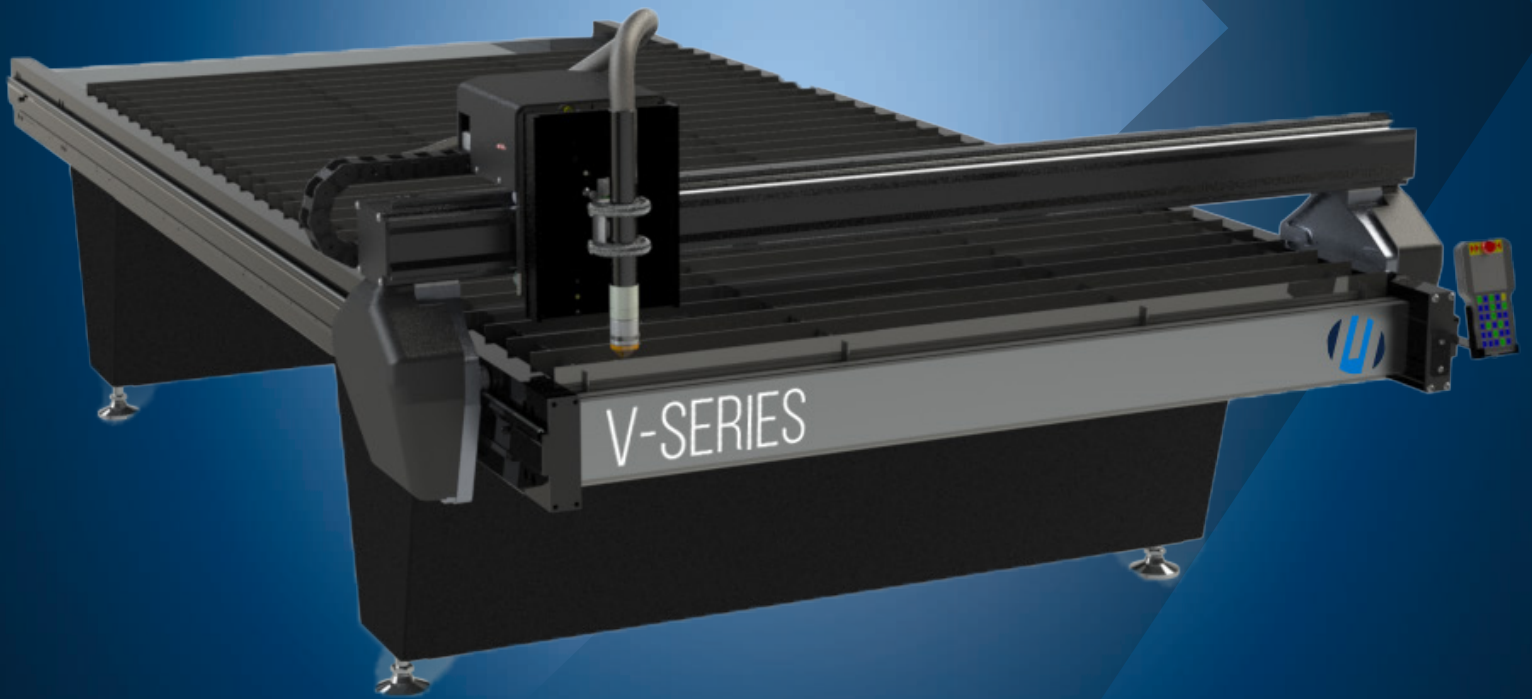


CNC V-Series Plasma

Reliable turnkey solutions for any application requiring value, performance, and versatility.



MULTICAM
Complete CNC Solutions

HIGH-PERFORMANCE...

...AT AN AFFORDABLE PRICE

V-SERIES PLASMA

The MultiCam V-Series CNC Plasma cuts with precision through a variety of materials for many common applications. Sign shops, marine fabricators, and machine and auto fabricators will love the V-Series' ability to cut through mild and stainless steel, aluminum, brass, and copper with minute precision.

The base frame is made of welded steel with stringers fabricated from aerospace-grade aluminum. Reinforced steel leg supports work together with all this to ensure a high degree of rigidity, minimal vibration, and – precision cutting.



FEATURES & SPECIFICATION GUIDE

PERFORMANCE / EASE OF USE / PRODUCTIVITY

Hand Held Operator Interface

All MultiCam V-Series Plasma systems come standard with MultiCam's easy-to-use Hand Held Operator Interface featuring graphic icons for all machine functions. With a few minutes of training any employee can operate a MultiCam V-Series Plasma.



Standard Working Surface

The standard work surface is constructed using mild steel to form a level, slat table. The slats are 2" (50mm) on center to provide maximum support and high volume air flow. The V-Series downdraft table comes with a high volume fume extraction plenum and 12" (305mm) diameter outlet.



Base Frame **V** SERIES PLASMA

The legs are welded steel assemblies with heavy structural channel cross members. The stringers are fabricated from heavy-duty aerospace grade aluminum with precision machined bearing datums. The base features an integrated dross pan/fume extraction plenum and reinforced steel leg supports.



Water Table **V** PRO PLASMA

Exclusive to the V-Pro plasma is a heavy-duty, all-steel water table with an integrated water-leveling bladder. This eliminates the need for a fume evacuator and will allow the V-Pro to operate a 200 amp torch capable of cutting up to 1.25" (32mm) thick material with unparalleled precision.



Gantry

The Gantry is custom engineered for maximum stiffness using high quality aluminum extrusion. The extrusion's heavy wall thickness and 4.75" (120mm) x 5.70" (145mm) rectangular structure combine to make the gantry extremely rigid.



Gantry Supports

Cast aluminum gantry supports are used to house X-axis drive motors and bearings. The supports are machined on a four axis horizontal machining center to ensure that they are parallel and perpendicular. Castings provide extreme stable support for the gantry.



Plasma Systems

Every MultiCam V-Series is equipped with a Hypertherm plasma cutting system. These systems achieve impressive cut speeds, consistent cut quality and exceptional consumable life with air or oxygen.

MultiCam V-Series Plasma with fume evacuation tables use Hypertherm PowerMax torches to provide a wide cutting capacity on metals including aluminum and mild steel.

The V-Pro series plasma with water table can accommodate Hypertherm's MAXPRO200 that is engineered for heavy-duty, high-capacity mechanized cutting.

Ask your MultiCam representative for additional details and capabilities of the Hypertherm PowerMax torches.

Featuring *Hypertherm* Torches



POWERMAX Systems are available with fume evacuation table format.



The **MAXPRO200** is exclusive to the V-Pro series with water table format.

Automatic Torch Height (ATH) Control

Automatic Torch Height is standard on all V-Series plasma systems. MultiCam systems are fully integrated with the motion control system where the torch height is automatically adjusted based on the current cutting parameters. This allows the system to be extremely responsive when cutting a wide variety of metals.



Plate Rider Option



MultiCam's optional plate rider with integrated ball bearings attaches to the Automatic Torch Height

assembly and is ideal for cutting thin gauge sheet metal.

V-Series

Size Chart (Inches)

Model	L	W	H	Table Size
1-101P	75	70	53	50 x 50
1-103P	125	70	53	50 x 100
1-204P	149	82	53	60 x 120
1-304P	149	102	53	80 x 120

Size Chart (mm)

Model	L	W	H	Table Size
1-101P	1905	1778	1347	1270 x 1270
1-103P	3175	1778	1347	1270 x 2540
1-204P	3785	2083	1347	1524 x 3048
1-304P	3785	2591	1347	2032 x 3048

Additional Features

- Automatic Torch Height: Standard
- Drive System (X,Y,Z Axes): Rack & Pinion
- Standard Work Surface: Steel Slat
- V-Pro Table Options: Water with integrated bladder or Fume Evacuation
- Value Line Series Keypad Interface includes MultiCam EZ Control and EZ Suite software.

V-Pro

Size Chart (Inches)

Model	L	W	H	Table Size
1-101P	85	74	53	50 x 50
1-103P	135	74	53	50 x 100
1-204P	155	84	53	60 x 120
1-304P	155	104	53	80 x 120

Size Chart (mm)

Model	L	W	H	Table Size
1-101P	2157	1861	1347	1270 x 1270
1-103P	3427	1861	1347	1270 x 2540
1-204P	3933	2114	1347	1524 x 3048
1-304P	3933	2627	1347	2032 x 3048

Hypertherm® Specifications

Specifications	Standard	Metric
Z-Axis Clearance:	2.6"	66mm
Z-Axis Travel:	3.5"	89mm
Repeatability:	+/- 0.001"	+/- 0.025mm
Cutting Speed:	800 IPM	20m/min
Rapid Traverse:	1200 IPM	30m/min

Conventional Plasma		
Powermax 45	45 amp torch	pierce & cut up to 0.25" / 6mm
Powermax 65	65 amp torch	pierce & cut up to 0.375" / 10mm
Powermax 85	85 amp torch	pierce & cut up to 0.50" / 12mm
Powermax 105	105 amp torch	pierce & cut up to 0.75" / 20mm
Powermax 125	125 amp torch	pierce & cut up to 1.00" / 25mm

Long life Oxygen Torch		
MaxPRO 200*	200 amp Torch	pierce & cut up to 1.25" / 32mm

*Only available with water table format.



MULTICAM
Complete CNC Solutions

1025 West Royal Lane
DFW Airport, TX 75261



By phone:
+1 972.929.4070
Hotline:
855.894.3136



By email:
sales@multicam.com



Or online at:
www.multicam.com