



# Two Trees Enclosure TE800

## 800x800x40mm

**SEND INQUIRY**

**BUY NOW**  
([HTTPS://TWOTREES3DOFFICIAL.COM/](https://twotrees3dofficial.com/))

Share



### Description

#### Description

Enclosure

## Adventure awaits.

Meet the Very resistant to high temperatures and perfectly enclosure for TS2. With a 800\*800\*400mm size, high temperature resistant cloth, USB Power cooling fan and PVC windows made for user of laser engraver and adventurers of all kinds.

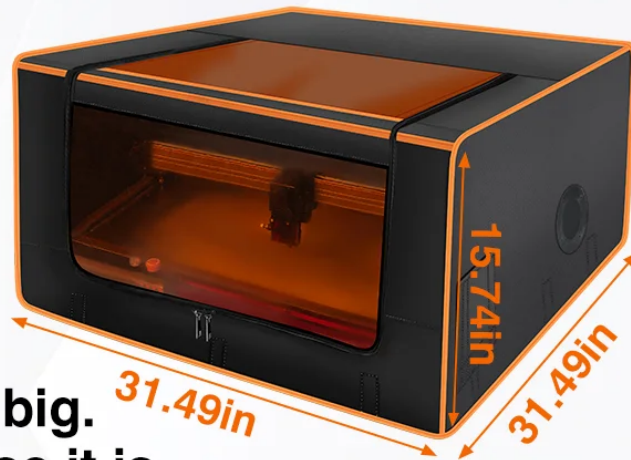


Even more to discover

## Everything to love about laser engraver TS2.

With features that help you stay safe, smokless, and eye protection, the enclosure that occupies very little space is also one you can use every day.

**800\*800\*400mm**



**Looks big.  
Because it is.**

The larger space fits perfectly into TwoTrees' latest generation of open laser engravers, the TS2, and even more machines on the market.



**Ready for Protection.**

The preferred high quality fabric provides you with a protective enclosure that is more resistant to high temperatures and has a longer life. It is a long-lasting, corrosion-resistant partner for your laser engraving machine with minimal wear and tear.

# SAFE FOR WORK

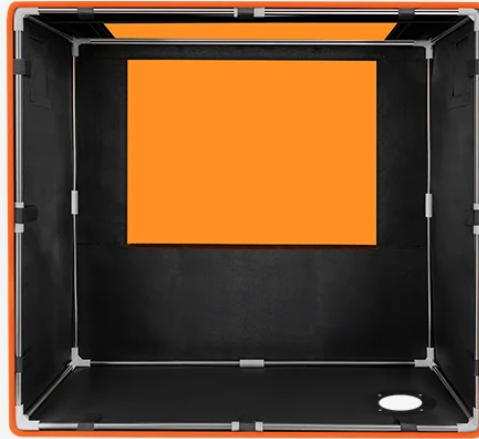
The Enclosure is made of high temperature resistant cloth, woven with glass fibre and coated with a high quality silicone coating. It maintains good softness, is resistant to stretching, easy to clean and has good heat and fire resistance.



Silica coating



Heat Resistant Fabric



heat resistance and an inability to ignite

## Features:

Excellent Thermal Properties Abrasion Resistant  
High Dimensional Stability Chemical Resistant

Up to

**500 °C**

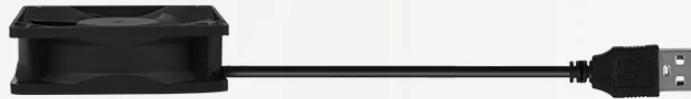
Of normal use

Up to

**2.95Kg**

As weight

The Enclosure is equipped with a router cooling fan to help circulate the fumes and dust generated during the laser engraving process and maintain air quality, is USB powered and nearly silent.



80mm X 25mm

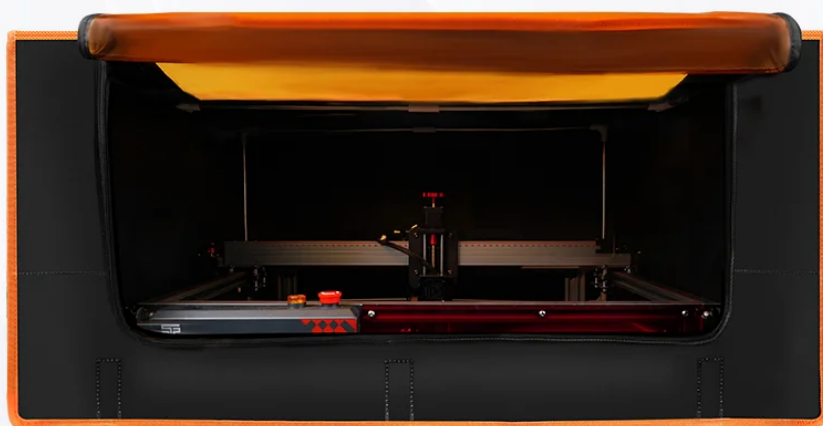
8cm DC 5V

USB Power

**Quick Exhaust. This is fresh.**  
Equipped with a ventilation fan that is connected to an inlet and an external ventilation pipe where the other end is connected to the filter system, which can effectively discharge and purify the smoke that occurs during the engraving process.







**Front size:  
640\*260mm**

BETTER DESIGN. It's clear for you. PVC display window on top allows you to filter and protect your eyes during observation.

**Front size:  
640\*260mm**

Close zipper. Make it easy. Twice machine stitches for a stronger protection.

## In the Box



Engraving machine protective cover X 1



T-shaped teex2



3 way connector X 10

Tube A 382.5mm X 2

Tube B 367mm X 4

Tube C 348.5mm X 2



2 way connector X 10



Fan X 1



Throat hoop X 1

Tube D 424.5mm X 2

Tube E 386.5mm X 12



Air guide X 1



Exhaust pipe X 1



Screw kit X 1



Tool Kit X 1



**Fast, free delivery**  
To all Europe and American

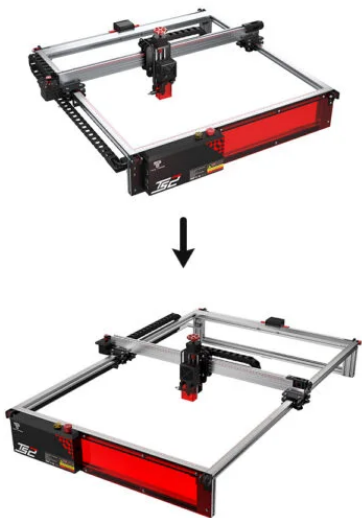


**Get help buying**  
Have a question?  
Chat online or get more  
information via WhatsApp.



**Pay with Credit Card**  
You can pay with  
Paypal or Credit Card

## Related products

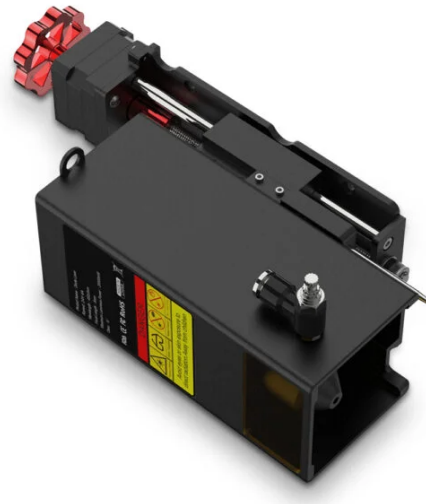


**Original**

**After upgrade**

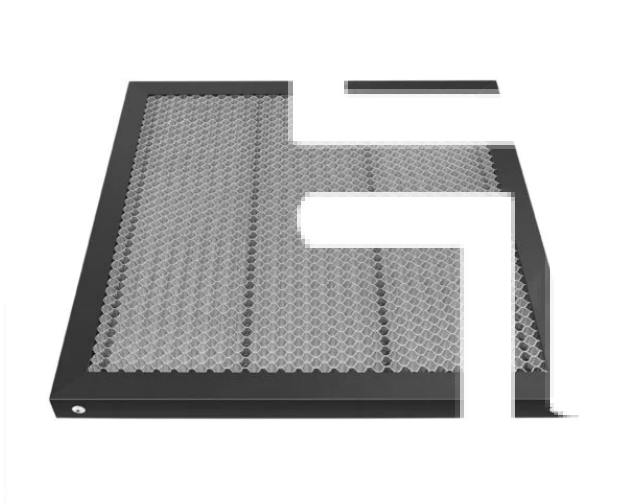
Extension Kit 450x780mm for Laser Engraver TS2  
(<https://twotrees3d.com/product/extension-kit-450x780mm-for-laser-engraver-cutter-ts2/>)

**Read more**  
(<https://twotrees3d.com/product/extension-kit-450x780mm-for-laser-engraver-cutter-ts2/>)



Two Trees 20W Laser Module for TS2  
(<https://twotrees3d.com/product/two-trees-20w-laser-module-for-ts2/>)

**Read more**  
(<https://twotrees3d.com/product/two-trees-20w-laser-module-for-ts2/>)



Laser Engraver Enclosure TE700 – Two Trees

Honeycomb Workbench Table (<https://twotrees3d.com/product/honeycomb-workbench-table/>)

Laser Engraver Enclosure TE700 (<https://twotrees3d.com/product/laser-engraver-enclosure-te700/>)

Read more (<https://twotrees3d.com/product/honeycomb-workbench-table/>)

Read more (<https://twotrees3d.com/product/laser-engraver-enclosure-te700/>)

## Know Us

## Support

## Purchase

About Us (<https://twotrees3d.com/two-trees/about-us/>)

Technical Support (<https://twotrees3d.com/support/technical-support/>)

Official Store (<https://twotrees3dofficial.com/>)

US Official Store (<http://twotrees3d.online>)

Be A Dealer (<https://twotrees3d.com/two-trees/be-a-dealer/>)

Download (<https://twotrees3d.com/support/download/>)

DE Official Store (<https://www.twotrees3d.de>)

Media Collaboration (<https://twotrees3d.com/collaboration/>)

Contact Us (<https://twotrees3d.com/two-trees/contact-us/>)

Get a Quote

## Join TwoTrees Creative Club




SUBSCRIBE