

Home » Products » Laser Welding Machine » 200W Stand Type Micro Jewelry Laser Welding Machine with External Water Cooler



200W Stand Type Micro Jewelry Laser Welding Machine with External Water Cooler

- External water cooler
- Strong laser power
- Special weld silver
- High quality laser beam with spot
- CCD Camera with Colorful Monitor

FOB Reference Price: Get Latest Price

Laser Power: 200 watts

Model Number: HS-OJW200

Contact Supplier



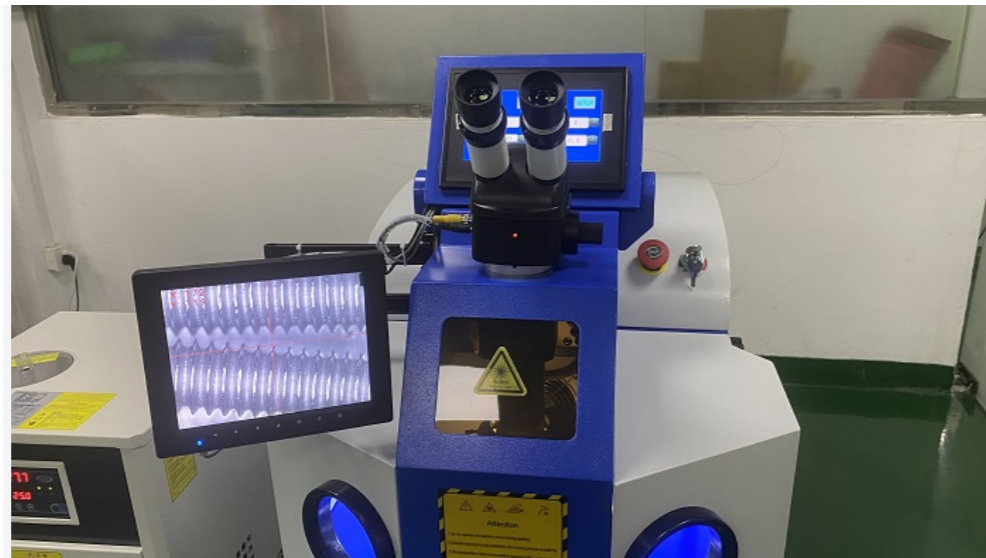
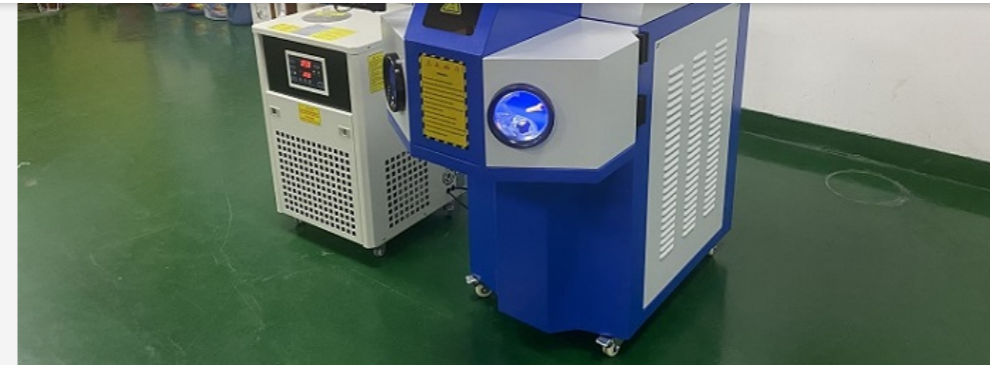
PRODUCT DESCRIPTION TECHNICAL PARAMETERS VIDEO WELD SAMPLES DISPLAY

PRODUCT DESCRIPTION





External Water Cooler of the jewelry welding machine is larger than the desktop, and the cooling effect is better. When the laser light path system is very well cooled, the efficiency and life of the laser will be better than that of the desktop type.



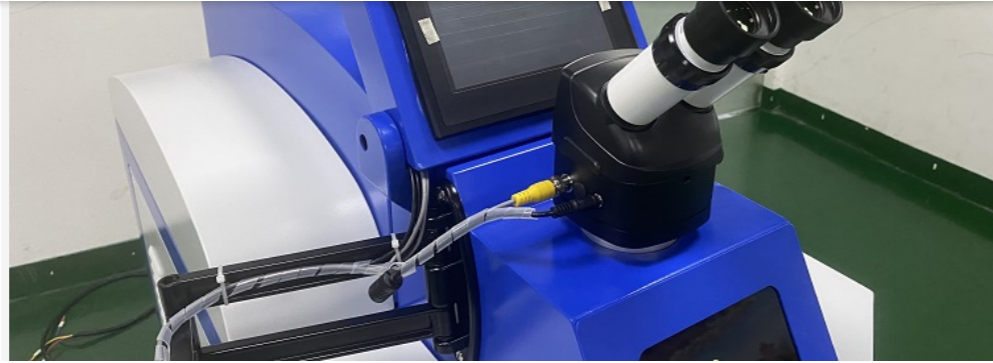
Control system

The machine control system easy to operate,Current ,Pulse,Frequency and Spot. The control system can save 20 different parameters, it can help weld different material and different thickness to save different parameters.

High-performance stable power supply

The power supply is one of most core part for complete laser welding machine,It occupies 50% of the cost of the whole machine. Therefore, a high-performance and stable power supply can be selected to assemble a high-quality laser jewelry welding machine. Because the power supply size of the integrated desktop jewelry laser welding machine is relatively large, the laser power is also stronger than the desktop power.

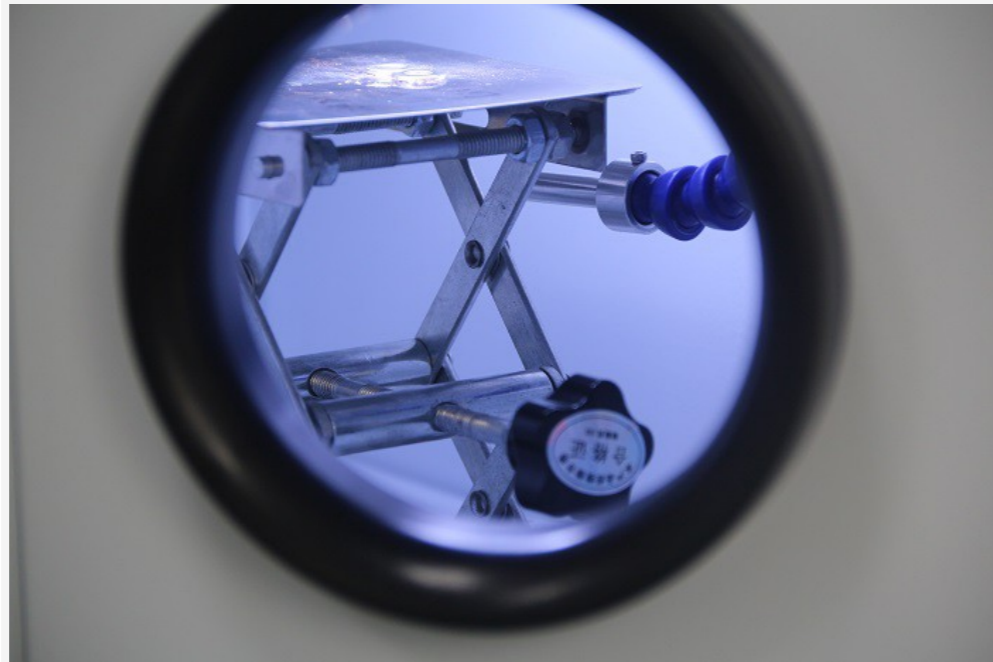




HD Microscope providing you watch very clear where do you weld position and weld result.

Emergency button

The yellow plastic cover can help you protect you from accidentally touching the emergency button. The height of the protective cover is higher than the emergency button to prevent someone from accidentally touching it.



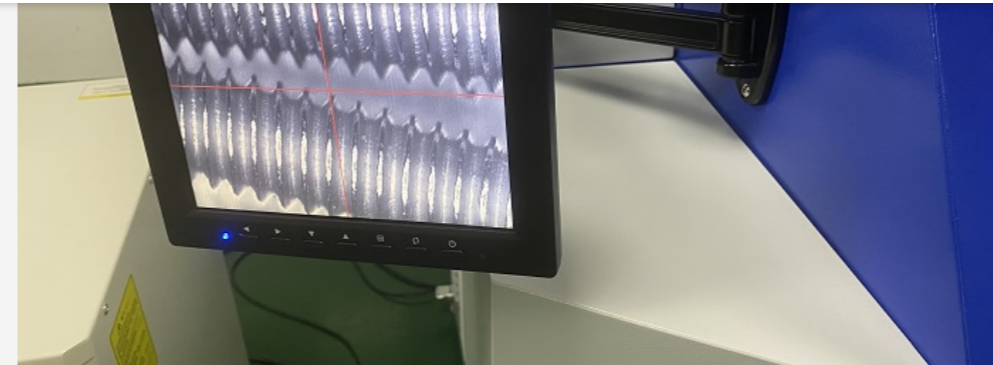
Focus Up and Down Table

This is focus up and down working table, it can help you easy to find the focus when you weld precious metal.

External and Built-in CCD Camera



system,one for external monitor to connect ccd camera converter, and touch panel is seperate with external monitor. Another one for built-in ccd camera, the touch panel with built-in ccd camera with same LCD screen.



TECHNICAL PARAMETERS

Technical Parameters	
Model number: HS-OJW200	Water cooler capacity: 3 litres
Laser power: 200W	Type of water: Distilled water or pure water
Laser type: YAG technology	Machine color: White
Laser wavelength: 1064nm	Microscope: MOTIC
Laser energy: 100 joules	Radiation protection: Anti-laser acrylic material
Pulse width: 0.1-20ms	Type of gas: Argon gas
Frequency: 1-50Hz	Air pressure:3 to 5 bar / 0.3 to 0.5 Mpa
Focus distance: 100mm	Power required: AC 220V ±10% 50/60Hz
Spot diameter: 0.3 to 2mm	Total power:5.5kw
Flash lamp size:8*100*250mm	Warranty period: 12 months
Flash lamp lifespan:3,000,000 times	Machine dimension: 11400x640x1350mm
Laser bar size:6*130mm	Net Weight: 220kg





200W Jewelry Laser Welder 2mm brass material



WELD SAMPLES DISPLAY





[English](#) [Español](#)

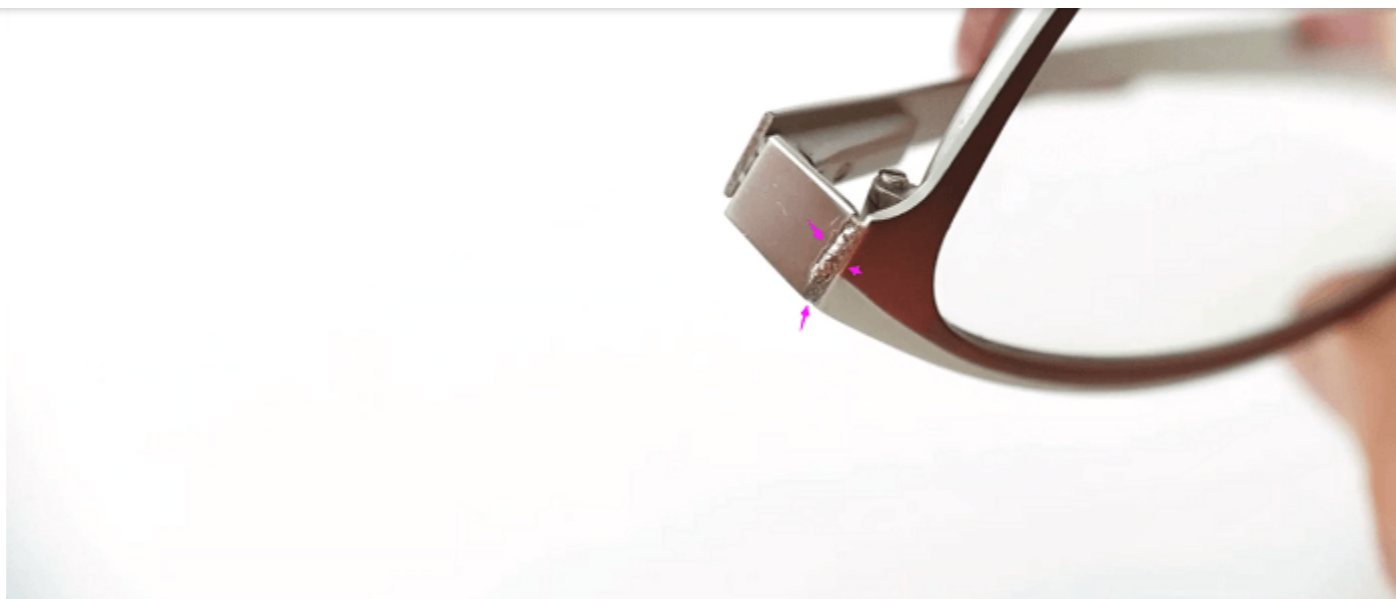
[Home](#) [Product](#) [Solution](#) [Customer Feedback](#) [News](#) [Contact us](#) [Q](#)





[English](#) [Español](#)

[Home](#) [Product](#) [Solution](#) [Customer Feedback](#) [News](#) [Contact us](#) [Q](#)





English Español

Home Product ▾ Solution ▾ Customer Feedback News ▾ Contact us 🔍



Send your message to this supplier

Recommend matching suppliers if this supplier doesn't contact me on Message Center within 24 hours.





*Message

Submit

If you are interested in our products, please contact us

Contact Us



Products

- Laser Welding Machine
- Laser cleaning machine
- Laser Cutting Machine
- Laser marking machine
- Co2 laser cutting and engraving machine

Contact Us

- +86 13421341274 +86 0755-2376 5340
- manager@cths laser.com
- Yingbo office building, No.61, East ring 2nd Road, Fukang community, Longhua street, Longhua, Shenzhen. China

Leave a Message

*Name

*Email

*Phone

*Message

Submit

