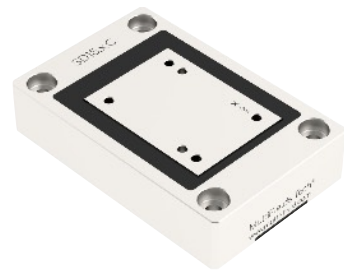


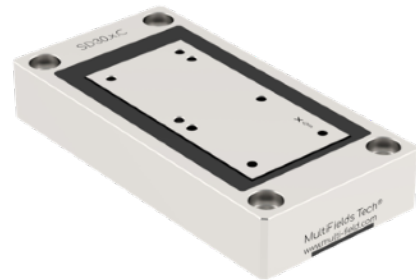
High-speed scanning motion– SD15/30.X.C

RT-Piezo scanning motion solution– compact,high dynamic,“SD Series”

High speed, Capacitive sensor, High resolution



SD15.x.C

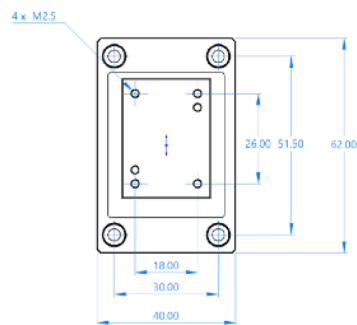


SD30.x.C

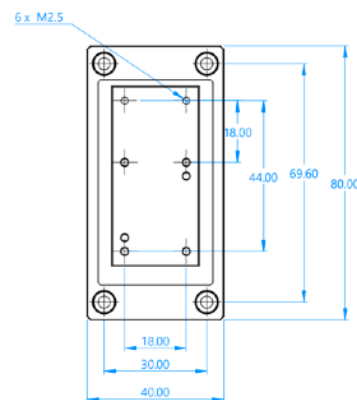
Feature

- Travel range in X: 15 um, 30 um;
- Size: 62 mm × 40 mm× 13.5 mm, 80 mm × 40 mm× 13.5 mm;
- Close loop resolution < 0.1nm;
- Capacitive sensor;
- High dynamic;
- Support Options:high vacuum (.HV) & ultra- high vacuum (.UHV)

2D:Drawings



SD15.x.C



SD30.x.C

SD15/30.x.C , Uniaxial piezoelectric · high-speed scanning motion

Optional Versions ⇨	SD15.x.C	SD30.x.C
	.HV, high vacuum compatible; .UHV, ultra-high vacuum compatible;	
Basic		
1 Active axes	X direction	
2 Footprint, high	62 mm × 40 mm× 13.5 mm	80 mm × 40 mm× 13.5 mm
3 Mainbody Materials	Aluminium alloy	
4 Travel Range	15 um (close loop)	30 um (close loop)
Motion		
5 Resolution	0.1 nm	0.2 nm
6 Repeatability	2 nm	4 nm
7 Linearity Error	0.035%	
8 Yaw	2 urad	
9 Pitch	2 urad	
10 Resonance Frequency	3.3 kHz	2.2 kHz
11 Resonance Frequency (300g)	1 kHz	0.625 kHz
12 Rigidity	28 N/um	18 N/um
13 Integrated sensor(close loop)	Capacitive	
Additional		
14 Operating temperature range	-20 ~ 80 °C	
15 Weight	250 g	350 g
16 Cable Length	1 m / D-Sub 3W3 Connectors	
17 Controller	Archimedes Series	