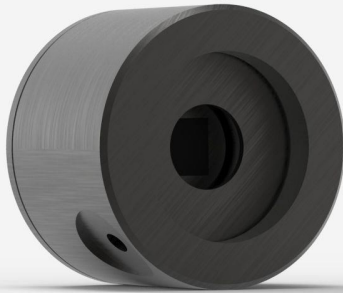


QE8SP-B-BL-D0

Pyroelectric detector for laser energy measurement up to 2.5 mJ.



KEY FEATURES

VERY LOW NOISE LEVELS

Noise levels of a photo detector, but with the high energies of a pyroelectric:

- 50 nJ with the MT coating
- 100 nJ with the BL coating

2 COATINGS AVAILABLE:

- BL: black coatings, sensitivity of 900 V/J, readings up to 400 Hz
- MT: metallic coating, sensitivity of 2400 V/J, readings up to 1000 Hz

SMART INTERFACE

Containing all the calibration data

COMPATIBLE STAND

[STAND-D-233](#)

SPECIFICATIONS

MEASUREMENT CAPABILITIES

Spectral range ¹	0.193 - 20 μm
Typical rise time	30 μs
Repeatability	<0.5%
Maximum repetition frequency	400 Hz
Typical energy sensitivity	900 V/J
Maximum measurable energy ²	2.5 mJ
Noise equivalent energy	150 nJ
Maximum pulse width	10 μs
Energy calibration uncertainty	± 4.0 %

1. For the calibrated spectral range, see the user manual.

2. With MAESTRO.

DAMAGE THRESHOLDS

Maximum average power density ¹	1 W/cm ²
Maximum energy density ²	50 mJ/cm ²
Maximum power	0.5 W

1. May vary with wavelength and average power.

2. At 1064 nm, 7 ns, 10 Hz. May vary with wavelength and pulse width.

PHYSICAL CHARACTERISTICS

Cooling	Convection
Aperture width	7.8 mm
Aperture height	7.8 mm
Absorber	BL
Dimensions	38.1 \varnothing X 27.4D mm
Weight	0.09 kg

ORDERING INFORMATION

Specifications are subject to change without notice. Refer to the user manual for complete specifications.

INTERESTED IN THIS PRODUCT?

GET A QUOTE

Find your local sales representative at gentec-eo.com/contact-us