



Why choose Laser Cutting?

Accuracy



We house multiple CO2 lasers that are the most accurate in the world holding up to a tolerance of **+/- 0.002"** when cutting various materials.

Bed Size



Bigger the better and we have the largest laser cutting surface area in North America. We can cut sheet material up to **60" x 96" (1524 x 2438.4 mm)** and roll sizes up to **70" (1778 mm)** wide.

Edge Quality

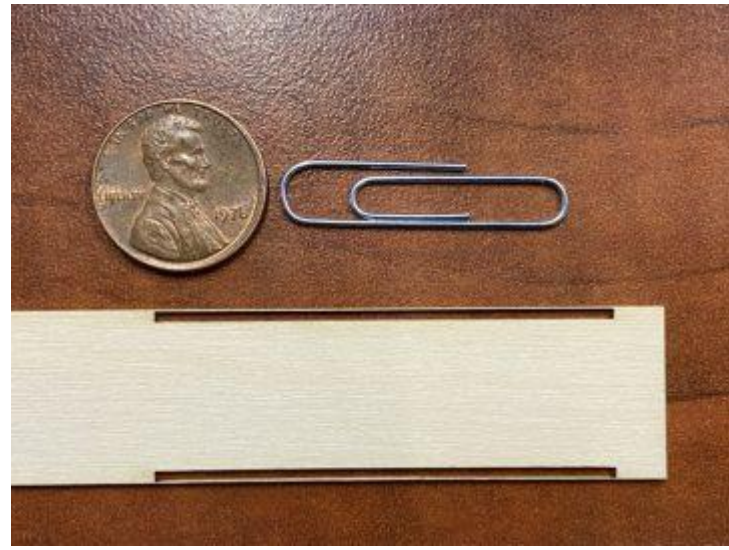


With some materials we can cut up to **1.0" (25.4 mm)** in thickness. A laser cut edge is smooth and with most materials it doesn't require any deburring or polishing.

Nesting



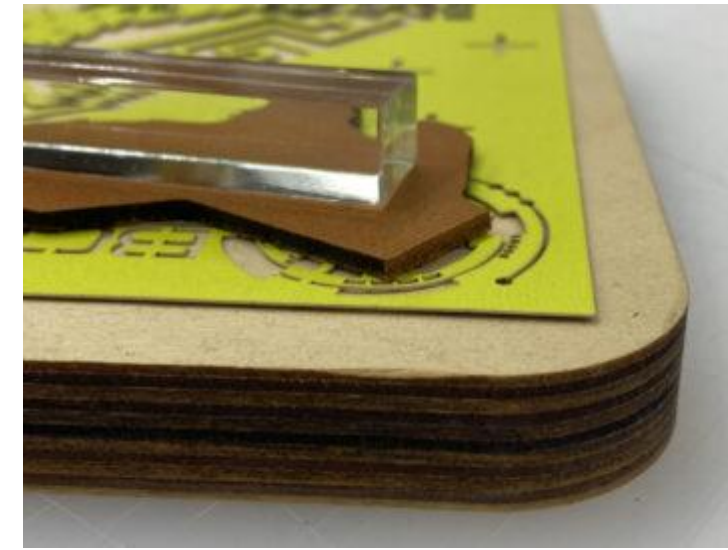
The kerf of the beam is so small that when nesting multiple pieces, the spacing in between can be as thin as **0.1" (2.54 mm)**. It creates less waste and can reduce material costs dramatically.



(<https://bostonlasers.com/wp-content/uploads/2022/03/Penny-Scale.jpg>)



(<https://bostonlasers.com/wp-content/uploads/2022/04/Leather-Detail-Laser-SM.png>)



(<https://bostonlasers.com/wp-content/uploads/2022/04/Edge-Quality-Various-SM.jpg>)

Common Laser Cutting Materials

ABS
Acetal
Acrylic
Adhesives
Cardboard
Chipboard
Foam
Film

Hardboard
Laminate
Leather
MDF
Paper
PEEK
PET
PETG

Polypropylene
PTFE
Romark®
Rubber
Textiles
VELCRO®
Veneer
Wood



 ([https://www.google.com/maps/place/Borjoma+Municipality+Municipality+Basim,+3m4!1s0x0:0xce341b651e75ae7d18m2!3d42.8362602!4d-](https://www.google.com/maps/place/Borjoma+Municipality+Municipality+Basim,+3m4!1s0x0:0xce341b651e75ae7d18m2!3d42.8362602!4d-94.941768)

