

## NEW PORTABLE FIBER LASER WELDING MACHINE

Power:1000w-2000w

RAYCUS/JPT



### Portable Mainframe

Laser source and chiller are integrated in one machine, easy to move; Upper and lower layer design for heat source isolation, Ensuring working environment of laser source; easy to dismant and maintain

metal welding machine, fiber welding machine, portable laser welding machine, laser welding



### Welding Database

30+ years laser welding experience of application of aerospace, metro, locomotive, etc. Material can be welded: carbon steel, stainless steel, aluminum etc.

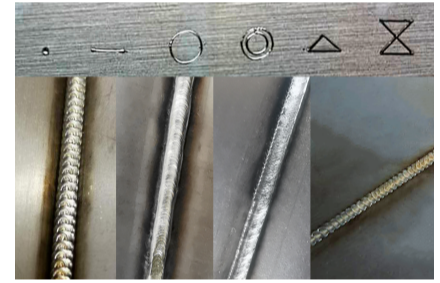
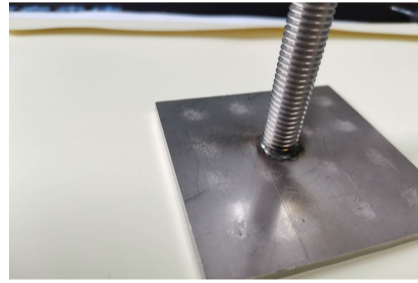
## Laser Welding Advantages



Higher Quality: Material welded by self-melting, no base material needed; Deeper penetration and higher welding strength; Welding surface bright and smooth, no need for polishing  
Higher Efficiency Efficiency improved several times than traditional arc welding

Cutting samples

Industry application



## Product Parameters



**Laser power** :1000W-2000W

**Laser Source** :Raycus/IPG/JPT

Send us a Message

TOP

E-mail \* (required)

Model \* (required)

Phone \* (required)

Message

Country \* (required)

[Submit](#)

Company

[Penta Laser](#)  
[Milestone](#)

Laser Machines

[Laser Cutting Machines](#)  
[Laser Tube Cutting Machines](#)  
[Laser Welding System](#)  
[3D Laser Cutting](#)  
[Auto Loading & Unloading System](#)  
[Large Format Fiber Laser Cutting](#)  
[Laser Cleaning Machine](#)

News

[Exhibition News](#)  
[Company News](#)

Technology

[Videos](#)  
[Files](#)  
[Industry Solutions](#)

Contacts



No. 398 Haitong Road, Binhai Park,  
Wenzhou Economic and Technological  
Development Zone, Zhejiang Province,  
China



+86 (027) 81736331  
+86 (027) 87457235  
Fax: +86 (027) 81736150



[candy@pentachutian.com](mailto:candy@pentachutian.com)  
[overseas@pentachutian.com](mailto:overseas@pentachutian.com)

