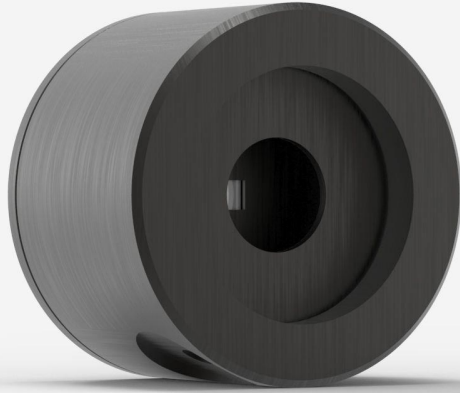


## PE3B-IN-D0

Photodiode detector for laser energy measurement up to 245 pJ.



### KEY FEATURES

#### VERY LOW NOISE LEVEL

Take measurements with a noise level as low as 8 fJ (model PE3B-Si only) with the M-LINK, MAESTRO and S-LINK monitors.

#### 3 SENSORS AVAILABLE

- PE-B-SI family: 3 and 10 mm  $\varnothing$  silicon sensors for 0.21 to 1.08  $\mu\text{m}$
- PE5B-GE: 5 mm  $\varnothing$ , germanium sensor for 0.8 to 1.65  $\mu\text{m}$
- PE3B-IN: 3 mm  $\varnothing$ , InGaAs sensor for 0.9 to 1.7  $\mu\text{m}$

#### SMART INTERFACE

Containing all the calibration data

#### COMPATIBLE STAND

[STAND-D-233](#)

## SPECIFICATIONS

### MEASUREMENT CAPABILITIES

|  |                      |
|--|----------------------|
| Spectral range <sup>1</sup>            | 900 - 1700 nm        |
| Typical rise time                      | 12 $\mu\text{s}$     |
| Maximum repetition frequency           | 1000 Hz              |
| Typical energy sensitivity             | 10 GV/J              |
| Maximum measurable energy <sup>2</sup> | 245 pJ               |
| Noise equivalent energy <sup>3</sup>   | 30 fJ                |
| Maximum pulse width                    | 10 $\mu\text{s}$     |
| Energy calibration uncertainty         | $\pm 4 \%$ (1310 nm) |

1. This detector is NIST-traceable at the calibration wavelength of 1310 nm. Typical values are used at other wavelengths.

2. At 1310 nm. See curves for maximum power at other wavelengths.

3. Nominal value. Actual value depends on environmental electromagnetic interference and wavelength.

### DAMAGE THRESHOLDS

|               |                    |
|---------------|--------------------|
| Maximum power | 1.18 $\mu\text{W}$ |
|---------------|--------------------|

### PHYSICAL CHARACTERISTICS

|                   |  |
|-------------------|--|
| Aperture diameter | 3 mm   |
| Absorber          | InGaAs   |
| Dimensions        | 38.1 $\varnothing$ x 27.4D mm&nbsp;&nbsp;&nbsp;&nbsp;&nbsp;&nbsp;& |
| Weight            | 0.09 kg  |

### ORDERING INFORMATION

|                |
|----------------|
| PE3B-In-D0     |
| PE3B-In-INT-D0 |
| PE3B-In-INE-D0 |
| PE3B-In-IDR-D0 |

## INTERESTED IN THIS PRODUCT?

GET A QUOTE

Find your local sales representative at [gentec-eo.com/contact-us](https://gentec-eo.com/contact-us)