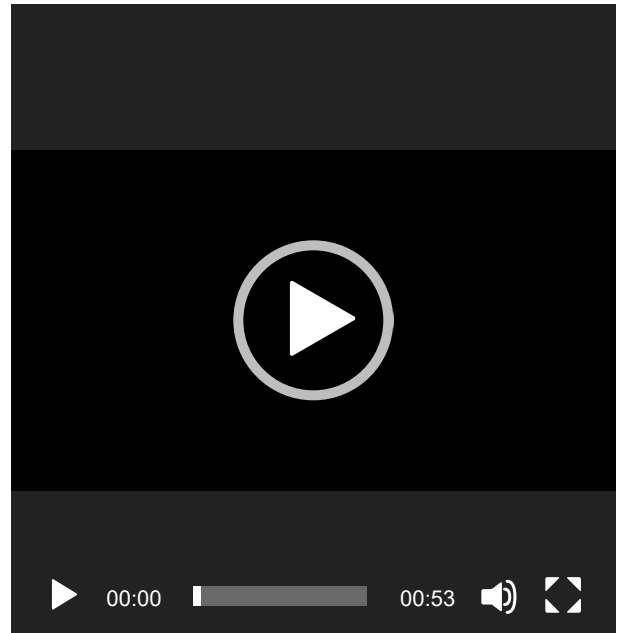
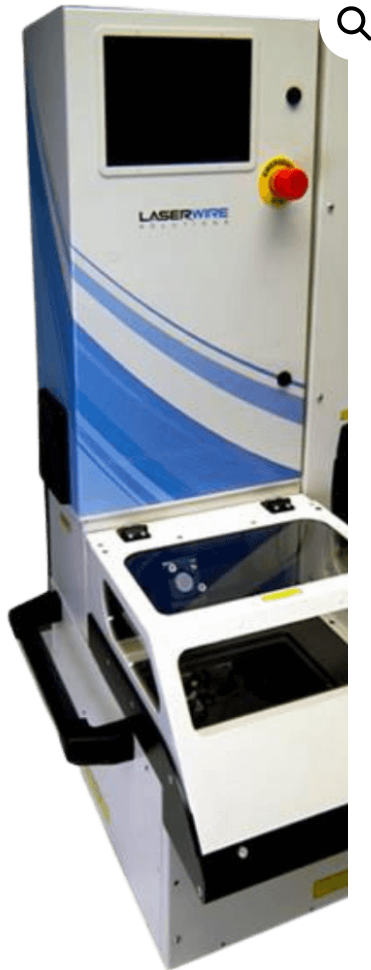


[HOME](#) > [MERCURY](#) > [MERCURY-2](#)

Mercury-2



The Mercury-2 is Laser Wire Solutions' workhorse laser wire stripper for stripping a wide range of polymer insulated wires, ranging in size from 0.001" – 0.2" (0.025 mm – 5 mm). The laser light reflects from the wire conductor meaning it can never be nicked or scraped.

Features include:

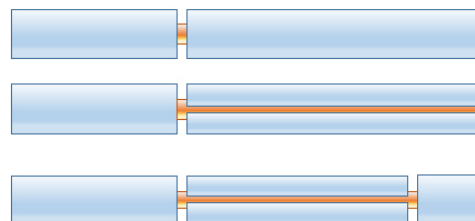


- A large 5" x 7" (127 mm x 178 mm) working area, allowing multiple wires to be stripped in one go.
- A standard fixture plate to position wires for improved accuracy. However, if required a custom fixture can be designed to meet your particular wire configuration.
- Dual laser focus nozzles to give a 360 degree strip around the wire (wires are stripped from above and below sequentially).
- Dual axis (X & Y) motion allows cross-cuts, window strips, cross-cuts with slits (for easy jacket removal).
- Sealed laser technology and therefore safe to use on an open shop floor.
- Simple to operate by means of a touchscreen with pre-programmed strip parameters.
- Virtually no maintenance and runs from standard electrical supply.

+ APPLICATION

Strip Types

The Mercury-2 dual axis optics allows flexible wire stripping:



From top to bottom:

- Cross-cut: laser separates the slug of insulation - operator pulls off as a second operation
- Slit: laser makes a cross cut but also slits along the insulation to aid peeling off a long length. Especially used for cable jackets.
- Window: like a slit, but two cross-cuts are made to allow a window section of insulation to be removed - used especially for accessing the shield of a cable for attaching to the shield.

Cable Types

The Mercury-2 is ideal for processing insulations and wires where a mechanical blade could cause damage. Examples are:

- removal of jackets from shielded multi-conductor cables
- removal of jackets and dielectrics from high performance microwave cables
- cutting aluminized mylar foils of twin-ax cables.

Materials

All polymer insulations can be stripped with the Mercury-2 system. The amount of melt, vaporization or chemical decomposition depends on the exact

polymers used. Below is a non-exhaustive list of materials that can be stripped:

- Fluoropolymers, such as PTFE, ETFE, PFA
- Polyethylene
- Nylon
- Silicone
- PVC
- Rubber
- Mylar
- Fiberglass
- Polyurethane
- Polyester

+ SPECS

Min. Outer Cable Diameter	0.025 mm
Max. Outer Cable Diameter	5 mm
Stripping Length Increments	0.1 mm
Strip types	Cross cuts
Max. Stripping Length	125 mm
Speed	Up to 250 mm/s
Cable Loading	Via fixture plate - up to 100 lbs
Dimensions (L x W x H)	720 x 620 x 100 mm

+ MORE INFO

The Laser Wire Solutions Mercury 2 strips wires and shielded cable ranging in size from 0.025 – 5 mm OD (0.001" – 0.2"). The laser is strongly absorbed by the wire/cable insulation causing it to melt or vaporize. By stripping from above and below a slug of insulation can be separated from the main wire/cable

insulation. The slug can be left on to keep the wire strands together, only being pulled off by the Operator immediately before termination. The laser light fully reflects from the wire conductor ensuring there can never be nicked or scraped. In the case of shielded cables, the laser can be used to cut off the jacket, the laser light reflecting from the shield or aluminized foil. The shield needs to be reasonably complete (>80% coverage) in order to protect the inner wire insulation.

The main applications are difficult to process insulations and wires where a mechanical blade could cause damage. Examples include removing the jackets from shielded multiconductor cables, removing the jackets and dielectrics from high performance microwave cables, cutting the aluminized mylar foils of twin-ax cables etc. Using the color touchscreen, the operator selects the desired stripping settings (laser power, strip type and strip positions) from the preprogrammed library and all parameters are automatically set. This unique software system avoids the need to program each laser move individually, with even complex jobs (ten cables with window strips) being programmed via a handful of parameters.

Mercury-2 begins the stripping process when the Operator starts the process via

the touchscreen or via the optional footswitch.

The wires/cables are held in position via a configurable fixture plate. Up to ten wires/ cables can be stripped as part of one operation. A standard fixture plate is supplied, but if required a custom plate can be designed for your requirement.

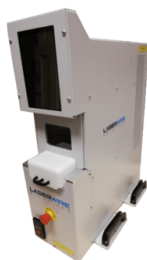
Enquiries and Sales

To find out more about the Mercury-2 Wire Stripping Machine or your exact requirements, please get in touch with one of our experts today.

CALL US ON: +44(0) 144 384 1738

SEND US A MESSAGE

You may also like...



Mercury-4E



Mercury-5



Mercury-4



Mercury-6

Related products



AUTOMATED MERCURY

CONTACT

+44 (0) 144 384
1738
INFO@LASERWI
RESOLUTIONS.
COM

**LASER WIRE
SOLUTIONS**
UNIT 12

SOLUTIONS

- > ABOUT
LASER WIRE
STRIPPING
- > LASER
MICRO-
SOLDERING
- > CONTRACT
MANUFACTU
RING
- > SUPPORT

INDUSTRIES

- > MEDICAL
WIRE
STRIPPING
- > AUTOMOTIV
E CABLE
STRIPPING
- > DATA CABLE
STRIPPING
- > AEROSPACE
AND
DEFENSE

KNOWLEDGE

- > KNOWLEDG
E CENTER
- > DOWNLOAD
S
- > COMPANY
NEWS
- > FREQUENTL
Y ASKED
QUESTIONS

BUSINESS
DEVELOPMENT
CENTRE, MAIN
AVENUE,
TREForest
INDUSTRIAL
ESTATE,
PONTYPRIDD,
CF37 5UR
UK

WIRE
STRIPPING



[TERMS & CONDITIONS](#) | [PRIVACY POLICY](#) | [COOKIE POLICY](#)

© COPYRIGHT LASERWIRE SOLUTIONS LTD 2022 - ALL RIGHTS RESERVED

WEBSITE BY: WATERS