

Easiest positioning of your graphics in KCAM

JUSTMARK AND EZCAD LASERSOFTWARE

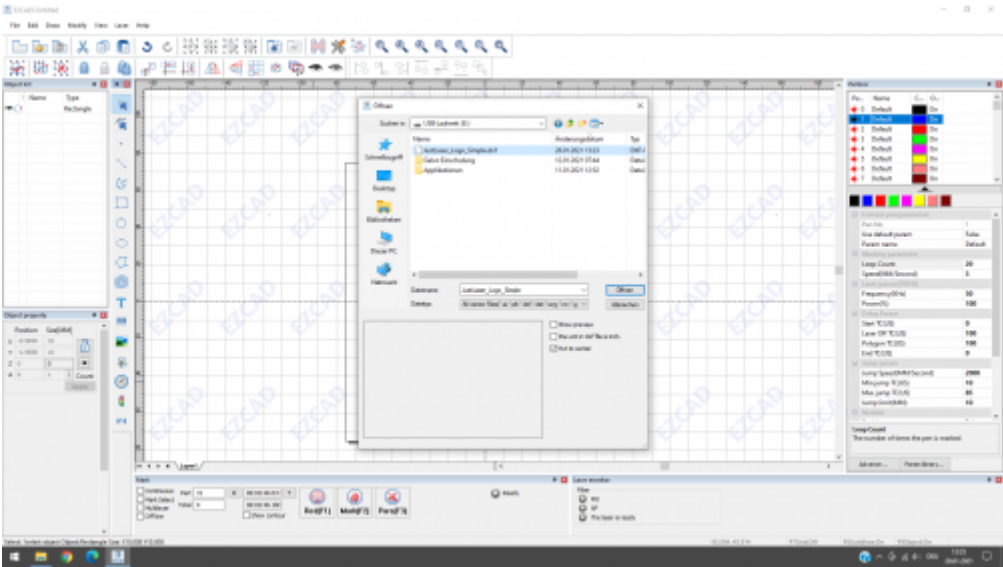
THE SOFTWARE FOR YOUR LASER MARKER

Every JustMark comes with the latest version of EZCAD laser software. With this state-of-the-art laser software, you're ready to go right out of the box.

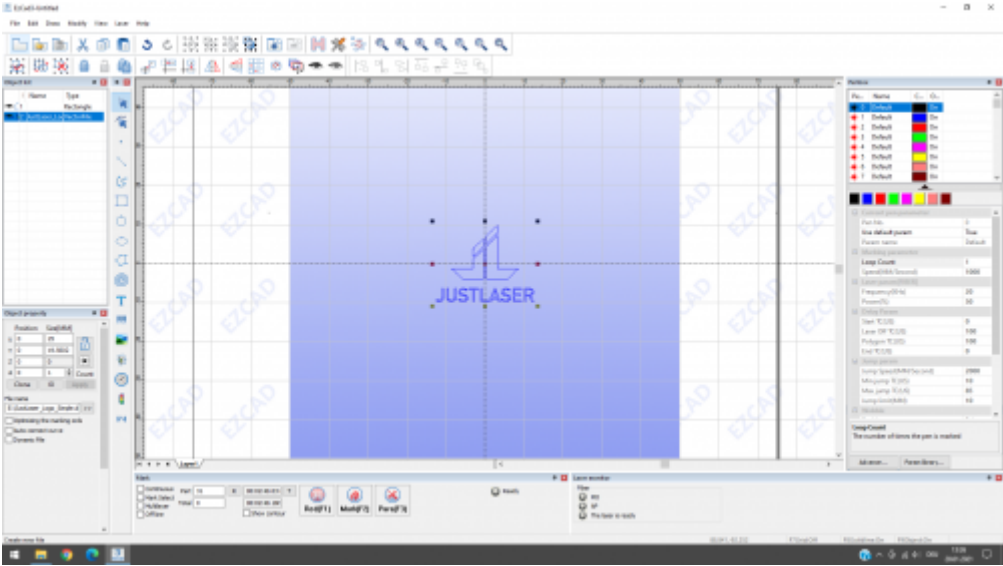


IMPORT OF ALL COMMON VECTOR FORMATS AND DATAMATRIX FORMATS

No more reformatting or reworking needed, thanks to the import of all common vector formats (AI, EPS, PDF, CDR, DXF, DWG, etc.) and data matrix formats (1D, 2D, 3D).



Easy import of most common vector graphics



Quick and easy positioning of your graphics in EZCAD

MORE INFO ABOUT THE LASER SOFTWARE?

[CONTACT US \(/EN/CONTACT/\)](#)



JustLaser GmbH
Am Thalbach 36
4600 Thalheim near Wels
Austria
+43 7242 90110 (tel: +43 7242 90110)
office@justlaser.com (<mailto:office@justlaser.com>)

[LASER MACHINES \(/EN/LASER-MACHINES/\)](#) [LASER CUTTER \(/EN/LASER-MACHINES/JUSTLASER-LARGE-LASERCUTTER/\)](#)
[LASER ENGRAVER \(/EN/LASER-MACHINES/JUSTLASER-LASER-ENGRAVER/\)](#) [COOKIES \(/HTTPS://WWW.JUSTLASER.COM/#\)](#)
[LASER CUTTER \(/EN/LASER-MACHINES/JUSTLASER-LARGE-LASERCUTTER/\)](#) [PRIVACY \(/EN/PRIVACY/\)](#)
[COOKIES \(/HTTPS://WWW.JUSTLASER.COM/#\)](#) [IMPRINT \(/EN/DISCLAIMER/\)](#)
[PRIVACY \(/EN/PRIVACY/\)](#)



<https://www.linkedin.com/company/justlaser/> https://www.youtube.com/channel/UCRR28oXgie2iDaN4TVQ_Ep9/ <https://www.facebook.com/justlaserghb/> https://www.instagram.com/justlaser_dach/



[/en/contac](#)