
Jewellery Laser Spot/Soldering Machine 100w/200w/300w optional



A new product specially developed for jewelry laser welding, mainly used for jewelry welding, hole filling, electric welding trachoma, repairing seam lines, parts joining, etc.. It has outstanding advantages compared with traditional welding methods. The equipment has small weld width, small heat-affected area, small product deformation, high weld strength and no porosity; it can be applied to jewelry laser spot welding, energy, pulse width frequency, spot size can be in a wide range;

Machine size



Product parameters

Model No.: TS-100 I TS-200 I TS-300

Output Power: 100 W I 200 W I 300 W – based on requirement

Single-pulse energy: 0-100 J

Machine Design Type: Desktop I Vertical

Laser Source: ND: YAG

Laser Wavelength: 1064 nm

Pump lamp: Pulsed Xenon Lamp

Pulse Width: 0.1-15 ms adjustable

Pulse Repeated Frequency: 1 — 20 Hz adjustable

Welding spot diameter: 0.2-1.5 mm adjustable

Observing System: Microscope I CCD – based on requirement

Cooling System: Water chiller

Power Supply: Single Phase AC 220V \pm 10%, 50Hz I 60HZ, 4 KW

Running Environment: Temperature 5°C-28°C Humidity 5%-70%

Product details

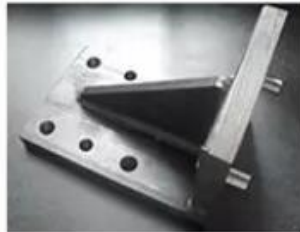




Applications

Suitable for all metals and alloys such as tin, niobium, aluminium, copper, zinc, gold, silver, chrome, nickel, titanium and many other metals and their alloys. As well as the welding of soft magnetic alloys of steel, etc.

Applications in various manufacturing and processing industries such as automotive, marine, aerospace, mobile phone communication, electronic components, glasses, clocks and watches, jewellery and ornaments, hardware, instruments, medical devices, automotive parts, craft and gift tools, decoration and advertising.



Product

link :

<https://www.goldmarklaser.com/jewellery-laser-spotsoldering-machine-100w200w300w-optional.html>