

中文



Dove prism

product description

A Dove prism is a type of reflective prism which is used to invert an image. Dove prisms are shaped from a truncated right-angle prism.

Applications :

[Get Price](#)

[Contact](#)

[Download](#)



**Intrinsic
Crystal**

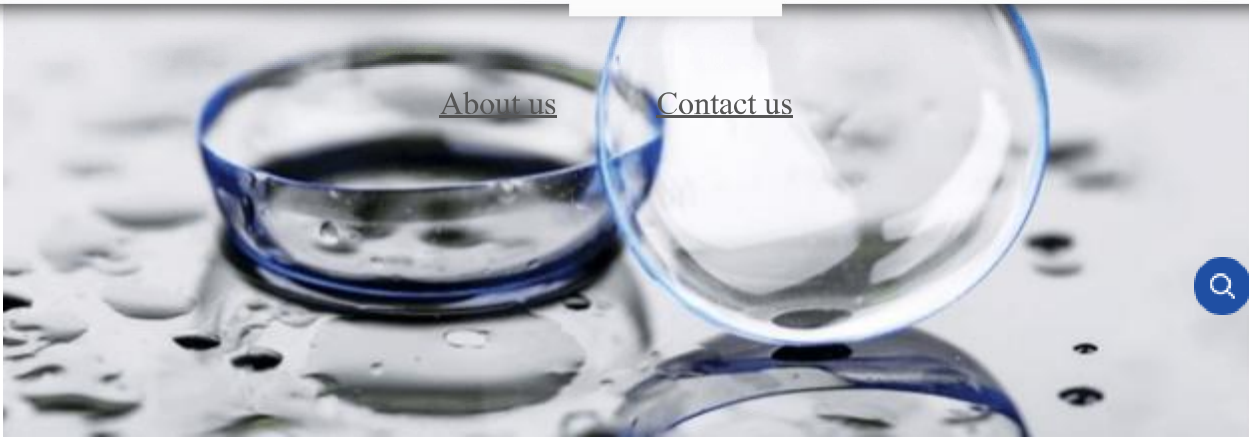
[Home](#)

[Products](#)

[Solution](#)

[Cases](#)

[Service](#)

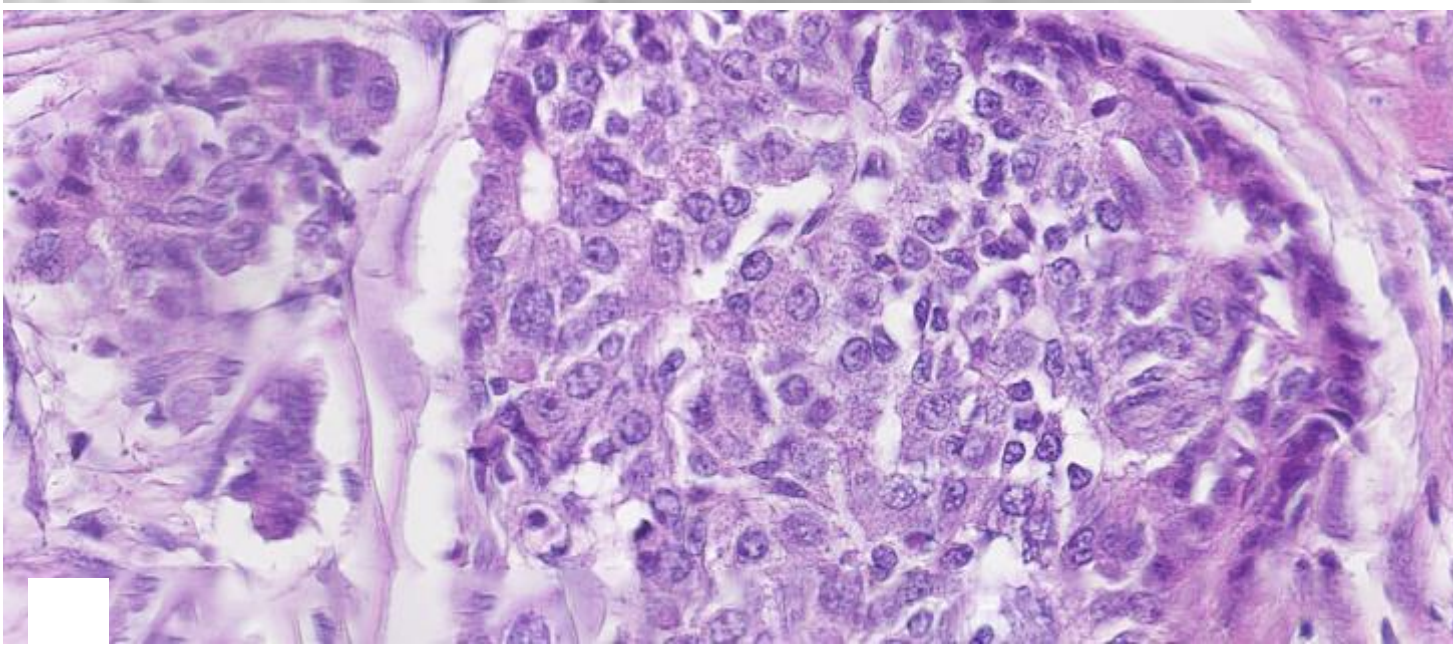


[About us](#)

[Contact us](#)



中文

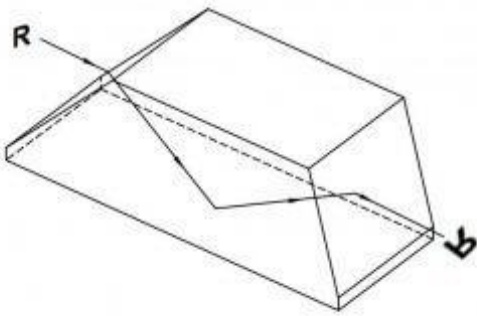




Product Parameters :



中文



parameter	Data
Diameter(mm)	1.5-300
Diameter (mm)	+/-0.02
Thickness Tolerance(mm)	0=/0.02
Centring Error(Arc minute)	<3
Surface Quality	20-10



Clear Aperture

[About us](#)

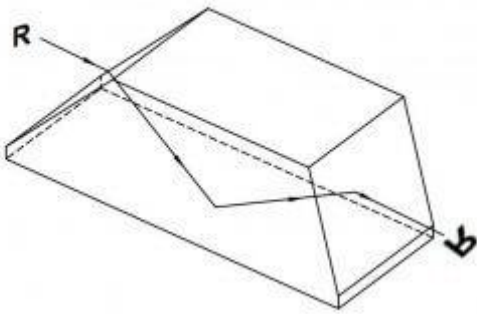
[Contact Us](#) More than 90%

Materials

BK7 optical glass and fused silica crystal



中文



Related Products



Send your Message

[About us](#)

[Contact us](#)

Name

Phone

Company Name

Mailbox



中文

Demand Notes

SUBMIT

Looking forward to providing you with satisfactory products and services.



• **CONTACT US**

[Tel : +86-335-7064518](tel:+86-335-7064518)
[;+86-335-7513879](tel:+86-335-7513879)

[Email : sales@icc.ltd](mailto:sales@icc.ltd)

Address : Xihu Road
1,HaiGang District, Hebei
Province,China 066000

• **PRODUCT**

[Crystal Material](#)

[Windows](#)

[Laser Lenses](#)

[Lenses](#)

[Prism](#)

[Infrared Optics](#)

[Coating](#)

[Optics](#)

[Others](#)

[ICC MALL](#)

• **ABOUT US**

[Company Profile](#)

[Development Path](#)

[Certifications](#)

[Factory Introduction](#)

[News](#)

• **SERVICE**

[R & D
Strength](#)

[service
Advantage](#)

[After Sales
Service](#)

[FAQ](#)

