

PRODUCTS



Please enter the key words...

HOME > PRODUCTS > PLASMA CUTTING > Heavy CNC flame and plasma cutting machines

PRODUCTS

WELDING MACHINE

LASER CUTTING

PLASMA CUTTING

Portable CNC flame and plasma cutting machines

Heavy CNC flame and plasma cutting machines

CNC pipe intersection cutting machines

AUTO WELDING SYSTEM

INTECUT-HT Heavy CNC flame and plasma cutting machines



PRODUCT DESCRIPTION

Steel structure table body to ensure durability and precision.
 Dual driving system on Y, track, pinion and gear system.
 Electric limits on Y, machine stops at ends. Safe for machine and operator.
 Separate driving system on X, track, pinion and gear system.
 Electric limits on Y, machine stops at ends. Safe for machine and operator.
 Automatic torch height controller on Z, You smile at a deformed plate.
 Higher speed and higher precision.
 Strong body to hold water bed table.
 Caution light to reminder people safety and machine's safety.
 Cable chain on X and on Y to protect cables.
 Loading can be done by parts or by completely assembled machine
 7" displayer, colorful interfaces, English, Russian, Spanish, Portuguese, French, Korean, Chinese
 44 shapes in controller library.

TECHNICAL PARAMETER

Model	INTECUT B
Power supply	1PH, 220V, 50HZ (Customised voltage is available)
Input capacity (W)	180
Controller displayer	7" LCD, colorful
Cutting width (mm)	2000
Cutting length	3000 Customised length is available
Cutting model	Flame or Plasma
Positioning speed (mm/min)	6000
Flame cutting thickness (mm)	80
Flame cutting speed (mm/min)	100-750
Oxygen pressure	≤ 1.5Mpa
Cutting gas	LPG, Propane, Acetylene, O2
Plasma	Up to 125A, Highly recommend Hypertherm/Victor to achieve good quality
Nesting software	FastCAM

WORKING PROCESS

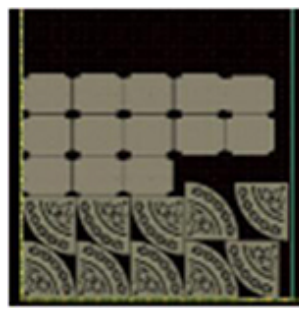


CONTROLLER

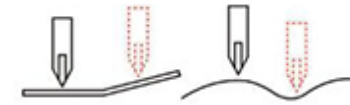


NESTING SOFTWARE-FOR REFERENCE





■AUTOMATIC TORCH HEIGHT CONTROLLER



■QUICK CONNECTION



■MACHINE AT SITES



FEEDBACK

Name *

Contact E-mail, Contact Number *

Demanding

SUBMIT

PRODUCTS

Welding Machine

Laser Cutting Machine

Plasma Cutting Machine

ABOUT US

Company Profile

Brand Story

Company Culture

CONTACT US

Address:7177 Waiqingsong Road.Qingpu District,Shanghai,PRC

Post Code:201700 E-mail:sales@hugong.com

Tel:+86-21-51211666 Fax:+86-21-69715399 | Privacy Policy

CONNECT WITH US

