

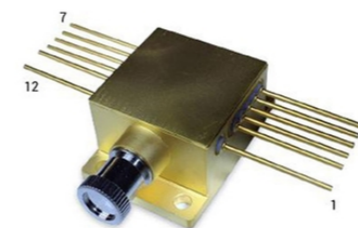
# ALC-0375-00060-FM200.22

## Features

- Compact size
- Detachable 200µm SMA-fiber
- Thermistor
- Power monitor

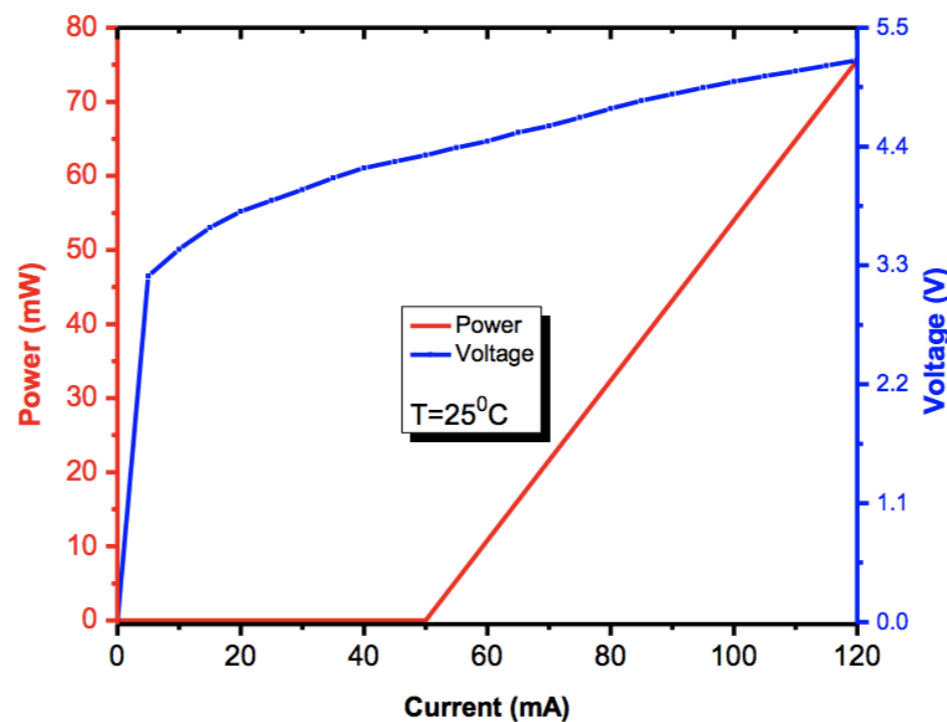
## Applications

- Medical
- Solid State Laser Pumping
- Stereolithography



## Specifications

Optical Parameters	Value	Units
Center Wavelength	375	nm
Wavelength Tolerance	±5	nm
Spectral Width (FWHM)	0.7	nm
Wavelength Temp. Coefficient	0.07	nm/°C
Output Power	>60	mW
Operating Current	110	mA
Operating Voltage	<5.4	V
Threshold Current	50	mA
Fiber Parameters	Value	Units
Fiber Core Diameter	200	µm
Numerical Aperture	0.22	
Fiber Connector	SMA-905	



## Pin-Out

1. TEC (+)
2. Thermistor
3. Not connected
4. Laser Diode Anode
5. Laser Diode Anode
6. Power monitor (+)
7. Power monitor (-)
8. Laser Diode Cathode
9. Laser Diode Cathode
10. Not connected
11. Thermistor
12. TEC (-)

