

## Handheld laser marker

Hand held laser marking machine is mini size, easy to move and operate. If you are doing a laser marking services, it will be a very good choice for you.

Handheld laser head, can flexibly moving marking position. Therefore, usually it takes 20W or 30W fiber laser source.

Because low power fiber laser sources are small size, can install in compact case.



### Handheld laser marking machine features



- + Laser Marking Materials
- + Operating Temperature
- + Working Humidity
- + System / Compatible Formats
- + Laser Marker Package
- + Warranty

GET MORE DETAILS

Model	HF20	Optional
Peak Laser Power	20W	30W / 50W
Wave Length	1064nm±10nm	/
Beam Quality	M <sup>2</sup> <1.3	/
Laser Repetition Frequency	30-400/50-200KHZ	1-2000/50-200KHZ
Marking Speed	≤9000mm/s	/
Marking Area	≤110*110mm	≤200*200mm/≤300*300mm
Min Line Width	0.01mm	/
Min Character	0.2mm	/
Gross Power	600W	800/1000W
Repeat Precision	±0.002mm	/
Laser Module Life	100000h	/
Power	220V/50HZ	/
Cooling Style	Air Cooling	/



Hand held laser marking machine videos



INQUIRY NOW 



How does a handheld laser marker work?



Excellent Quality



Compact Size

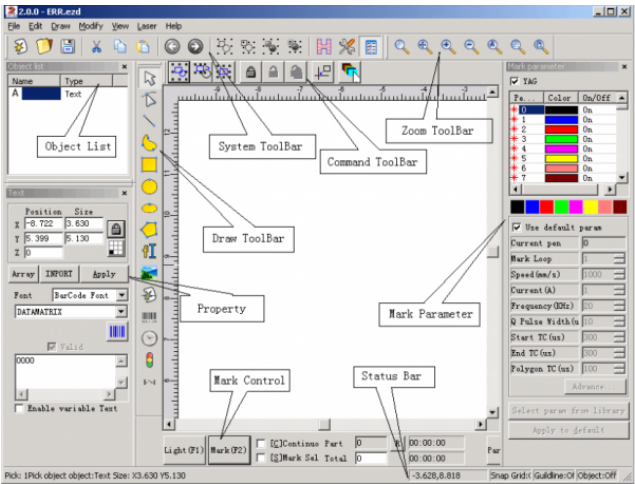


Flexible Operation



Wide Application





Handheld laser marker has exactly the same function as the standard fiber laser marking machine.

In other words, it also controls the marking operation by the marking software. Beside, the software can be installed on a laptop. In that case, laser marking software can edit text, pictures, photos, LOGO and other documents.

Also, there is no need to adjust the focal length. Because it comes with a bracket, the focal length is fixed. So the operation is very convenient. As you know, it's small and very easy to carry and store.

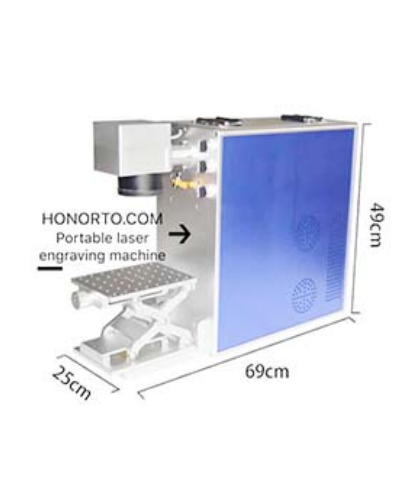
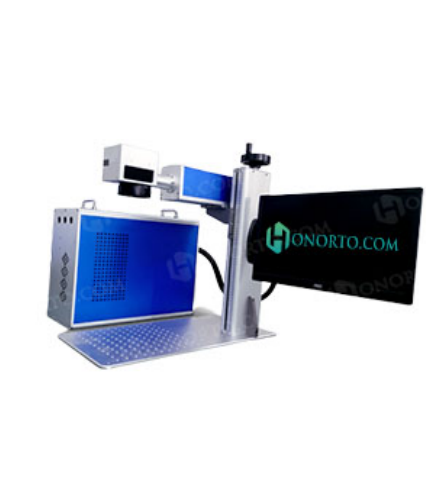
Especially, the laser head has two switch control buttons at the handle. Therefore, it can flexibly control the laser beam and red light. Even more its working life can reach 100,000 hours, without attenuation and delicate engraving.

In addition, small size laser marking machine is usually applied for these products. For example, promotional gifts, watch, electronic and communication products, hardware tools, jewelry, cookware, advertising materials, and so on.







GET FREE SAMPLE MARKING SERVICE 



Other portable laser marking machines



Share This Laser Machine, Choose Your Platform!



Related Projects



Recent Works



Contact Info

Add: Third Floor, Block B,  
Weidahua Industrial Park,  
Dalang Street, Longhua New  
District, Shenzhen, China  
Phone: 0086 0755 33231281  
Mobile: 0086 18770960630  
Fax: 0086 0755 33231281  
Email: sales@wodoll.com

News

- > Laser marking face masks
- > 5 reasons for the uneven marking effect of the fiber laser marking machine
- > What is CO2 laser marker?

Get Social

