



Home

About Us

Products

News

Support

Showroom

Contact Us

PRODUCT DETAIL

Home / Product List / Laser Cutting Machine / Laser Welding Machine / Handheld Fiber Laser Welding Machine



NEW

Handheld Fiber Laser Welding Machine

★★★★★ 0 Reviews

- 1. Up to 4X faster than TIG.
- 2. Easy operation and maintenance
- 3. High quality welding result
- 4. Compact and good design

Model: HW

Brand: HARSLE

Quantity:

[Inquire](#)

[Add to Basket](#)



Share to: [f](#) [t](#) [w](#) [i](#) [p](#) [l](#)

Features

Product Description

Specification

Features

The handheld fiber laser welding machine is easy to operate and can be operated with simple training; it can produce beautiful products without the need for a master. It is light and flexible and can weld any part of the

PRODUCT LIST

- Press Brake
- Shearing Machine
- Punching Machine
- Hydraulic Press
- Rolling Machine
- Ironworker and Notcher
- Laser Cutting Machine
- Door Production Line

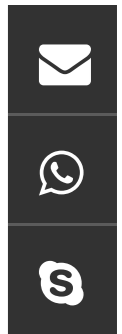


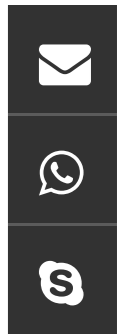
Video >>>



workpiece, making welding more efficient, safe, energy efficient and environmentally friendly.

Product Description





HW

Laser Welding Machine



HANDHELD LASER WELDING



- Up to 4X faster than TIG.
- Easy to learn and operate with highest process consistency.
- High quality welding of thick, thin and reflective metals without distortion, deformation, undercut or burn-through.





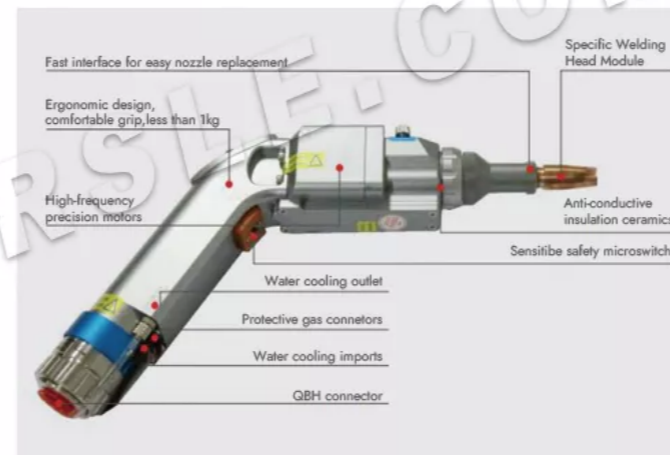
without distortion, deformation, undercut or burn-through.

- Welding of dissimilar metal parts of different thicknesses.
- Dramatically low heat input and minimized heat affected zone.
- Minimal part setup and post-processing grinding or polishing.
- Increased productivity with no need for machining or straightening deformed parts.

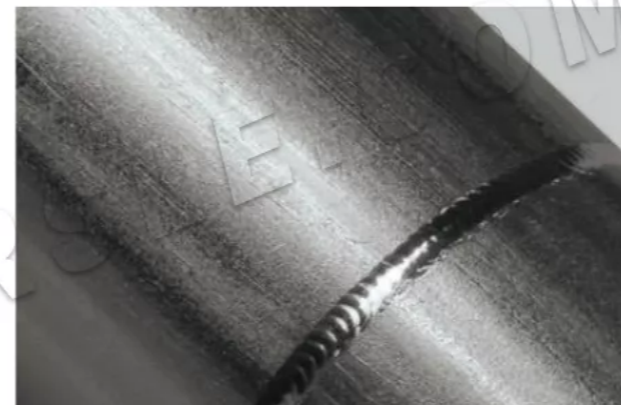
WELDING HEAD

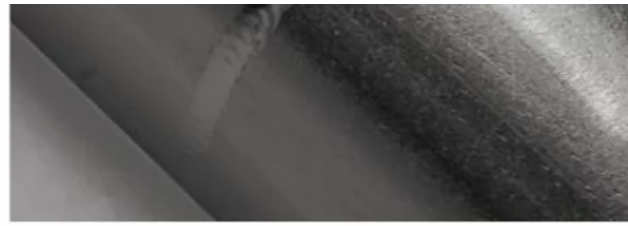
Welding heads are widely used in complex and irregular welding processes in industries such as staircase elevators, shelves, ovens, stainless steel door and window guardrails, power distribution boxes, stainless steel furniture; perfectly replace traditional argon arc welding, stainless steel plates, iron plates, aluminum plates and other metal materials welding.

- Smart internal design, good interactive control system, expand the tolerance range of the processed parts and the width of the weld seam solve the disadvantage of small light spots, the weld seam is better formed.
- Modeling light, the use of body engineering design methods, comfort grip; single-handedly easily control, operation simple and approachable.
- Having a plurality of security alarms, automatic removal of the workpiece after the light lock, be more safe.
- Weld appearance, fast, no supplies, no welding marks, no discoloration, no post-grinding.
- Can be arranged at various angles of the nozzle, to meet the different needs of the welding products.



SAMPLES





Specification

Model		HW-1000	HW-1500	HW-2000
Maximum Laser Power		1000	1500	2000
Laser Frequency	HZ	50-5000HZ	50-5000HZ	50-5000HZ
Power Adjustment Range	%	10-100	10-100	10-100
Power Instability	%	<3	<3	<3
Welding Penetration(stainless steel)	mm	2.0	2.5	3.0
Welding Penetration(carbon steel)	mm	1.5	2.5	3.0
Welding Penetration(aluminum steel)	mm	2	3	4
Swing Welding Spot	mm	Solder Spot 2-4	Solder Spot 2-4	Solder Spot 2-4
Input Voltage		220V/50HZ	380V/50HZ	380V/50HZ
Total Power	KW	≤3	≤3	≤3
Automatic Wire Feeding		Optional	Optional	Optional

Video



HARSLE Best Price 2000W Laser Welding Machine for Stainless Steel and ...



Previous: CNC Fiber Laser Cutting Machine ...

Next: W12-8X2000 4-roller Rolling Machi...

Customer Reviews

★★★★★ 5/5

Share your thoughts with other customers

0 Comment

Write a customer comment

No qualified record display

GUESS YOU LIKE

Product Inquiry



Subject

* Message

* Name

* E-mail

Company Name

WhatsApp

Upload

