



Handheld Fiber Laser Welding Machine

Easy to operate
Can be operated without any welding experience
No maintenance cost
Replace traditional welding TIG or MIG

FOB Reference Price: Get Latest Price

Laser Power: [1000 watts](#) [1500 watts](#) [2000 watts](#)

Model Number: [HS-HW1000](#) [HS-HW1500](#)
[HS-HW2000](#)

[Contact Supplier](#)



PRODUCT DESCRIPTION

[TECHNICAL PARAMETERS](#)

[VIDEO](#)

[WELD SAMPLES DISPLAY](#)

PRODUCT DESCRIPTION

rapid and flexible processing capabilities of fiber handheld laser welder
Up to 4X faster than TIG
Easy to learn and operate with highest process consistency
High quality welding of thick, thin and reflective metals without distortion, deformation, undercut or burn-through
Welding of dissimilar metal parts of different thicknesses
Dramatically low heat input and minimized heat affected zone
Minimal part setup and post-processing grinding or polishing
Increased productivity with no need for machining or straightening deformed parts.

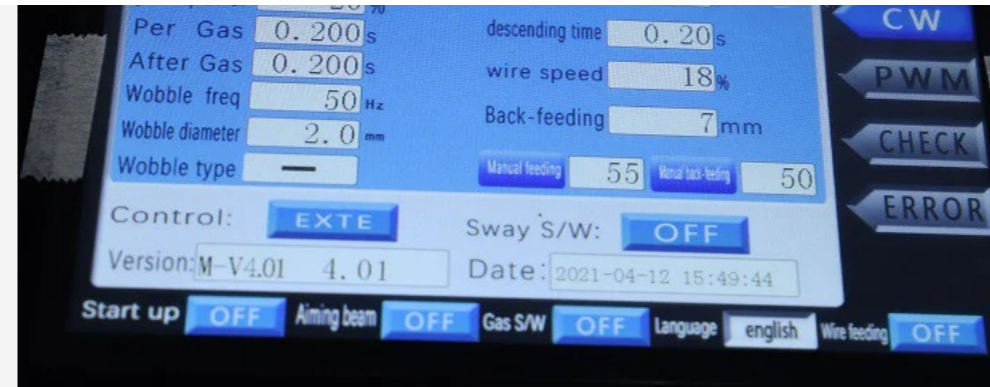


Double wobble weld head technology

It can perfectly replace some traditional argon arc welding and electric welding in the welding of thin stainless steel plate, iron plate, aluminum plate and other metal materials;
Light weight, small size, ergonomic design and comfortable grip;
The operation is easy to get started, and the requirements for operators are extremely low;
Beautiful welding seam, fast speed, no welding marks, no discoloration, no need for later polishing;
Strong anti-interference.
Double pendulum laser welding head can weld aluminum materials



The system monitors the operating status in real time, monitors and collects the operating status of the laser, chiller, and control board;
Support Chinese, English, Korean, Japanese, Russian, French, Spanish, Israeli language systems

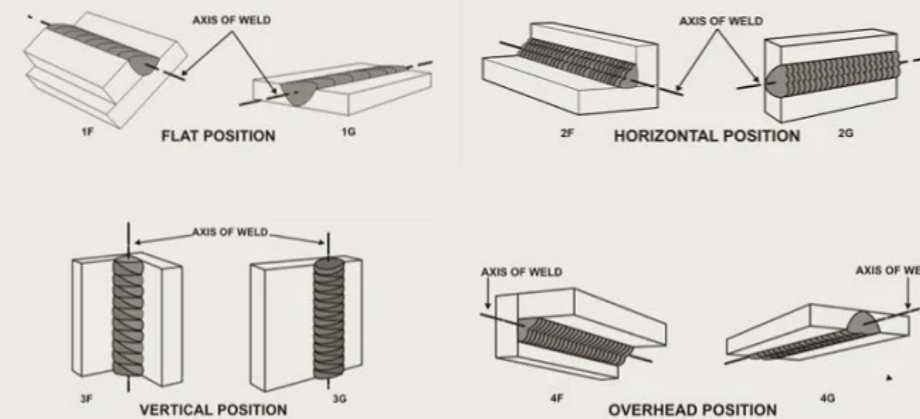


Wire Feeder

1000W and 1500W support 0.8mm 1.0mm 1.2mm wire, 2000W support 0.8mm to 1.6mm.
Wire send and back speed adjust through touch panel.
If two weld metal gap more than 0.2mm that need filler wire,

Weld method

- Flat position weld
- Horizontal position weld
- Vertical position weld
- Overhead position weld



TECHNICAL PARAMETERS



Laser power: 1000W 1500W 2000W	Type of water: Distilled water or pure water
Laser type: fiber technology	Machine color: Red / blue /black
Laser wavelength: 1080nm	Wire feeder: option part
Fiber laser source: IPG / Raycus /Max / JPT	Wire feeder diameter:0.8mm 1.0mm 1.2mm 1.6mm
Weld head: Wobble weld head	Type of gas: Argon gas
Weld width:1 - 5mm	Air pressure:3 to 5 bar / 0.3 to 0.5 Mpa
Welding head weigt:0.8kg	Power required: 1000W AC 220V ±10% 50/60Hz 1 Pha 1500W 2000W AC 380V±10% 50/60Hz 3Pha.
Control system:Hanwei brand	Total power:8kw / 9kw / 12 kw
Weld mode system:CW/ PWM / Argon Arc	Warranty period: 24 months
Weld speed: 0-120mm/s	Machine dimension: 1180x780x1460mm
Weld method:Flat / Horizontal /Vertical /Overhead	Gross Weight: 280kg
Cooling system: Water chiller	Package dimension:1200x800x1480mm
Language:English, Korean, Japanese, Russian, French, Spanish, Israeli	Consumable part Protection lens Brass nozzle



VIDEO

1500W fiber handheld laser welding machine with wire

2kw fiber handheld laser welding machine welded 12m

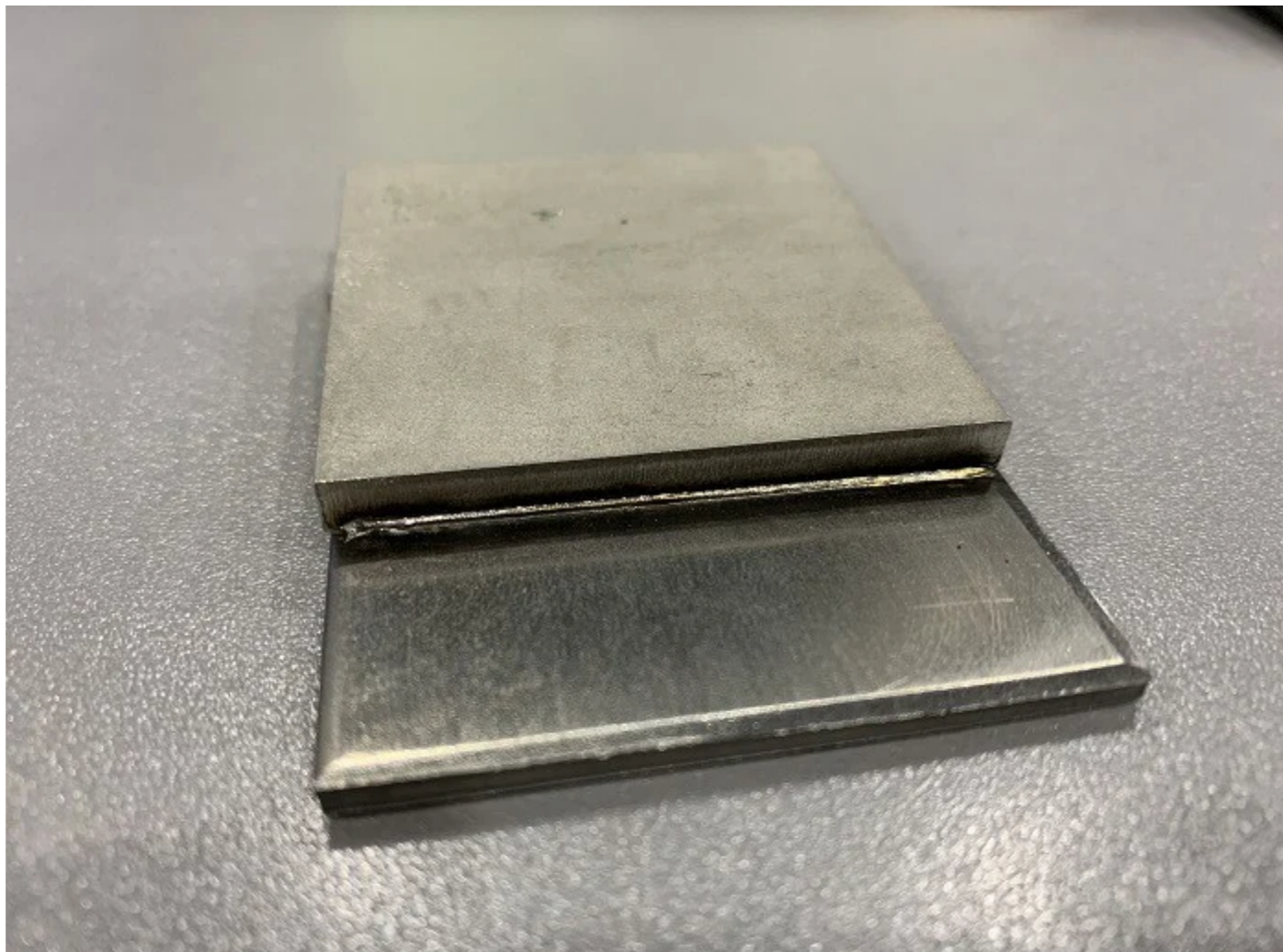
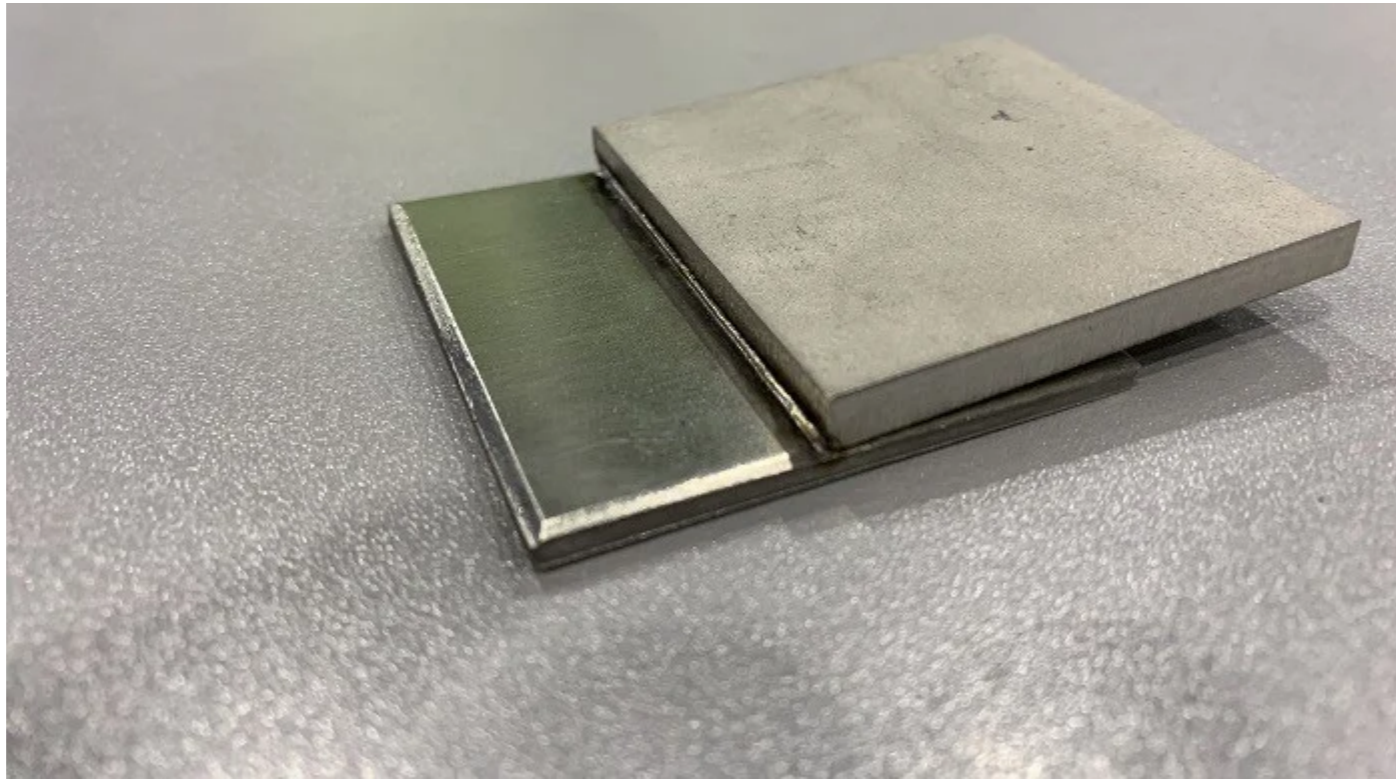


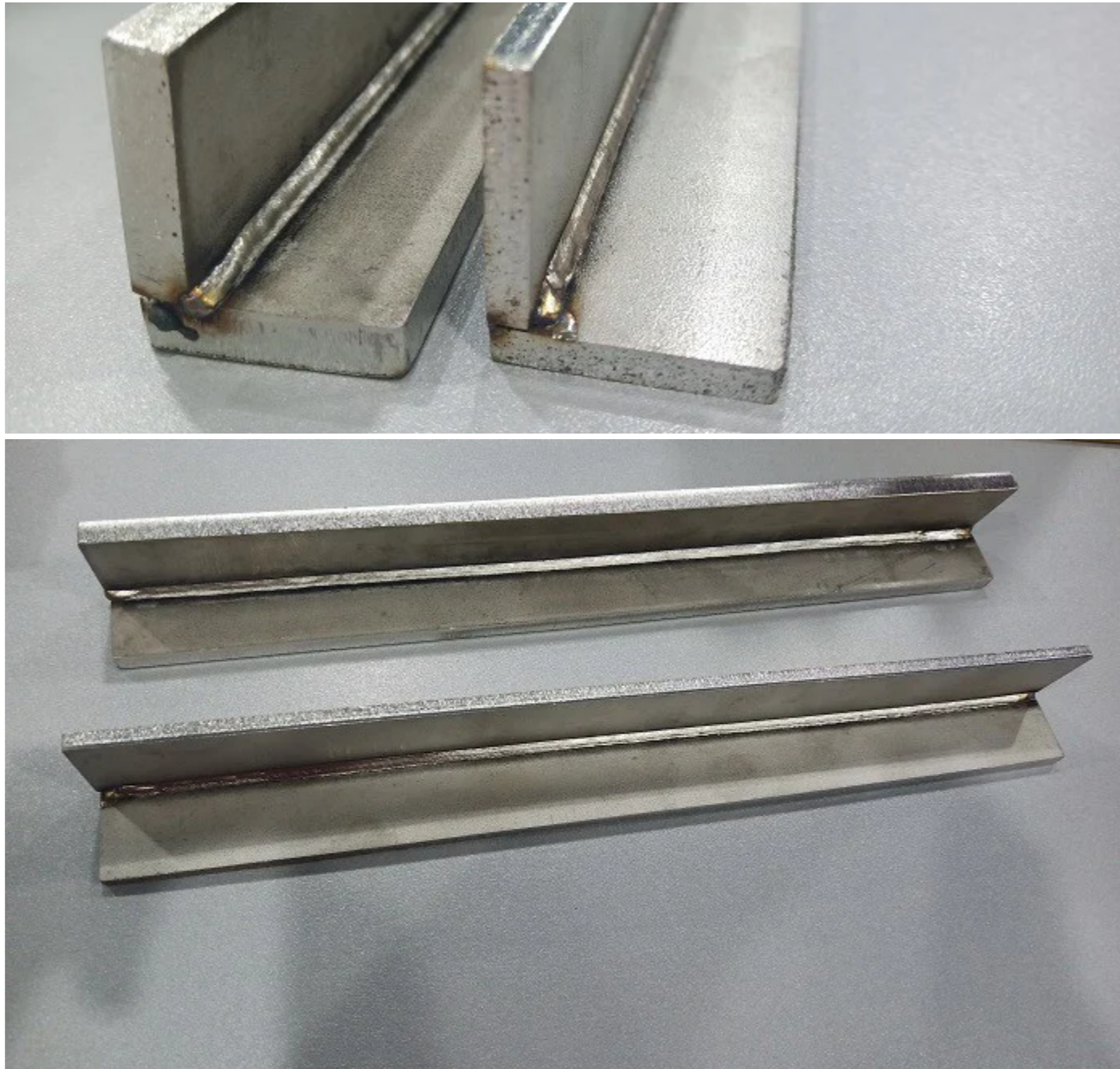
2kw fiber handheld laser welding machine welded 10m

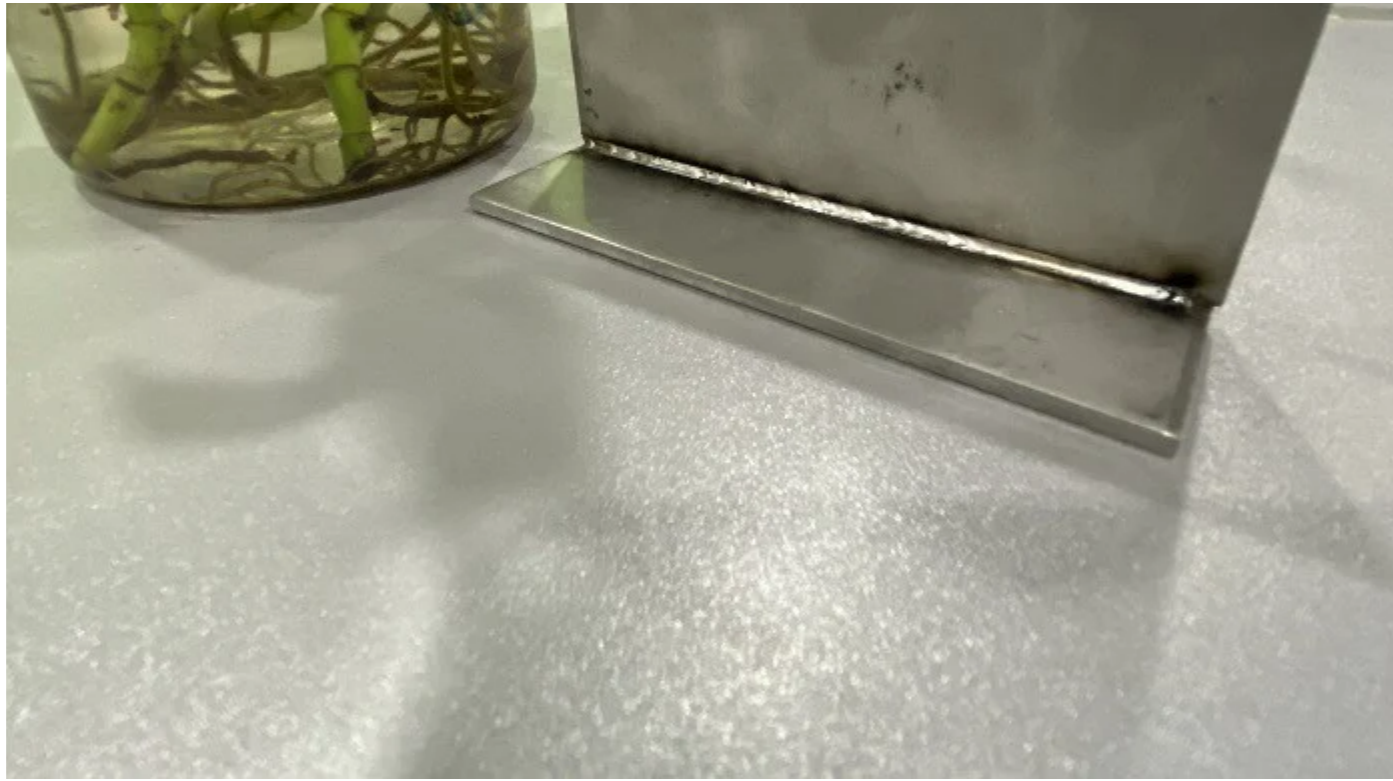


WELD SAMPLES DISPLAY







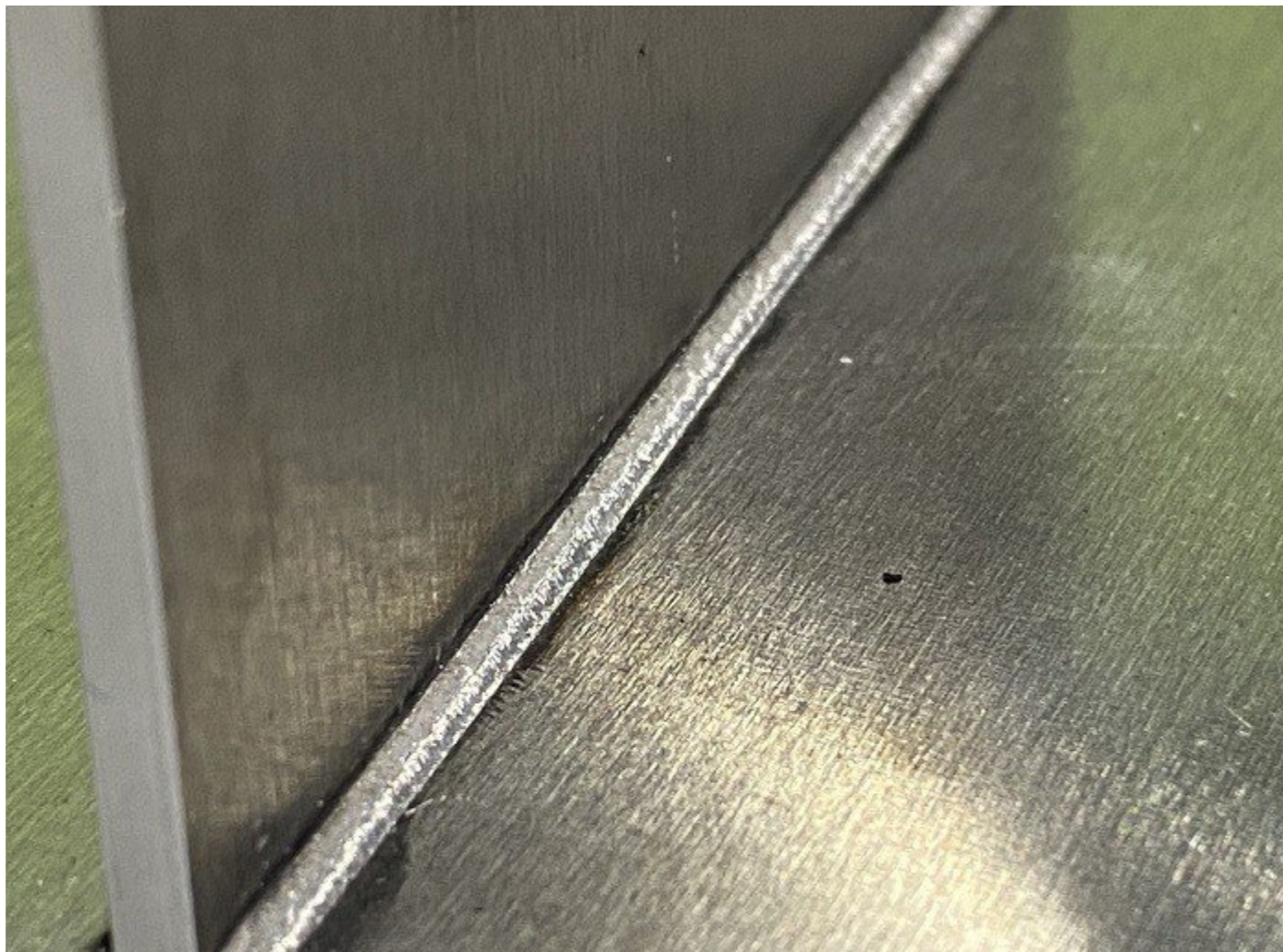
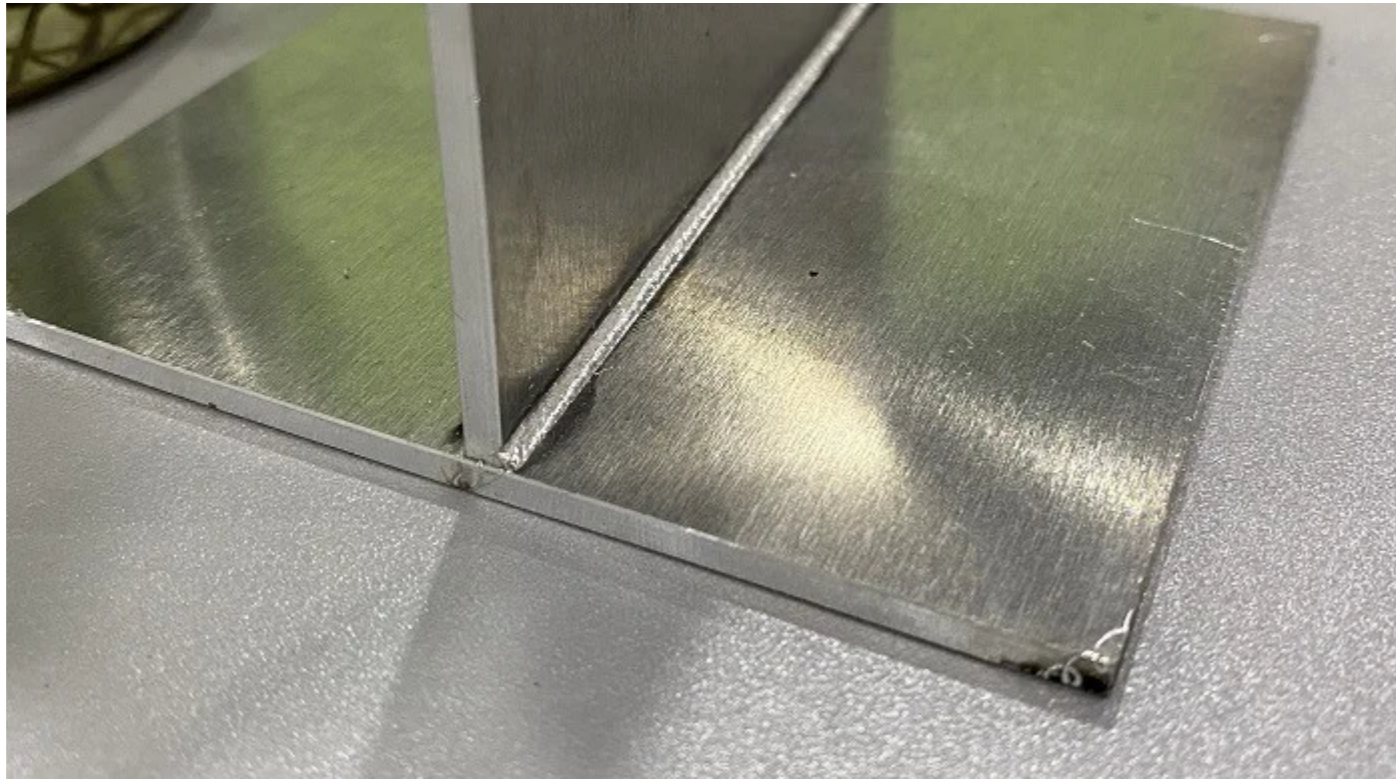




[English](#) [Español](#)

[Home](#) [Product](#) [Solution](#) [Customer Feedback](#) [News](#) [Contact us](#) [Q](#)





Send your message to this supplier

Recommend matching suppliers if this supplier doesn't contact me on Message Center within 24 hours.

*Name	Telephone
*Email	Number
*Message	

Submit



If you are interested in our products, please contact us

Contact Us

Products

- Laser Welding Machine
- Laser cleaning machine
- Laser Cutting Machine
- Laser marking machine

Contact Us

- +86 13421341274 +86 0755-2376 5340
- manager@cthslaser.com
- Yingbo office building, No.61, East ring 2nd Road, Fukang community, Longhua street,

Leave a Message

*Name
*Email

Submit

