



Datasheet

# Gemini-4E.1



## Revolutionizing *Precision Wire Stripping*

The Gemini-4E.1 redefines wire stripping by allowing the processing of a greater number of wires simultaneously.

This laser wire stripper offers an exceptional balance between affordability and performance, thanks to its robust fiber laser technology, making it ideal for tasks such as shield cutting and enamel ablation.

What sets the Gemini-4E.1 apart from conventional laser wire strippers is its utilization of high-speed double-sided galvo scanner technology. This innovative approach ensures both unparalleled accuracy and speed in directing the laser beam.

Offering users the option to strip wires according to their requirements, the Gemini-4E.1 can be easily configured for various tasks, including end-strips, window cuts, slits, or even area vaporization.

Experience the future of wire stripping with the Gemini-4E.1, where precision and performance meet affordability in perfect harmony.

### Clean and Precise

Achieve pristine, nick-free stripping with an astonishing  $\pm 0.004"$  (0.102mm) repeatability, ensuring unparalleled quality every single time. Plus, the built-in camera provides real-time monitoring of the entire process for added convenience and control.

### Versatile

With three different processing setups to choose from, you'll be able to get the visibility you prefer when processing your wires and cables.

### Compact

It's one of the most compact laser wire stripper available, with an overall footprint of just 975 x 860 x 430 mm, and offers effortless retrofitting into your existing production lines.

### Fast Processing

Achieve lightning-fast processing with a stripping speed of up to 80 inches (2000 mm) per second.

## Key Features

- Strip any pattern, including angled lines or curves to perfectly match your cable layout
- Benchtop system
- Z axis Focus control

## User Interface

- Recipe controlled
- Simple recipe backup
- Simple programming
- Multi-languages supported
- Integrated Touchscreen
- Controlled via integrated PC with Laser Wire Software
- On board diagnostics

## Suitable Materials

- Enamels,
- Polyimide,
- PEI,
- PAI
- Foils
- Micro-coax shields

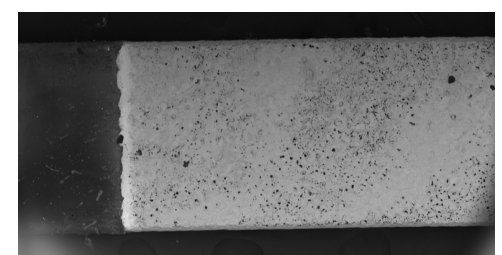
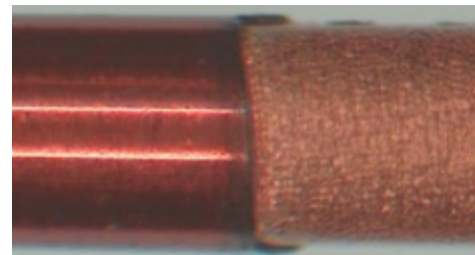
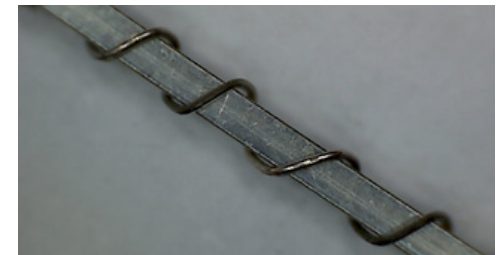
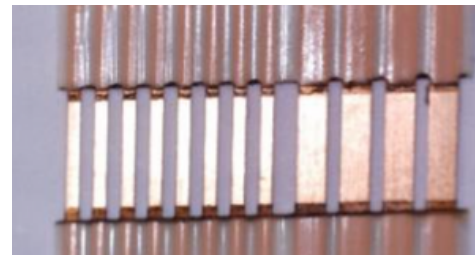
## Processing

<ul style="list-style-type: none"><li>• Processing Area</li><li>• Processing Speed</li></ul>	<ul style="list-style-type: none"><li>• 100 x 100mm</li><li>• Up to 2000mm/s (80"/s)</li></ul>
--	--

## Safety

<ul style="list-style-type: none"><li>• Overall Machine Rating</li><li>• Laser Rating</li><li>• Emergency Stop</li></ul>	<ul style="list-style-type: none"><li>• Class 1 (As per EN60825-1:2007)</li><li>• Class 4</li><li>• Yes</li></ul>
--	---

## Suitable Wires





## We Have A Global Footprint

With our partners, distributors, and customers located across Europe, North America and Mexico, our expert team is well prepared to help you find the right solution for your precision wire stripping needs.

## Get in Touch Today

+44 1443 841 738

[sales@laserwiresolutions.com](mailto:sales@laserwiresolutions.com)

[www.laserwiresolutions.com](http://www.laserwiresolutions.com)

## Gemini-4E.1

### Operating Conditions

<ul style="list-style-type: none"> <li>• Environment</li> <li>• Temperature</li> <li>• Humidity</li> </ul>	<ul style="list-style-type: none"> <li>• Light duty, industrial environment</li> <li>• 15.5 – 32°C (60 – 90°F)</li> <li>• 20 – 80%, Non-Condensing</li> </ul> <p><b><i>No compressed air needed</i></b></p>
--	---

### Electrical

<ul style="list-style-type: none"> <li>• Power</li> <li>• Power Consumption (Typical)</li> </ul>	<ul style="list-style-type: none"> <li>• 115V, 10A or 230V, 5A. Single phase supply</li> <li>• 1.5kW</li> </ul>
--	---

### Acoustic Noise

<ul style="list-style-type: none"> <li>• Machine</li> <li>• Fume Extractor (Optional)</li> </ul>	<ul style="list-style-type: none"> <li>• 69dB(A)</li> <li>• ~75dB(A)</li> </ul>
--	---

### Mechanical

<ul style="list-style-type: none"> <li>• Dimensions (LxWxH) <ul style="list-style-type: none"> <li>◦ Laser Processing Unit</li> <li>◦ Electrical Cabinet</li> </ul> </li> <li>• Umbilical Length (m)</li> <li>• Weight <ul style="list-style-type: none"> <li>◦ Laser Processing Unit</li> <li>◦ Electrical Cabinet</li> </ul> </li> </ul>	<ul style="list-style-type: none"> <li>• 860 x 430 x 975 mm</li> <li>• 540 x 250 x 730 mm</li> <li>• 3M</li> <li>• 95kg (209lbs)</li> <li>• 31kg (68lbs)</li> </ul>
--	---



#### SAFETY INFORMATION

Please read the instruction manual carefully in order to safely operate any Laser Wire Solutions products.

The information contained in this publication is based on Laser Wire Solutions' internal research and evaluation at the time of release and is subject to change without notice. Specifications are expressed in metric units. Information marked with an asterisk may be subject to change.