



Home



Blog



Store



View Cart



Developer Resources

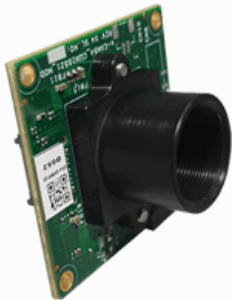
Google Custom Search



Camera Selector Camera Solutions Camera Modules USB Cameras NVIDIA Cameras Google Coral Cameras SOM Contact Online Store

Home > Camera Modules > 5MP MIPI Camera Module

e-CAM55_CUMI0521_MOD - 5MP MIPI Camera Module



e-CAM55_CUMI0521_MOD is a small form factor, 5 MP fixed focus camera module based on AR0521 CMOS image sensor from ON Semiconductor® has a dedicated, high-performance Image Signal Processor chip (ISP) on-board that performs all the Auto functions (Auto White Balance, Auto Exposure control) in addition to complete image signal processing pipeline that provides best-in-class images and video. This low light camera module can stream uncompressed VGA (640 x 480) at 75 fps, HD (1280 x 720) at 100 fps, 1280 x 960 at 75 fps, FHD (1920 x 1080) at 65 fps, 2560 x 1440 at 38fps, 2592 x 1944 at 28 fps.

 e-CAM55_CUMI0521_MOD

Documents



VOLUME PRICE START FROM

US\$39



Excluding Shipment Charges

RELATED VIDEOS



Key Features

Sensor Features

Interfacing

 Documents

Evaluation Kit

Customization

- > 5MP Colour camera with 2-lane/4-lane MIPI CSI-2 interface
- > 1/2.5" Optical Form-factor
- > Uncompressed UYVY streaming
- > S-mount interchangeable lens holder for flexibility to choose a lens as per application requirements

- › External Trigger input
- › **Maximum Image Transfer Rate** : Uncompressed UYVY Output Format

Resolutions	2-lane MIPI (NANO)
VGA (640 x 480)	75 fps
HD (1280 x 720)	100 fps
960P (1280 x 960)	75 fps
FHD (1920 x 1080)	65 fps
QHD (2560 x 1440)	38 fps
5MP (2592 x 1944)	28 fps

- › Power consumption of Camera Module Board : 1.65W (Approx)
- › Temperature Range
 - › Operation - -30° to 70° C
- › Small form-factor pluggable camera module with S-mount lens holder
- › 30mm x 30mm size
- › Board Weight: 6 Grams
- › 2x 20-pin SMT Connectors on two sides of the camera module for better mechanical stability
- › RoHS Compliant
- › **Launched on:** 11 Dec 2019

Introducing 5MP MIPI Camera for Jetson Nano



Getting started with e-CAM50_CUNANO



Low Noise Comparison e-CAM30A_CUMI0330_MOD vs e-CAM55_CUMI0521_MOD

TARGETED APPLICATIONS

- › Kiosk
- › Helper Robots
- › Biometrics
- › Parking lot management

Camera Solutions

[Camera Selector](#)

[Camera Boards](#)

[Camera Modules](#)

[USB 3.0 Cameras](#)

[USB 2.0 Cameras](#)

[Stereo Vision Camera](#)

[SerDes Camera](#)

[CX3 RDK Reference Design](#)

[Industrial Cameras](#)

Company

[Home](#)

[About Us](#)

[Contact us](#)

[Locations](#)

[Our Partners](#)

[Testimonials](#)

[Careers](#)

[Privacy Policy](#)

[Terms and Conditions](#)

Resources

[Online Store](#)

[Blog](#)

[Articles](#)

[News](#)

[Events](#)

[Videos](#)

[Press Releases](#)

Get Latest Update

Want to be the first to hear about our Product updates, new firmware/software releases and product change notifications? Join our mailing list

Social



Copyright © 2020 [e-con Systems](#) | [Site Map](#)