



Home



Blog



Store



View Cart



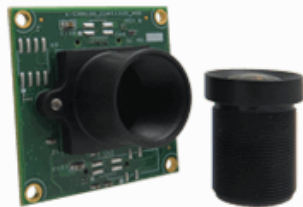
Developer Resources



 Camera Selector
 [Camera Solutions](#)
[Camera Modules](#)
[USB Cameras](#)
[NVIDIA Cameras](#)
[Google Coral Cameras](#)
[SOM](#)
[Contact](#)
 Online Store

Home > [Camera Modules](#) > 13MP 4K Camera Module

e-CAM131_CUMI1335_MOD – 13MP 4K Camera Module



e-CAM131_CUMI1335_MOD is a high performance, 13 MP 4K camera module with S-Mount lens holder and it has better low light performance. This small form factor 4K camera module is based on 1/3.2" AR1335 CMOS image sensor from ON Semiconductor® and has a dedicated, high-performance Image Signal Processor (ISP) that performs the entire Auto functions like auto white balance, auto exposure control in addition to complete image signal processing pipeline that provides best-in-class images and video and the optional MJPEG compression.

e-CAM131_CUMI1335_MOD

Documents



VOLUME PRICE STARTS FROM

US\$69



Excluding Shipment Charges



RELATED VIDEOS



Key Features

Sensor Features

Interfacing

 Documents

Evaluation Kit

Customization

- > 13MP Colour camera with 4-lane MIPI CSI-2 interface
- > 1/3.2" Optical Form-factor
- > Uncompressed UYVY streaming & Compressed MJPEG streaming
- > S-mount interchangeable lens holder for flexibility to choose a lens as per application requirements
- > External Trigger input

- › Face detection capability
- › **Maximum Image Transfer Rate** : Uncompressed UYVY Output Format

Resolutions	USB 3 Interface For PC solution	4-lane MIPI (TX2/TX1)
VGA	120 fps	120 fps
HD (720p)	60 fps	80 fps
Full HD (1080p)	60 fps	80 fps
4K Ultra HD (3840x2160)	15 fps	30 fps
4K Cinema (4096 x 2160)	15 fps	30 fps
13MP (4208 x 3120)	9 fps	20 fps

- › Power consumption of Camera Module Board : 1.10W (Approx)
- › Temperature Range
 - › Operation - -30° to 70° C
 - › Stable Image - 0° to 50° C
- › Small form-factor pluggable camera module with S-mount lens holder
- › 30mm x 30mm size
- › Board Weight: 6 Grams
- › 2x 20-pin SMT Connectors on two sides of the camera module for better mechanical stability
- › RoHS Compliant
- › **Launched on: 31 May 2017**



[Getting Started with See3CAM_CU135](#)

RELATED PRODUCTS

- » 13.0 MP AR1820HS MIPI
- » 5.0 MP OV5640
- » 5.0 MP MT9P031 Monochrome
- » 4.0 MP OV4682 RGB-IR
- » 3.4 MP AR0330 Low Light
- » 2.0 MP Sony IMX290
- » 2.0 MP AR0230AT HDR
- » 1.0 MP AR0130CS NIR

Camera Solutions

[Camera Selector](#)

[Camera Boards](#)

[Camera Modules](#)

[USB 3.0 Cameras](#)

[USB 2.0 Cameras](#)

[Stereo Vision Camera](#)

[SerDes Camera](#)

[CX3 RDK Reference Design](#)

[Industrial Cameras](#)

Company

[Home](#)

[About Us](#)

[Contact us](#)

[Locations](#)

[Our Partners](#)

[Testimonials](#)

[Careers](#)

[Privacy Policy](#)

[Terms and Conditions](#)

Resources

[Online Store](#)

[Blog](#)

[Articles](#)

[News](#)

[Events](#)

[Videos](#)

[Press Releases](#)

Get Latest Update

Want to be the first to hear about our Product updates, new firmware/software releases and product change notifications? Join our mailing list

Social



Copyright © 2020 [e-con Systems](#) | [Site Map](#)