



[Home](#) > [Laser Processing Equipment](#) > [Laser Welding Machine](#)



## DF-WM200C Cantilever-type Large Mould Laser Welding Machine

**Model:** DF-WM200C  
**Applicable Materials:** Various high-precision injection molds, precision plastic mold parts etc.  
**Laser Power:** 200W 300W 400W  
**Laser Type:** YAG Pulse  
**Lead Time:** 3-5 days against deposit payment  
**After Service:** 24/7 Online Support & Overseas Engineers Available

GET A FREE QUOTE

### DESCRIPTION | PARAMETER

#### DF-WM200C Cantilever-type Large Mould Laser Welding Machine

The *cantilever-type large mould laser welding machine* produced by DEFY Laser can solve the problem of large-scale automobile mold repair. No mold movement is required. The boom laser head joystick controls the movement to achieve easy laser repair of large molds.

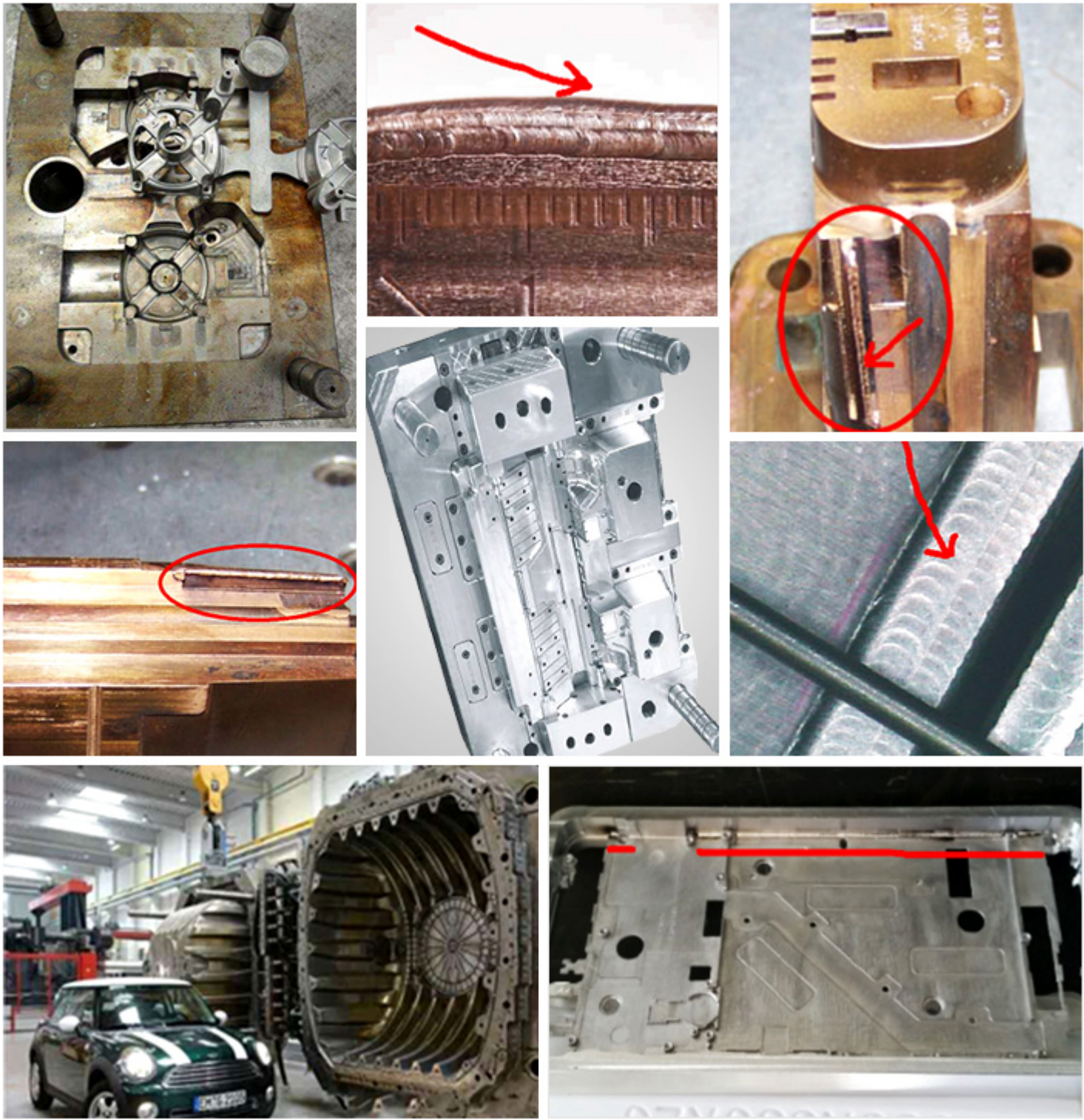
##### Applicable materials and scope

The large *mold welding machine* is widely used in laser repair welding of various high-precision injection molds, laser repair of precision plastic mold parts, and laser welding of beryllium copper parts of plastic molds; laser repair of wear and tear during mold use; machining errors, EDM machining Mistakes, mold reduction design changes, etc. require mold modification, which plays a key role and can make up for the huge losses caused by processing errors.





## APPLICATIONS



### Advantages

- ◆Imported ceramic cavity, high temperature resistance
- ◆Small heat-affected area, not easy to produce mold deformation
- ◆Large welding depth, which is firm and beautiful
- ◆Full melting, leaving no traces of repair, good welding effect, high strength and fast speed
- ◆Suitable for: repair welding of large molds, product breakage, crack repair welding, circumferential welding, butt welding, etc...

### Details

1. Metal condenser cavity, high conversion efficiency, no cleaning  
The reflective surface of the reflector is glaze, which is not easy to oxidize in contact with water, which can reduce the cost of equipment downtime and the repair cost of the condenser cavity
2. Imported metal laser cavity, long life  
The design of the metal optical cavity and the full-cavity water-cooling structure extends the life of the xenon lamp as much as possible by 8 million times
3. Positioning panel



Humanized control panel, simple and convenient buttons, brand new design, one-key operation

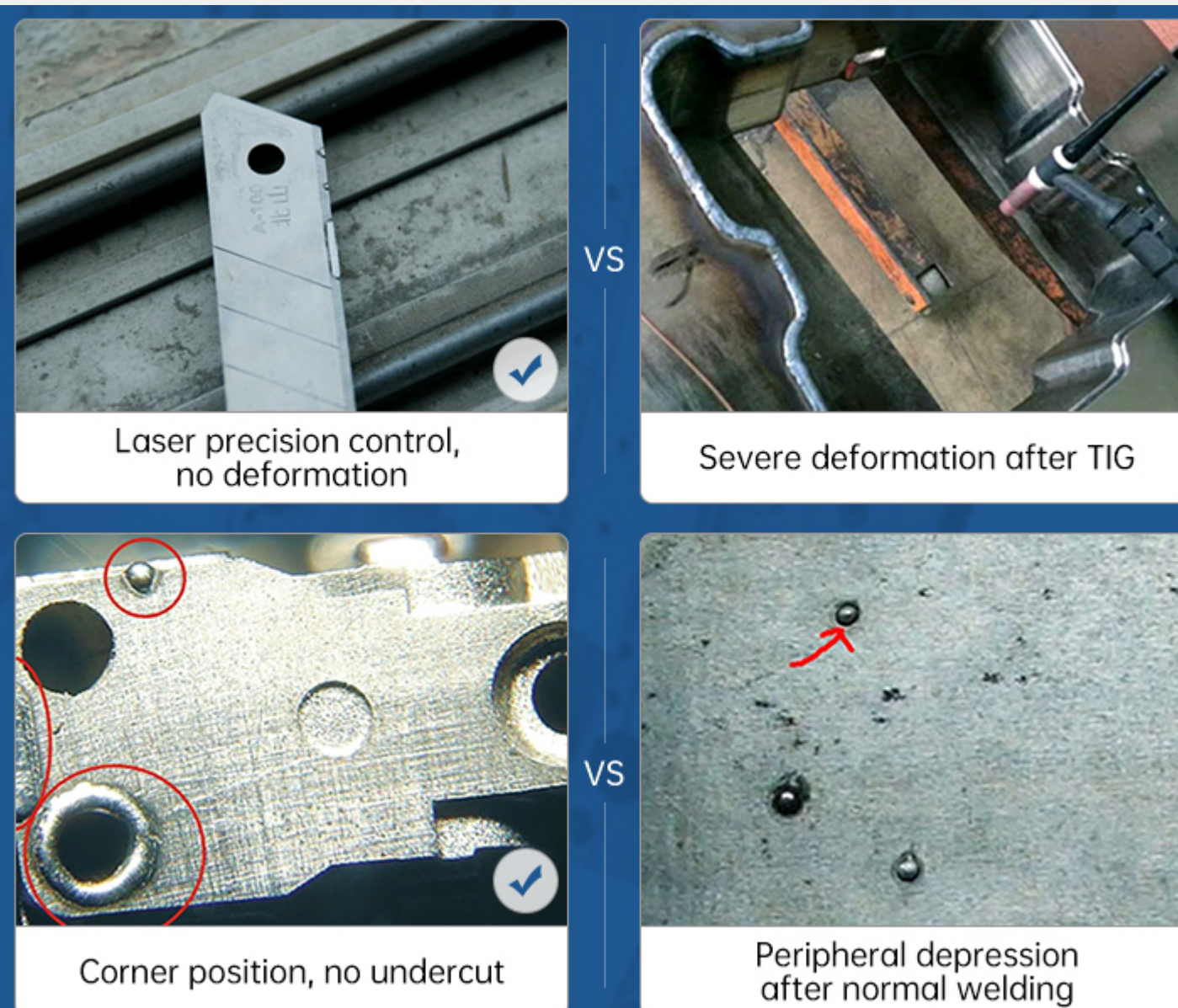
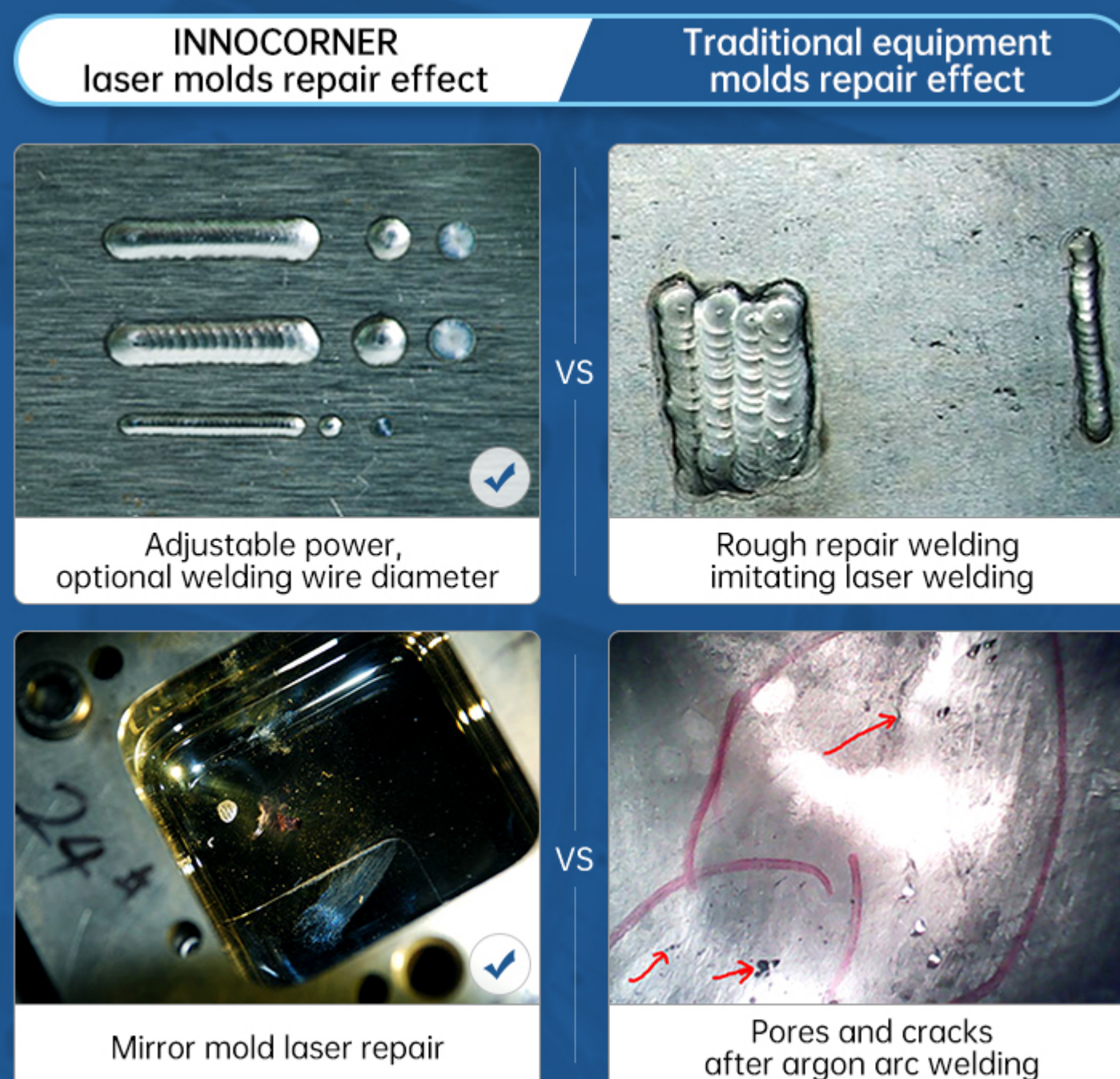
The diagram compares two welding processes: Laser Welding and TIG welding. A central 'VS' icon separates the two.

**Laser Welding:**

- Components: Pulse laser, Patching material welding material ( $\Phi 0.1 \sim 0.5 \text{ mm}$ ), Argon, Workpiece.
- Process: The pulse laser and argon are directed at the workpiece, with patching material being applied.
- Result: A Repair layer is formed. The outcome is 'No deformation, no undercut, high-precision repair work'.

**TIG welding:**

- Components: Patching material welding rod ( $\Phi 1.0 \sim 4.8 \text{ mm}$ ), Welding head nozzle, Tungsten electrode, Furnace hearth, Workpiece, Infiltration.
- Process: The tungsten electrode and welding rod are used in the presence of a furnace hearth and infiltration material.
- Result: A Repair layer is formed, but it is associated with 'Undercut' and 'Deformed Infiltration layer'.

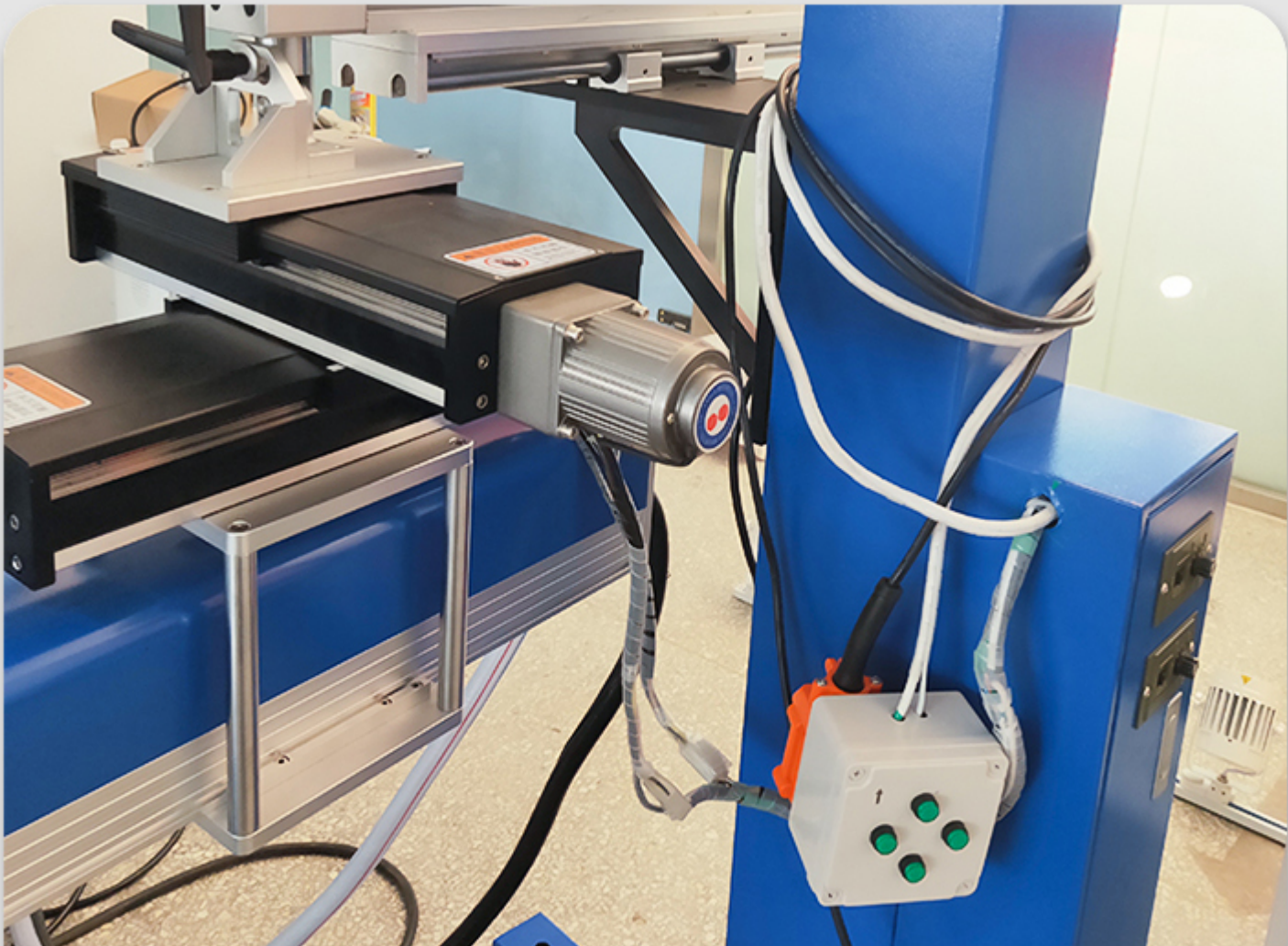




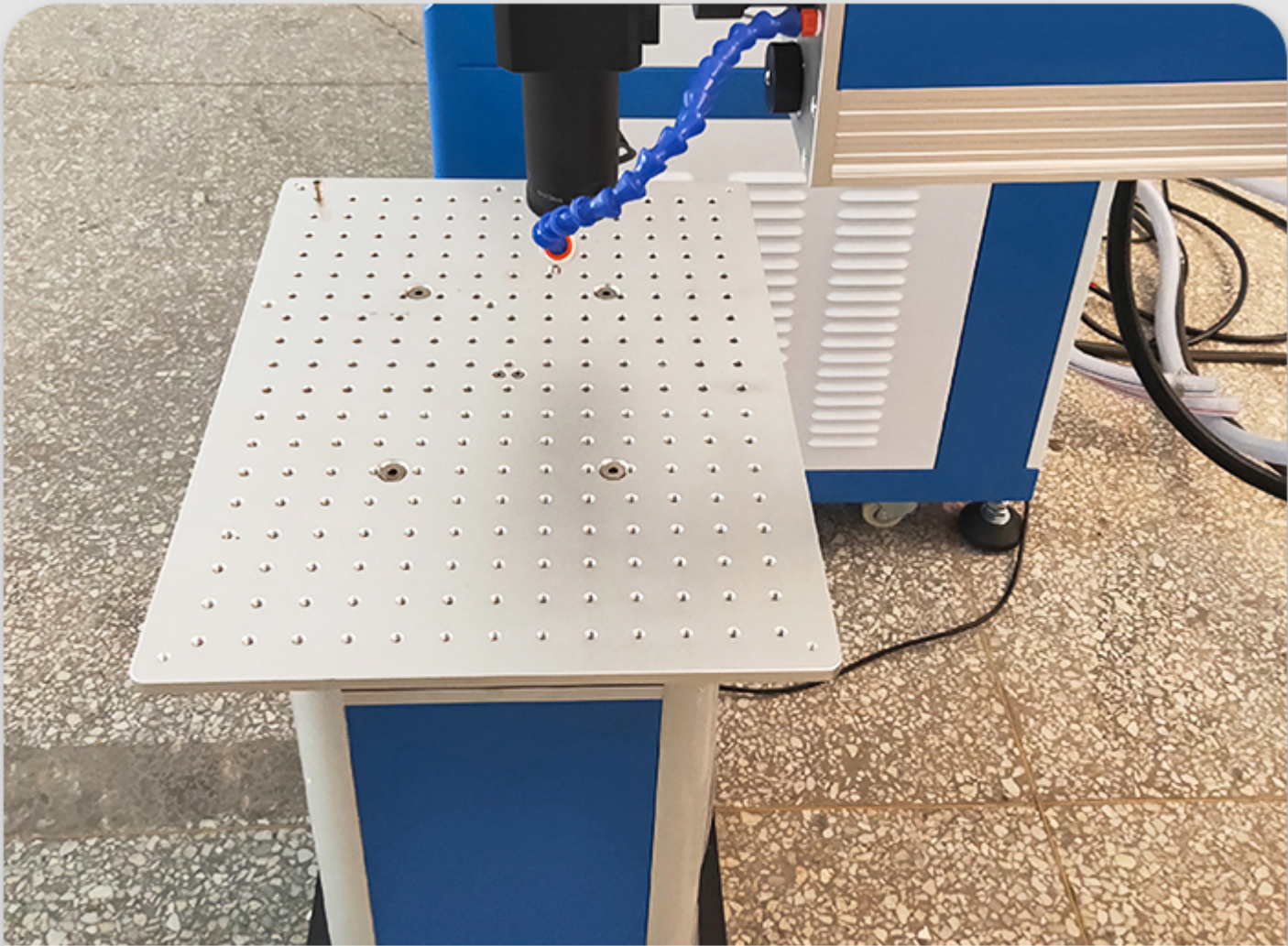
DETAILS



Metal condenser cavity,  
high conversion efficiency, no cleaning



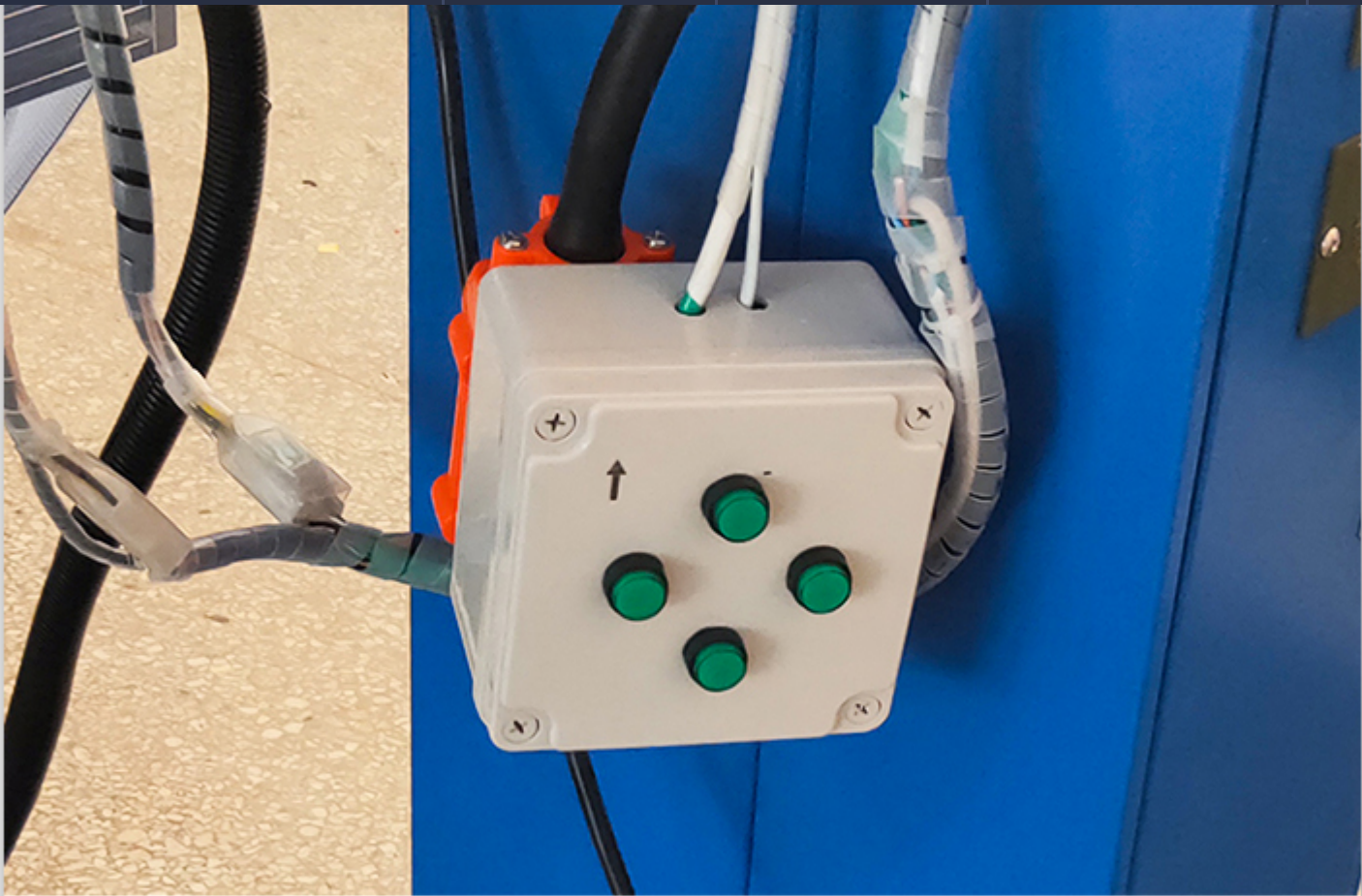
Imported metal laser cavity, long life



Positioning panel







Operation buttons



PARAMETER

Molds Laser Welders			
Model	DF-WM200C	DF-WM300C	DF-WM400C
Output Laser Power	200W	300W	400W
Laser Medium	Nd: YAG pulse		
Loading Weight of Table	≤200KG		
Worktable Travel	X=300mm,Y=200mm (X, Y can be adjusted manually, Z axis electric lift)		
Light Spot Range	0.2-3.0mm		
Width of Pulse	0.5 -25ms		
Cooling Way	Water		
Protection Gas	Argon		
Working Conditions	Temperature: -10°C - 45°C, humidity: 5% - 75%, free of dust and well ventilated		

Get the Best Quote!

Please feel free to contact us for any inquiries, we will get back to you shortly.

\* FULL NAME

\* name

\* EMAIL

\* email

PHONE NUMBER

\* phone number

\* MESSAGE

\* messages

Send Inquiry

Featured products



Handheld Fiber Laser Welder  
with Precision Auto Cutting  
Function



DF-W300D Handheld Fiber  
Channel Letter Laser Welding  
Machine



DF-W300 Fiber Transmission  
Channel Letter Laser Welding  
Machine

