



[Home](#) > [Laser Processing Equipment](#) > [Laser Welding Machine](#)



DF-WM200 Desktop Type Laser Welder for Molds Repairing

Model: DF-WM200
Applicable Materials: Cold-worked high-alloy steel, hot-forged high-alloy steel etc.
Laser Power: 200W 300W 400W
Laser Type: YAG Pulse
Lead Time: 3-5 days against deposit payment
After Service: 24/7 Online Support & Overseas Engineers Available

GET A FREE QUOTE

DESCRIPTION | PARAMETER

DF-WM200 Desktop Type Laser Welder for Molds Repairing

The working principle of the **mould laser welding machine** is based on the laser high heat energy and concentrated fixed-point welding technology, which effectively handles all the welding and repair work of small parts, and makes up for the shortcomings of the traditional argon arc welding technology in repairing the fine surface of the welding. The two thresholds of thermal strain and post-processing are avoided, and the production cycle of the mould is greatly saved.

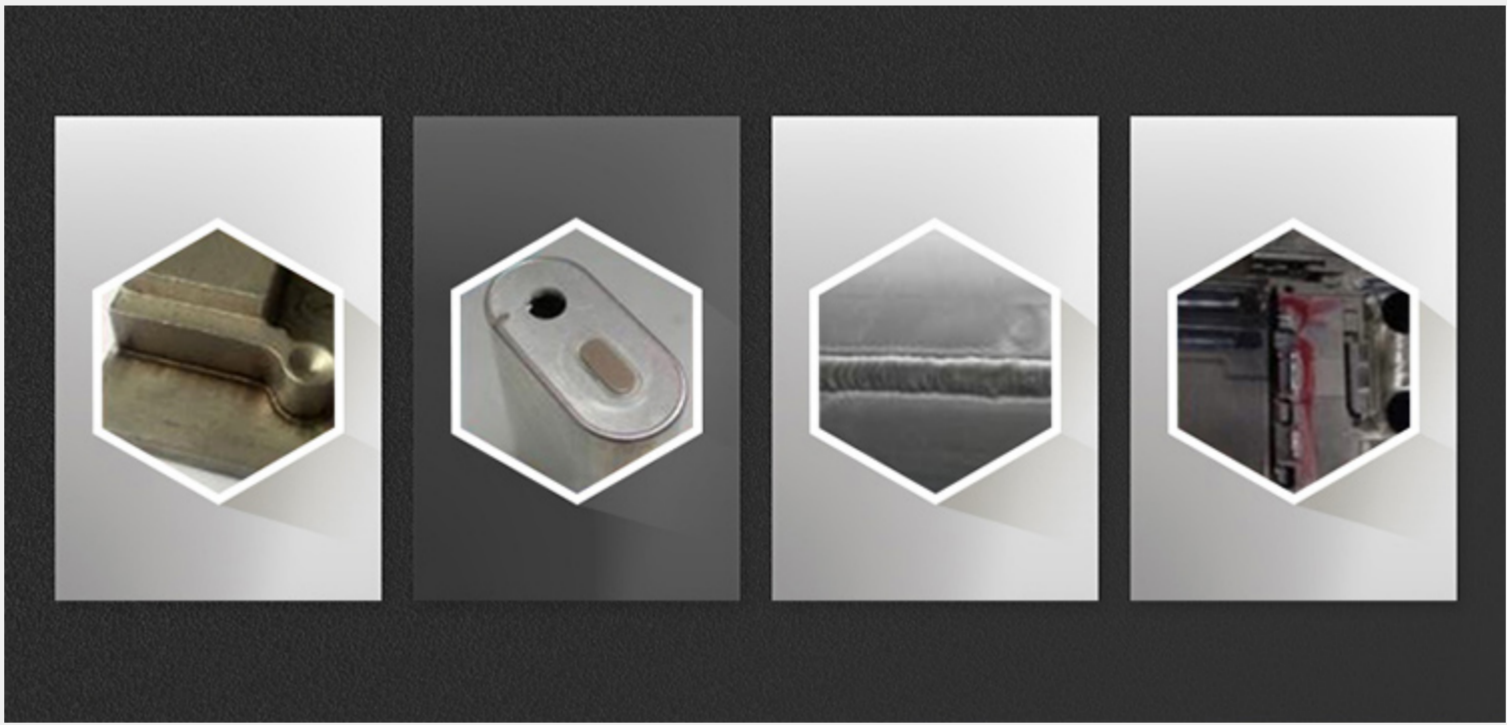
Applicable materials

The precision **laser mold welding machine** can weld a wide range of materials, including: cold-worked high-alloy steel, hot-forged high-alloy steel, nickel-containing tool steel, high-grade steel, copper alloy, beryllium copper, high-toughness aluminum alloy and other metal materials

Characteristics

1. HD microscope
2. Imported ceramic concentrating cavity is adopted
High reflectivity, strong energy, high temperature resistance, corrosion resistance, cavity life (8-10) years, xenon lamp life more than 8 million times;
Remarks: 400W with double lamp condenser
3. Equipped with 1.5P special chiller
It can meet the long-term, high-power welding stability;
Remarks: 400W with 3P chiller
4. Equipped with a three-dimensional load-bearing workbench, electric lifting of the base
The worktable is moved using precision ball screws and high-precision straight guides, which are light and flexible, with precise positioning and a load-bearing capacity of up to 200 kg;

- 5. The laser head can be slid back and forth, manually raised and lowered, the laser head can be easily rotated 180 degrees
Convenient for repair welding on any side, especially suitable for repairing various large, medium and small molds;
- 6. Equipped with gas protection system,
Effectively protect the product from argon protection during the welding process, and maintain the original color of the product to ensure the welding quality.
- 7. The operation is simple and fast.

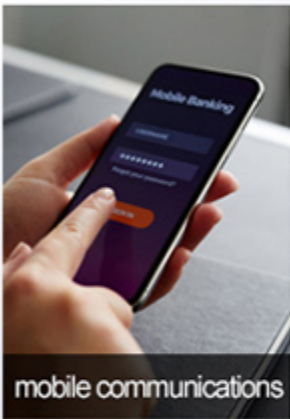


APPLICATION RANGE

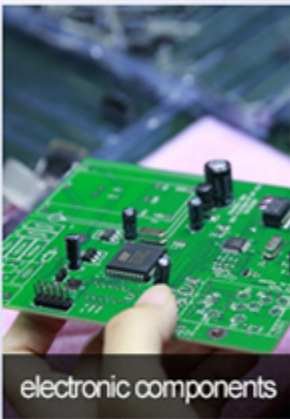
mobile phone communications, jewelry crafts, electronic components, watches, sensors, precision machinery, hardware, gas car parts, etc., various metals and alloys.



jewelry crafts



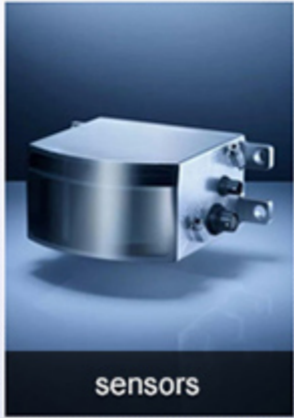
mobile communications



electronic components



watches



sensors



precision machinery



hardware



gas car parts



CHARACTERISTICS



HD microscope



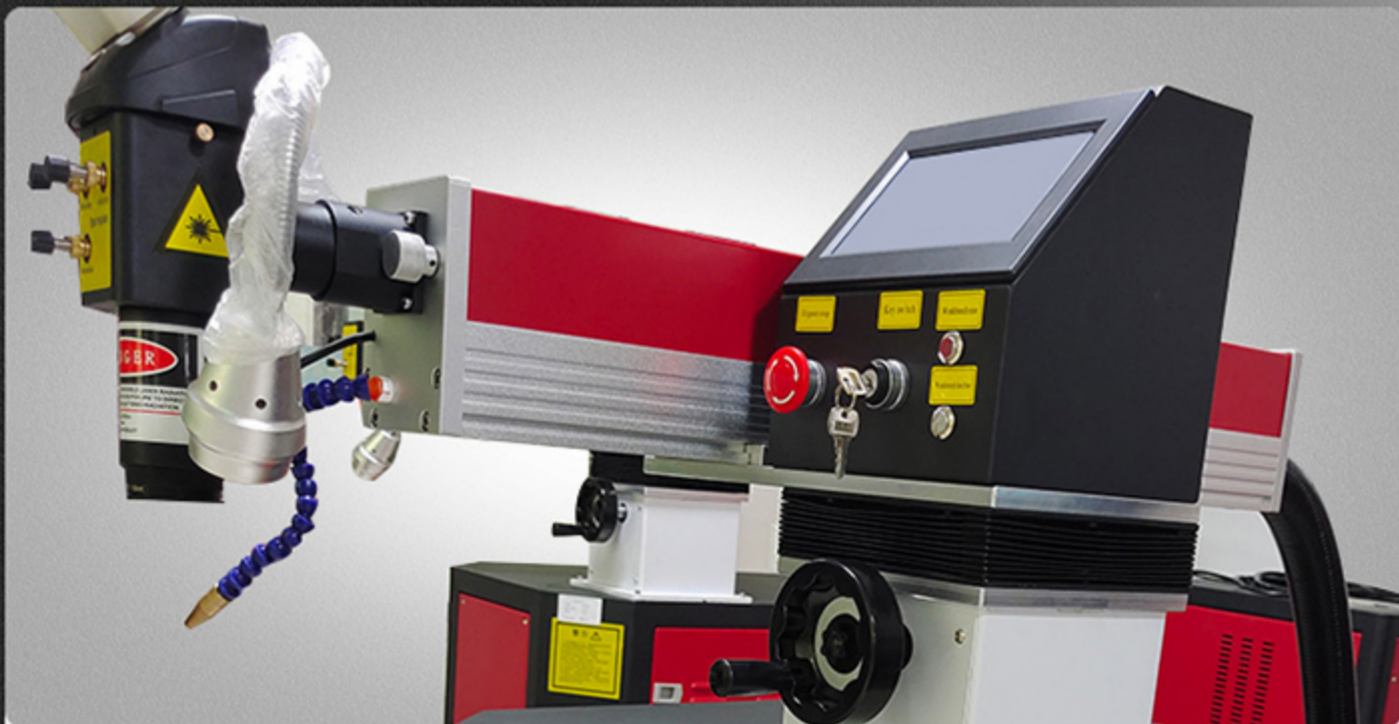
Imported ceramic concentrating cavity is adopted



Equipped with 1.5P special chiller
(400W with 3P water chiller)



Equipped with a three-dimensional load-bearing workbench
electric lifting of the base



The laser head can be slid back and forth,
manually raised and lowered, the laser head can be easily rotated 180 degrees



Equipped with gas protection system and foot pedal



The operation is simple and fast

PARAMETER

Model	DF-WM200	DF-WM300	DF-WM400
Output Laser Power	200W	300W	400W
Laser Medium	Nd: YAG pulse		
Loading Weight of Table	≤200KG		
Worktable Travel	X=300mm,Y=200mm (X, Y can be adjusted manually, Z axis electric lift)		
Light Spot Range	0.2-3.0mm		
Width of Pulse	0.5 -25ms		
Cooling Way	Water		
Protection Gas	Argon		
Working Conditions	Temperature: -10°C - 45°C, humidity: 5% - 75%, free of dust and well ventilated		

Get the Best Quote!

Please feel free to contact us for any inquiries, we will get back to you shortly.

* FULL NAME

* name

* EMAIL

* email

PHONE NUMBER

* phone number

* MESSAGE

* messages

Send Inquiry

Featured products



Handheld Fiber Laser Welder
with Precision Auto Cutting
Function

DF-W300D Handheld Fiber
Channel Letter Laser Welding
Machine

DF-W300 Fiber Transmission
Channel Letter Laser Welding
Machine



Product Category

3D Printer

Laser Processing Equipment

Epidemic Prevention Products

Contacts

 No.96, Ruida Road, High-Tech Zone,
Zhengzhou, Henan, China

 (+86) 18848968295

 manager@dflylaser.com

