



Engraving and Cutting Solutions for Your Business



About AlgoLaser

Shenzhen Algo Technologies Co., Ltd. is an innovative tech company focusing on laser engraving machines for commercial use, founded by Justin Tan, a famous expert of the laser engraver industry. Dedicated to offer innovative laser engraving machine solutions for users, Justin established a powerful and professional team to continue his pioneering work in the industry.

Right now Algo has 2 sites located at Shenzhen and Changsha in China. Shenzhen serves as our research and development as well as production base, while we have a marketing center in Changsha. Our company boasts an autonomous research and development team and production facility, alongside seasoned sales and marketing teams. We're focused on catering to our users' distinct needs while delivering excellent services. Our objective is to enable small businesses and individuals to supplement their income with the help of our professional laser engraving machines.



200+
Professional Team

100,000+
Annual Shipment

5,000+m²
R&D and Production Base



Engraving and Cutting Solutions for Your Business

Vision

Become the evangelist and leader in the commercial laser equipment industry.

Mission

We are committed to discover the commercial use of laser machines users and develop laser application technologies for practical use, so we can offer exceptional laser solutions and services that continuously create value for users' businesses.

Value

Empowering Clients 、Empathy 、Enterprising 、Seek truth

Laser engraving machine application field



Coffee Shop



Stationery



Winery



bar



Hotel



Jewelry



School



Lovers



Wedding



Graphic



Our Advantages

Superior Quality

Algo products are known for their high-quality craftsmanship, durability, and reliability. We ensure that our products meet the highest standards to deliver exceptional performance.

Cutting-Edge Technology

Algo stays at the forefront of technological advancements, continuously innovating and integrating the latest features and functionalities into our products. This ensures that our customers benefit from the most advanced and efficient solutions.

Customization Options

Algo understands that every customer has unique requirements. We provide a range of customization options, allowing our customers to tailor our products to their specific needs. This level of flexibility ensures that you get a solution that perfectly fits your business.

one-stop

We pride ourselves on providing excellent customer support. From pre-sales consultations to after-sales service, our dedicated team is always available to assist you. We strive to ensure your satisfaction and success with our products.



Delta

The World's First All-in-one Touch Screen Laser Engraver

Vision

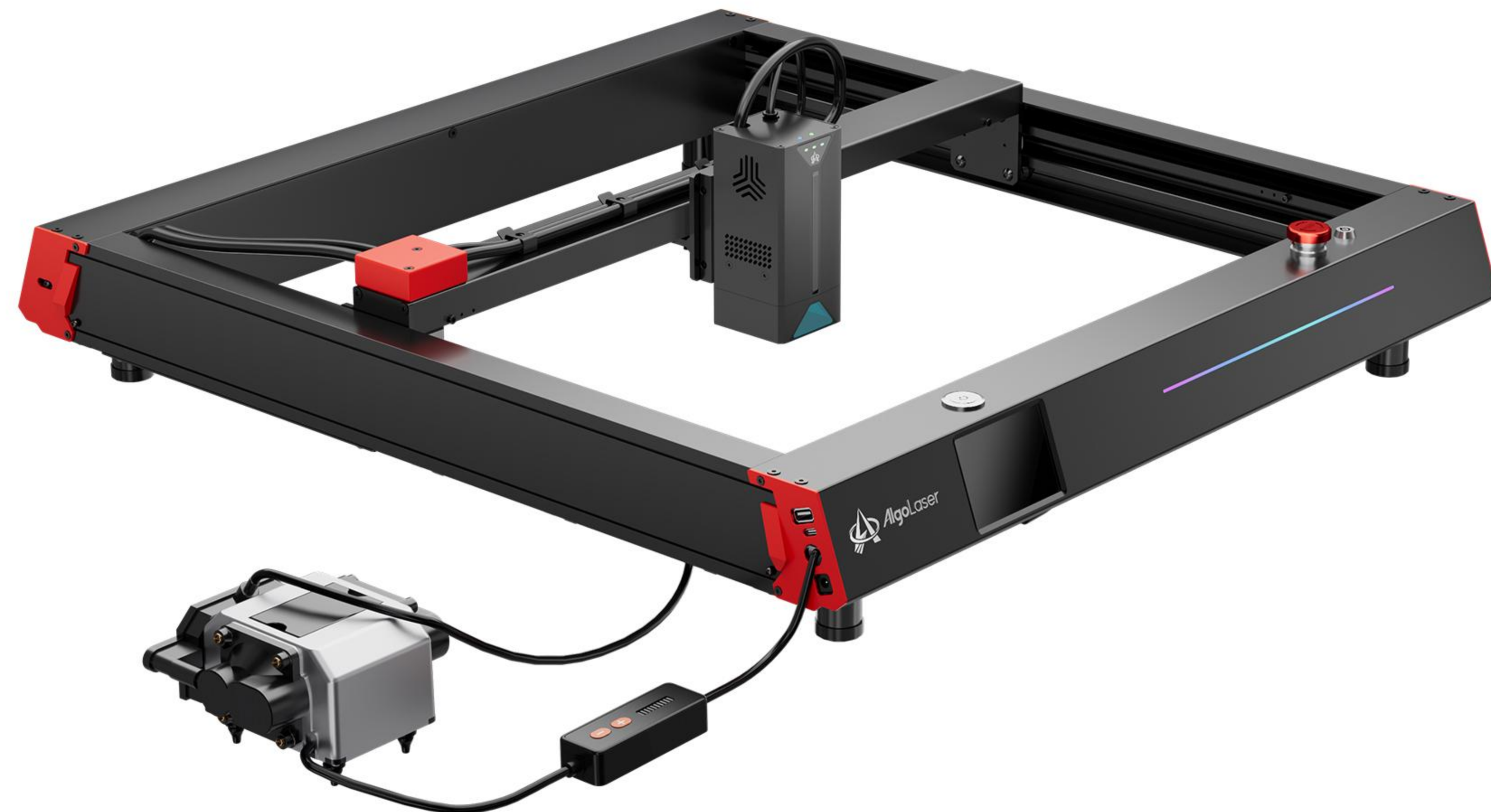
Become the evangelist and leader in the commercial laser equipment industry.

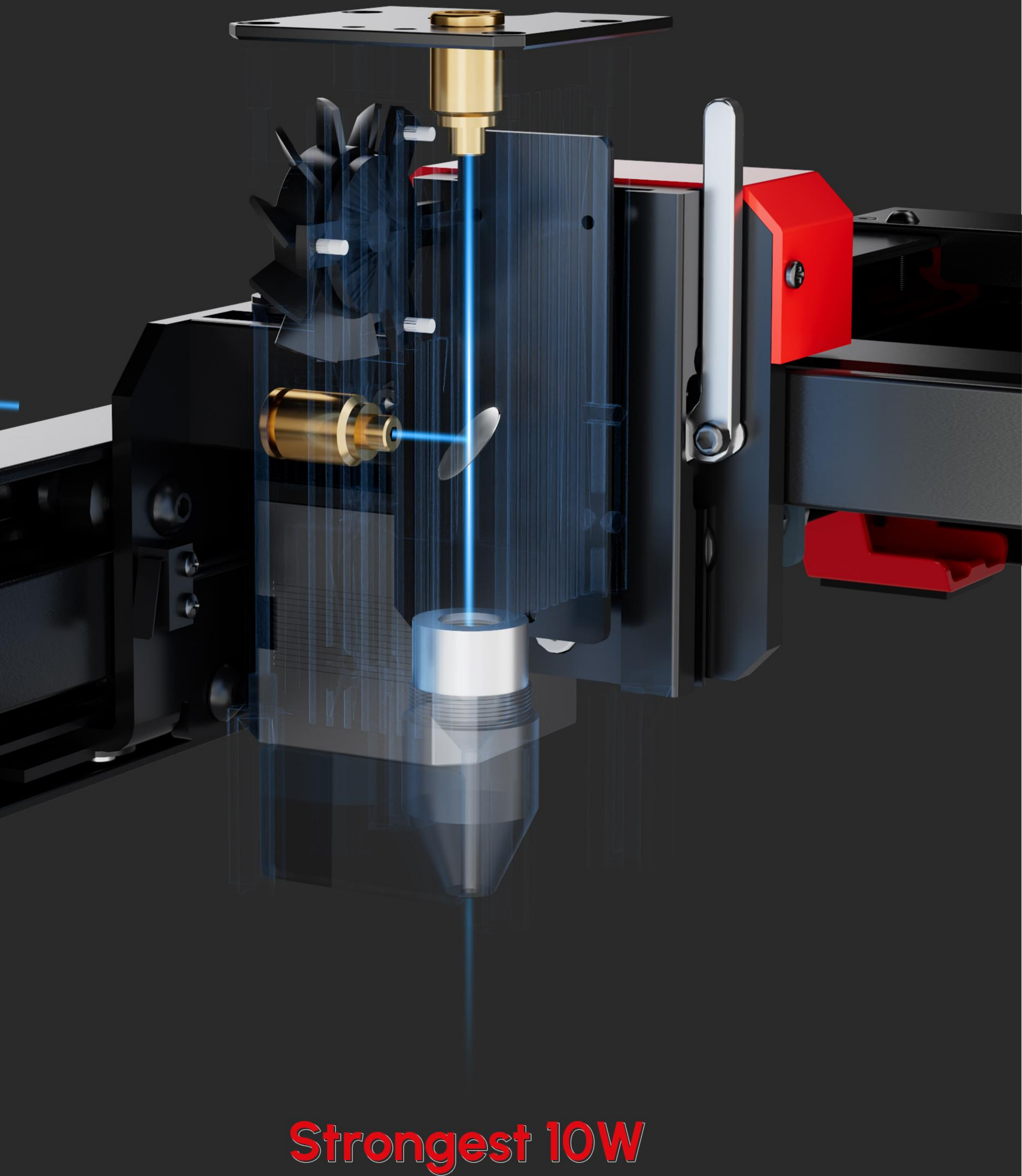
Mission

We are committed to discover the commercial use of laser machines users and develop laser application technologies for practical use, so we can offer exceptional laser solutions and services that continuously create value for users' businesses.

Value

Empowering Clients、Empathy、Enterprising、Seek truth





Strongest 10W

Aphla

More Durable Laser Engraver: Superb 7*24h Long-Term Working Stability

Vision

Become the evangelist and leader in the commercial laser equipment industry.

Mission

We are committed to discover the commercial use of laser machines users and develop laser application technologies for practical use, so we can offer exceptional laser solutions and services that continuously create value for users' businesses.

Value

Empowering Clients 、Empathy 、Enterprising 、Seek truth





Technical Specification

Models	Alpha	Delta
Laser System		
Machine power	96W	180W
Laser module output power	10W	20W
Laser spot	80*100um	140*160um
Wavelength	455±5nm	455±5nm
Speed	30000mm/min	50000mm/min
Working Area		
Working Area	410*410mm	440*415mm
Size and Weight		
Product gross weight	6.5kg	8.5kg
Product size	X585*Y674*Z140mm	X660*Y730*Z175mm
Miscellaneous		
Voltage input	110~220VAC/50HZ~60HZ	
Voltage output	24V 4A	24V 8A
Connecting interfaces	USB-C Bluetooth Wifi-5G	
Software Requirements		
Operating systems	Android&iOS Windows&MacOS	
Control software	Lightburn/ LaserGRBL	
File types	jpg, svg, png, bmp, Gcode, CAD, AI, CDR, dwg	



Our Distributor Supporting System



Price System

- Complete and competitive distribution price
- Strict price control policy for all sales platform
- Annual sales rebate policy
- Special event price for distributor

Marketing Support

- Customized market materials
- Help find local influencer
- Marketing funding support for local activity, festival, fair
- Assist in local livestream

After-sale Support

- Dedicated after-sales technicians 24/7 service
- Professional after-sale group for each distributor
- Supply related vulnerable spare parts
- Technical training through video and live stream
- Full set of after-sales documents and videos
- Regular feedback collection from distributor

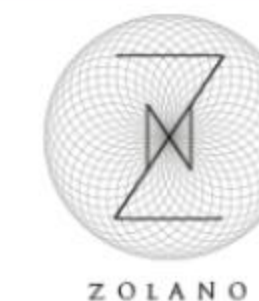
Global Partner



BETTER SOFTWARE FOR LASER CUTTERS



Laser Explorer



GENCOTECH
LASER
MARKING