



PRODUCTS ▾

LASER WELDER

SOLUTIONS ▾

SERVICES ▾

NEWS ▾

ABOUT GW ▾

English

中文

HOME

LASER WELDER

LASER WELDER

Smart Handheld Laser Welder

A1500Ultimate/A1000Standard



Leave Your Message



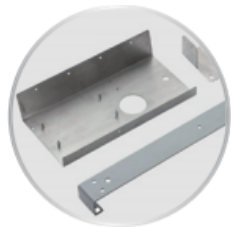
* Name

* Email (We will reply you via email in 24 hours)

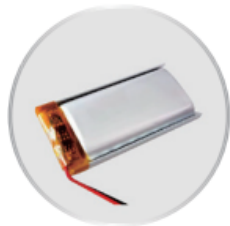
Phone/WhatsApp/WeChat (Very important)

* Enter product details such as size, color, materials etc. and other specific requirements to receive an accurate quote.

Send



Alloy steel



Battery



Sheet metal



Tubes



Appliance



Hardware

Wide Range : Different metal material : Mild steel , Stainless steel , Aluminum , Copper , Brass , etc .



Leave Your Message

* Name

* Email (We will reply you via email in 24 hours)

Phone/WhatsApp/WeChat (Very important)

* Enter product details such as size, color, materials etc. and other specific requirements to receive an accurate quote.

Send



Leave Your Message



Handheld laser welder A1500W



Handheld laser welder A1000W



1500W Air cooled fiber laser source

* Name

* Email (We will reply you via email in 24 hours)

Phone/WhatsApp/WeChat (Very important)

* Enter product details such as size, color, materials etc. and other specific requirements to receive an accurate quote.

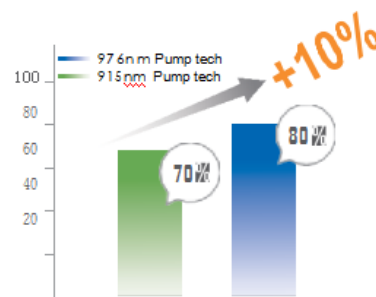
Send

Product Features

Higher Efficiency

Independent intellectual property rights 976nm high-efficiency energy-saving technology,high-brightness single-module laser technology

New air-cooled technology platform architecture,active refrigerant type heat dissipation



Optical-Optical



Air-cooled tech platform

More Portable



Leave Your Message

The weight and volume are better than water cooled hand-held laser welding machine, and the volume is about 1/4, the weight is about 1/3 of it

Extremely lightweight body, so that the application scene has nearly doubled, take it with you, plug and play (220V)

The integrated body design conforms to ergonomics and improves the mobile reliability of the whole machine



Easy to load ,more

* Name

* Email (We will reply you via email in 24 hours)

Phone/WhatsApp/WeChat (Very important)

* Enter product details such as size, color, materials etc. and other specific requirements to receive an accurate quote.

Send

Easy to Operate

Compared with operating traditional welding machines, novice welders do not need a lot of time training and experience accumulation, and only need a few hours of learning to get started easily

The machine presets 55 sets of commonly used welding parameters, which can be quickly switched to the best welding parameters according to different materials and thickness.

Set parameters through the panel, the operation is very intuitive and concise, and can be customized and saved at the same time



Built-in 55 programs+ customizable

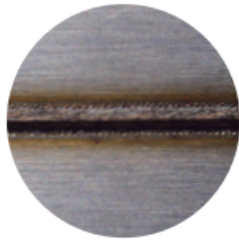
Better performance

In different materials and thickness, better welding effect, without distortion, undercut or burn-through.



Leave Your Message

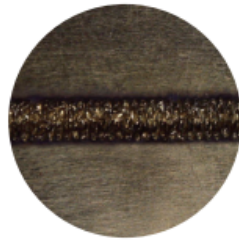
The process is smooth and beautiful, deep penetration, small deformation, no need for subsequent processing



SS stitch welding



SS welding



Copper stitch welding



Copper welding



Alu stitch welding

* Name

* Email (We will reply you via email in 24 hours)

Phone/WhatsApp/WeChat (Very important)

* Enter product details such as size, color, materials etc. and other specific requirements to receive an accurate quote.

Send

Improve Efficiency

Compared with the traditional welding method, it has unparalleled speed advantage, and the efficiency can reach nearly 10 times in some scenarios.

The welding seam is beautiful and has no deformation, which improves the one-time pass rate of the workpiece, only a small amount of solder splashes, reduces the subsequent grinding and polishing process, improves the pass rate, improves efficiency, reduces waste, and reduces the cost of workpieces



TIG/MIG/STICK

10 X
↑
VS



LASER Welder

More Safety



Leave Your Message

Laser welder is IV class laser products. In order to operate safely, require protective measures .

Key switch and an emergency stop button to ensure the safety of operation with color LED lights

QBH interlock ensure the laser transmission integrity

Work-piece and welding head interlock, The laser will automatically off when welding heading leaves the work-piece

E-stop button

Key switch



* Name

* Email (We will reply you via email in 24 hours)

Phone/WhatsApp/WeChat (Very important)

* Enter product details such as size, color, materials etc. and other specific requirements to receive an accurate quote.

Send

Control panel and Interface

All interfaces are uniformly arranged on the back of the machine, clearly marked to facilitate quick start

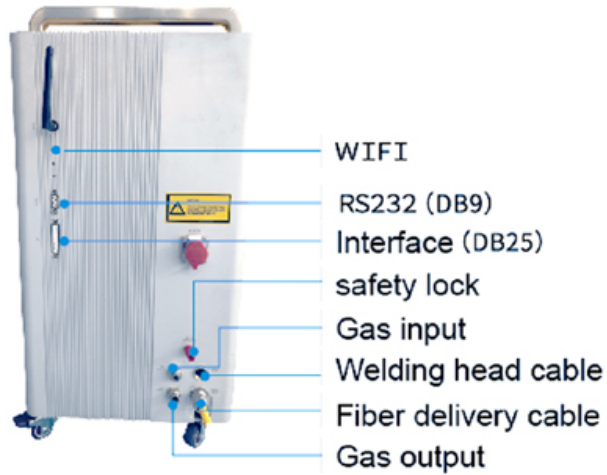
Fiber delivery cable, gas pipes and control cables are pre assembled into the protective cable (5m/10m)

Plug in AC power supply, insert the protective gas, set the parameters, and fix the work-piece to be processed, and the welder will be ready to operated.

Access advance parameter setting page through Ethernet /WIFI, fine adjust and save the parameters



Leave Your Message



* Name

* Email (We will reply you via email in 24 hours)

Phone/WhatsApp/WeChat (Very important)

* Enter product details such as size, color, materials etc. and other specific requirements to receive an accurate quote.

Send

Product Specification

Output power	1500W/1000W	Wobble Width	0-5mm
Voltage Input	220VAC/50Hz/60Hz	Wobble Freq.	0-300HZ
Dimension	650x300x621[mm](L×W×H)	Build-in programs	55 programs
Weight	65[kg]/60[kg]	Avg.power	4650W/3080W (Data from Lab)



Leave Your Message

Packing List and Optional Accessories

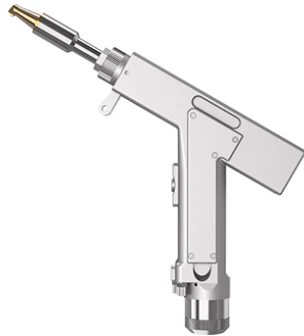
- Power cable
- Laser welder body
- User Manual

- QBH delivery cable(5m/10m)
- Handheld welding gun
- Welding nozzle 5 types

- Wire
- Wel
- Goo

Send

Welding gun and Nozzles



Welding Nozzles for different welding application

The welding gun has been verified to fit are ergonomic design,smooth and easy to operate.

Suitable for continuous welding operations with safety and high quality all day long

Production and Service Network

3 S service and show center:

Shangdong E43#,Expo Xingfu town Boxing Binzhou city.

Zhejiang #10,Bldg15,Jincheng Mid Rd.Yan...

Leave Your Message





Guangdong #01A,F3 Bldg13,Shunlian ma

Company Address :

Shanghai (HQ) Bldg5-1,#398 Shuanglian

Shandong Qilu Laser industry part Zi

Jiangsu 1st JinShan Rd. Rudong T

Northeast CN #265 Yueling Rd.Lishan Ar

* Name

* Email (We will reply you via email in 24 hours)

Phone/WhatsApp/WeChat (Very important)

* Enter product details such as size, color, materials etc. and other specific requirements to receive an accurate quote.

Send

Legal statement:

GW (Shanghai)Laser Technology Co., Ltd. reserves the right to modify any information in this document at any time without prior notice and assumes no responsibility.

During the product sales process, the information in this document is for reference only. Please refer to the sales agreement for specific parameters.



Leave Your Message

* Name

* Email (We will reply you via email in 24 hours)

Phone/WhatsApp/WeChat (Very important)

* Enter product details such as size, color, materials etc. and other specific requirements to receive an accurate quote.

Send



Leave Your Message