



Your reliable supplier & strategic partner **in optics**

Products & Ser..

Your Are Here: [Products & Services](#)> [Precision optical compoments](#)> [IR Lens](#)> [Zinc Selenide](#)

Spherical Lens

Achromatic Lens

Ball Lens

IR Lens

Aspheric Lens

Prism

Mirror

Optical Filter

Window

Cylindrical Lens

Lens Assembly

Rod Lens

Test Plates

Zinc Selenide

Silicon	Germanium
Calcium Fluoride	Sapphire
Zinc Sulfide	Zinc Selenide

Zinc Selenide lenses are an excellent choice of materials for IR lenses for application between 600 nm to 16 microns wavelengths. Its low absorption coefficient makes it a perfect candidate for applications/instruments using CO2 lasers. In mid IR regime it has a very low GVD which makes it suitable for applications using femtosecond IR pulses.

Specifications:

Material: ZnSe

Diameter Tolerance: +0.00, -0.15mm(Standard),

+0.00,-0.02mm(Precision)

Flatness: $\lambda @ 632.8\text{nm}$

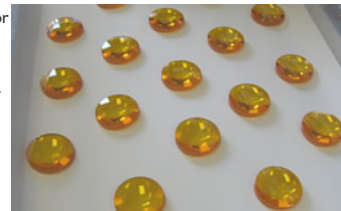
Surface Quality: 60-40 S/D

Paraxial Focus Length: +/-2%

Centration: <5arc minutes

Clear Aperture: >85% of diameter

Bevel: 0.25x45deg



[back](#)

About Us

[About Us](#)

[Contact](#)

Products & Servers

[Standard products](#)

[Precision optical compoments](#)

[Coatings](#)

News

TOP

[Home](#)