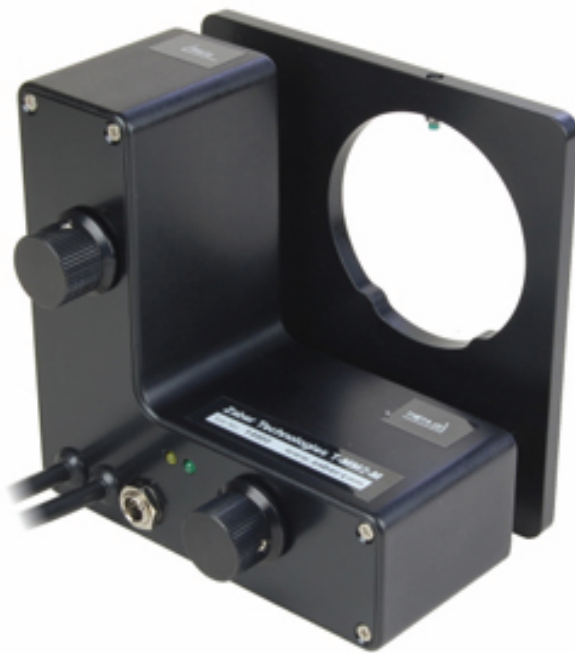


T-MM Series: Motorized mirror mounts with built-in controllers



Lens Adaptor (optional)
12mm/0.5" Optics



Lens Adaptor (optional)
25mm/1" Optics



Lens Adaptor (optional)
C-mount

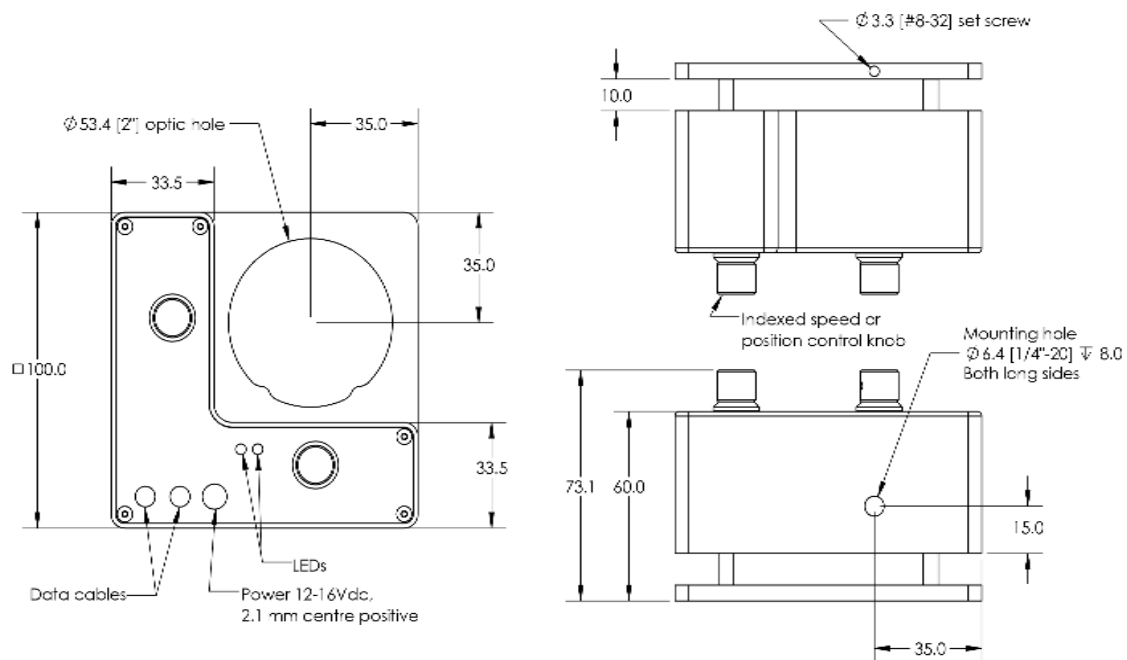


- Two-axis kinematic mount with $\pm 5^\circ$ range
- Repeatability down to 0.015°
- Holds 2" (50 mm) optics; adaptors available for C-Mount, 1" (25 mm), and 1/2" (12.5 mm) optics
- Built-in controller; daisy-chains data and power with other T-Series products

Product Description

The T-MM2 Series are motorized two axis mirror mounts. They can be controlled manually or by using the RS-232 serial interface.

Dimension Drawings



Product Specifications

Specification	Value	Alternate Unit
Microstep Size (Default Resolution)	0.000086 degrees	1.501 urad
Built-in Controller	Yes	
Range	-5.27 to +5.27 degrees	
Accuracy (unidirectional)	0.06 degrees	1.047000 mrad
Repeatability	< 0.015 degrees	< 0.262 mrad
Backlash	< 0.03 degrees	< 0.524 mrad
Maximum Speed	3.44 deg/s	0.6 rpm
Minimum Speed	0.000806 deg/s	14.067 urad/s
Speed Resolution	0.000806 deg/s	
Encoder Type	None	
Communication Interface	RS-232	
Communication Protocol	Zaber Binary	
Maximum Centered Load	15 N	3.4 lb
Maximum Current Draw	530 mA	
Power Supply	12-16 VDC	
Power Plug	2.1 mm center positive	
Angular Motion Per Motor Rev	0.264 degrees	
Motor Steps Per Rev	48	
Motor Type	Stepper (2 phase)	
Inductance	55 mH/phase	
Default Resolution	1/64 of a step	
Data Cable Connection	Minidin 6	
Mechanical Drive System	Precision lead screw	
Limit or Home Sensing	Magnetic home sensors	
Manual Control	Yes	
Axes of Motion	2	
LED Indicators	Yes	
Mounting Interface	1/4-20 threaded adapter	
Optic Mounting Interface	2" diameter optics	
Vacuum Compatible	No	
Operating Temperature Range	0 to 50 degrees C	
RoHS Compliant	Yes	

Specification	Value	Alternate Unit
CE Compliant	Pending	
Weight	0.55 kg	