

Stainless Steel Knife



Stainless Steel Spoon





Cast Aluminum

Anodized Aluminum



1.00mm Brass--Deep Marking



Dial



0.80mm Stainless Steel--Deep Marking



Watch Housing



Belt Buckle--Black Marking



Mobile Housing



Washington, North Carolina 27889 (252) 975-1141

BAG-IN/BAG-OUT FILTER HOUSING

CAMFIL JOB #:

CAMFIL MODEL #:

PREFILTER PART #:

CHANGE-OUT BAG:

FINAL FILTER PART#:

CHANGE-OUT BAG:

CAUTION: STOP AIRFLOW THROUGH HOUSING BY SHUTTING DOWN THE SYSTEM OR CLOSING UPSTREAM AND DOWNSTREAM ISOLATION DAMPERS BEFORE REMOVING DOOR. CONSULT YOUR SAFETY OFFICER AND READ INSTRUCTION MANUAL TO ENSURE PROPER FILTER INSTALLATION AND CHANGE-OUT.

Stainless Steel Nameplate--Black Marking

Scan me



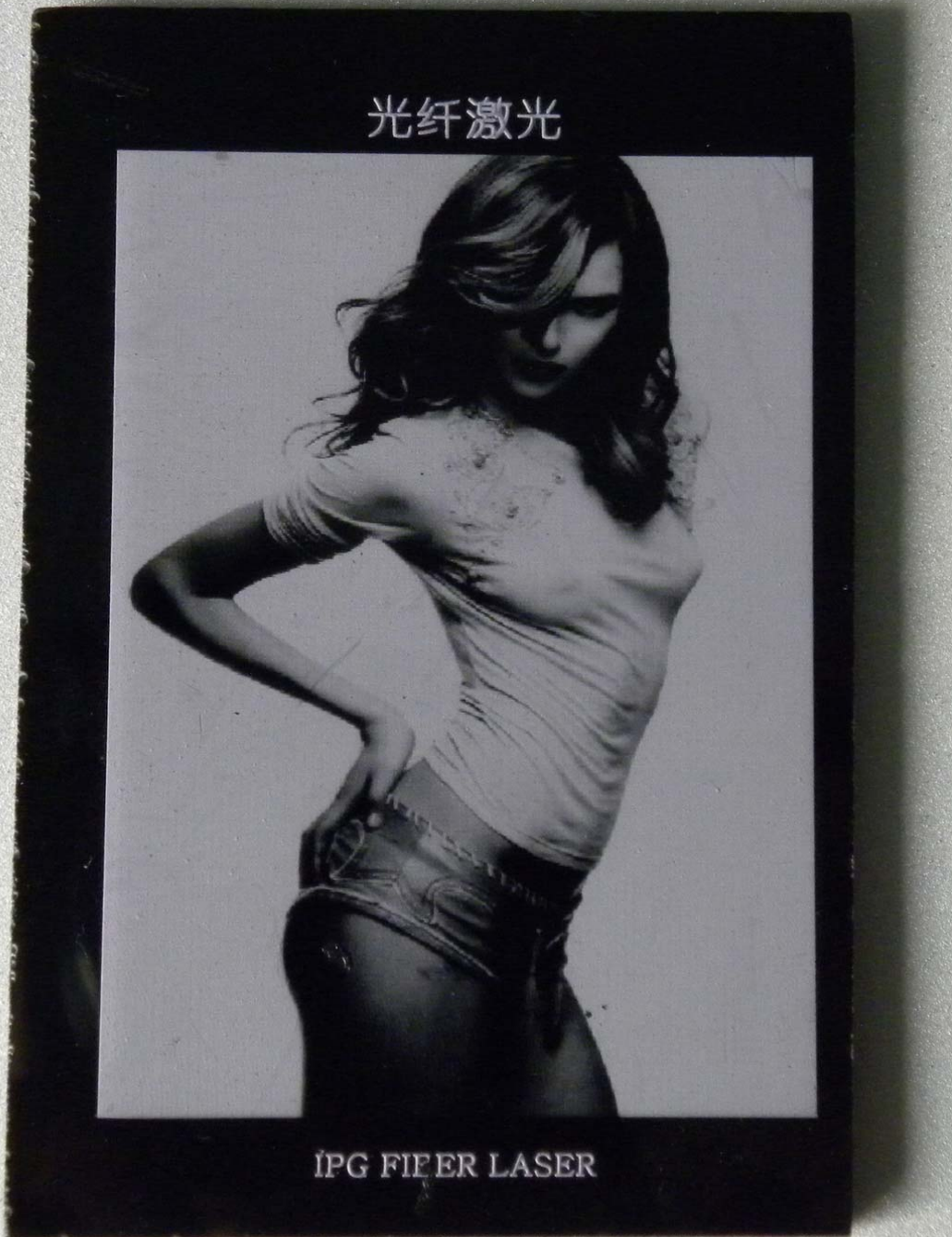
Scan me



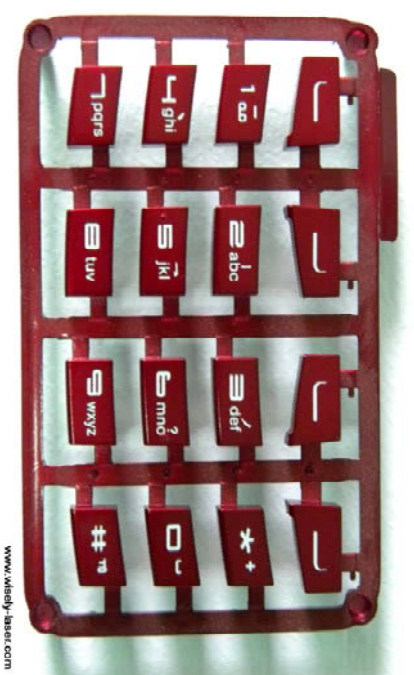
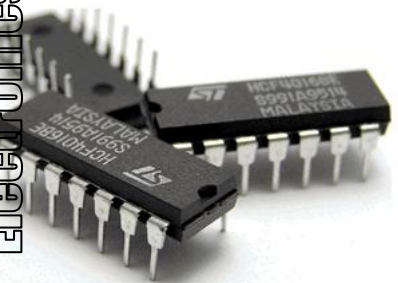
Polished Stainless Steel



光纤激光



Electronics Accessories



Black Acrylic

www.wisely-laser.com



QR code



Fiber Laser Marking Machine--MY-M10/20F-V

Features

There is a firm protection cover for the machine, it is very suitable for the machine sales in developed countries, it can protect you from hurt when the machine working.

Application Materials

WISELY laser marking machine can work with most metal marking applications, such as Stainless Steel, Brass, Aluminium, Steel, Iron etc, and can also mark on many non-metal materials, such as ABS, Nylon, PES, PVC, Makrolon.

Applicable Industries

| | |
|------------------------|---|
| Electronic Components: | Resistors, Capacitors, Chips, Printed Circuit Boards, Computer Keyboard, etc. |
| Mechanical Parts: | Bearings, Gears, Standard Parts, Motor, |
| Instrument: | Panel Board, Nameplates, Precision equipment, etc. |
| Hardware Tools: | Knives, Tools, Measuring Tools, Cutting Tools, etc. |
| Automobile Parts: | Pistons and Rings, Gears, Shafts, Bearings, Clutch, Lights, etc. |
| Daily Necessities: | Handicrafts, Zipper, Key Holder, Sanitary Ware, etc. |

Advantages

- 1) Protection Cover can protect the operator when processing.
- 2) High Precision: upto 0.0012mm, bring you the fantastic and satisfied marking effect.
- 3) Superior Laser Beam: the definition is 1 micron, 10 times as that of traditional products.
- 4) No Consumables: One Fiber marker can work for more than 10 years without any consumables.
- 5) Fast Speed: 800 standard characters per second, is 3 to 5 times above that of traditional products.
- 6) The fiber laser beam comes out from the IPG fiber device directly, no need to adjust the laser optical path.
- 7) With Motorized Up/Down Focus and scale plate, capable to make location precisely, it is convenient and swift.
- 8) Low consumption: <400W, is 1/25 ~ 1/10 times as that of Diode and YAG, more economized and environmental.
- 8) Original Scaps controller, USB interface, swift and stable transmission, easy software operation, strong functions.
- 9) Original ScanLAB scan head, with good seal, capable to prevent dust and water, small volume, compact and solid.
- 10) Long lifespan of IPG laser module: 0.1-0.2 million hrs (light pumping YAG: several hundred hrs; semi-conductor: 10 000 hrs)
- 11) Strong Compatibility: TTF Font, SHX, BMP, DXF, AI, PLT and other format files output from CorelDraw, PS, AutoCAD, etc..
- 12) Integrated Air Cooling System: The cooling effect is more excellent than the water cooling effect in YAG laser, no maintenance.
- 13) Deeper Marking: Max. 1.2mm stainless steel, suitable for the industries which needs high precision and depth marking effect.

Technical Parameters



Innovative Design for Sales

Protection Cover for Operator

Original Parts from Germany

Same quality, speed and precision as other types

| Type | MY-M10F-V | MY-M20F-V |
|-----------------------|---|-----------|
| Power | 10W | 20W |
| Laser Wavelength | 1064nm | |
| Marking Area | 150mm*150mm | |
| Optional Marking Area | 50mm*50mm / 100mm*100mm / 200mm*200mm / 300mm*300mm | |
| Marking Depth | ≤1.2mm | |
| Marking Speed | 800 standard characters/second | |

| | |
|--|---|
| Minimum Line Width | 0.012mm |
| Minimum Character | 0.15mm |
| Repeated Precision | ±0.003mm |
| Fiber Laser Source | Imported with original packaging--IPG in Germany--www.ipgphotonics.com |
| Scan Head | Imported with original packaging--ScanLAB in Germany--www.scanlab.de |
| Controller (Software--SAMLIGHT) | Imported with original packaging--Scaps in Germany--www.scaps.com |
| Life-span of Fiber Laser Module | 100 000-200 000 hours |
| Beam Quality | M ² <1.5 |
| Focus Spot Diameter | <0.01mm |
| Output Power of Laser | 10%~100% continuously to be adjusted |
| Output Frequency of Laser | 20KHz~100KHz continuously to be adjusted |
| Power Stability (8h) | <±1%rms |
| Marking Type | Dynamic Mark / Static Mark |
| System Operation Environment | WindowsXP / Windows 7--32/64bits / Windows 8--32/64bits |
| Cooling Mode | Air cooling--Built-in |
| Temperature of Operation Environment | 15°C~35°C |
| Voltage | 220V / 50HZ / single phase or 110V / 60HZ / single phase |
| Power Requirement | <400W |
| Computer Requested | There will be one PC with the machine |
| Dimension (L*W*H) | 600mm*750mm*1370mm |
| Package Size | 850mm*1000mm*1800mm |
| Net Weight | 150KG |
| Gross Weight | 200KG |
| Optional (Not free of charge) | Rotary Device, Moving Table, other Automatic Matching System |

Shipment

We will effect shipment within **1-7 working days** after receiving your payment.

Payment

By T/T, L/C, Collection and Payment on Delivery. Payment Terms can be negotiable.

Packaging

International Standard Packing--Plywood Case--free of fumigation. If the buyer needs the Certificate of Fumigation, we can help him, but the cost will be on the buyer's account.

Warranty

Whole machine has a warranty period of 12 months since the delivery.

This warranty does not cover items damaged while in the process of shipping. We do our best to package products in very safe shipping containers. If you purchase any component and pay for that shipping, then any item damaged in shipping must undergo a claim through your shipper. If you are person/company that paid for the shipping, then you must file that claim. We cannot send you another part for free while your claim is being processed. You may purchase a replacement part which we will attempt to mail to you again. If you are returning a part to be tested, then that part is considered "GOOD" until it is tested to be bad. You must insure the parts during shipment. If that part is damaged in shipping, then you must file a claim for shipping damage. Please understand that all shipping companies will conduct a damage investigation before they will pay restitution.

Training

Welcome to our company to learn how to operate the machine, we can offer you unlimited training free of charge.

Service

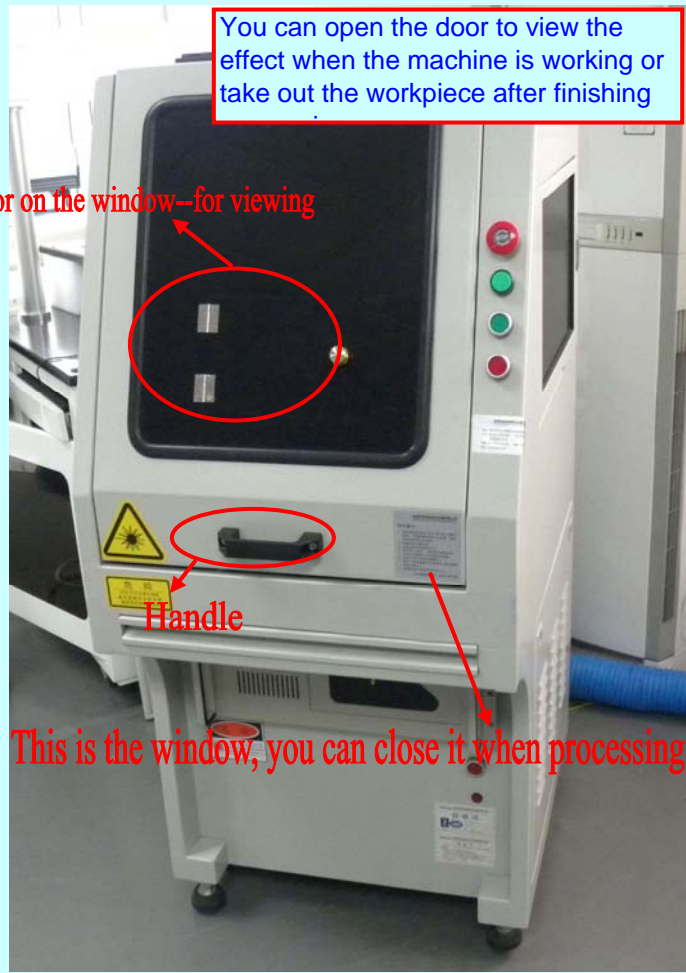
If you need local service, we can send our technician to your company within 3-7 days, but the buyer should pay the cost including the ticket, hotel and so on.

Samples

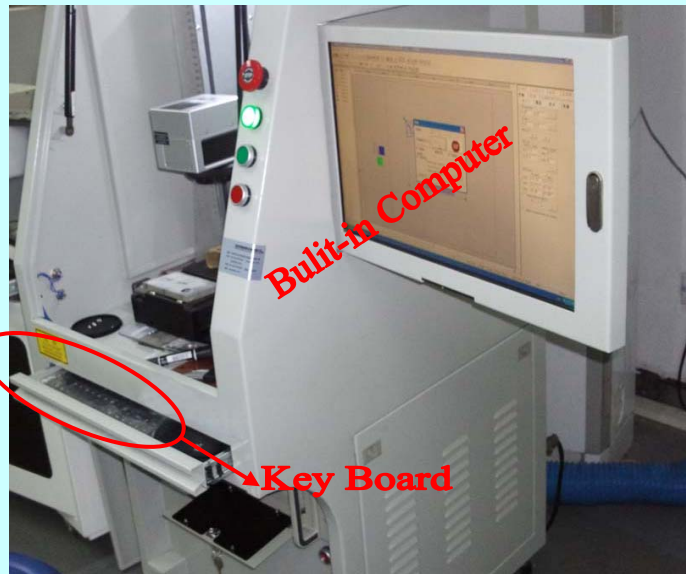
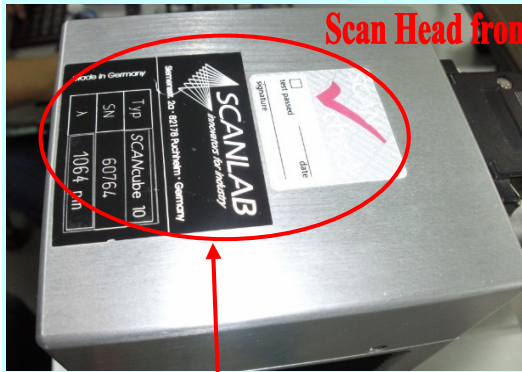
- 1) Samples available, we can make the samples at your request. If the package is small and you are planning to work with us, we can pay the TNT or FedEx freight.
- 2) All samples in the images are made by WISELY Fiber Laser Marker, copy right reserved!



You can open the door to view the effect when the machine is working or take out the workpiece after finishing



Scan Head from SCANLAB



Warning: Warranty for ScanLAB Scan Head



= Germany Quality

We use Germany IPG



There are about six types of "IPG" in China:

- (1) Original and brand-new from Germany, sold by IPG's distributor HM Laser in Beijing
- (2) Obsolete IPG, not current IPG
- (3) Second-hand
- (4) Reworked
- (5) Assembled, by so-called IPG technology or Germany technology
- (6) Copy

Which one will you get from other suppliers?
 You will get the ORIGINAL IPG from us!!



| | | | |
|--|--|-----------|--------|
| | TEST RESULTS YTTERBIUM PULSED FIBER LASER Model YLP-1-100-20-20-RG S/N 1307016912 | Form: | 38169 |
| | | Revision: | 4 |
| | | Page: | 1 of 3 |

This product is covered by the U.S. Pat. Nos. 5,422,897 and 5,774,484 and any foreign counterparts thereof, and other patents pending.

The information and the following charts provided below is the result of tests performed in controlled environments by IPG Laser. These provided useful, but not warranted, information about the functions and performance of the product.

| N | Characteristic | Symbol | Test Conditions | Min | Typ. | Max | Test Results | Unit |
|--|-------------------------------------|-----------------|------------------------------------|--------|------|------|--------------|---------|
| Optical characteristics | | | | | | | | |
| 1. | Mode of operation | | | pulsed | | | pulsed | |
| 2. | Nominal average output power | P_{nom} | RR = 20 kHz RR = 200 kHz | 19 | 20 | 21 | 20.1 20.4 | W |
| 3. | Output power adjusting range | | | 10 | | 100 | tested | % |
| 4. | Central emission wavelength | λ | $P_{out} = P_{nom}$ RR = 20 kHz | 1055 | 1064 | 1070 | 1064.9 | nm |
| 5. | Emission bandwidth | $\Delta\lambda$ | FWHM | | 5 | 10 | 4.2 | nm |
| 6. | Pulse duration | Δt | $P_{out} = P_{nom}$ RR = 20 kHz | 90 | 100 | 120 | 107.5 | ns |
| 7. | Laser switching ON time | | 0% → 90% P_{nom} | | 170 | 250 | 161 | μ s |
| 8. | Laser switching OFF time | | 100% → 10% P_{nom} | | 170 | 250 | 209 | μ s |
| 9. | Pulse repetition rate | RR | | 20 | | 200 | 20 - 200 | kHz |
| 10. | Pulse energy | | $P_{out} = P_{nom}$ RR = 20 kHz | | 1 | | 1.01 | mJ |
| 11. | Long-term average power instability | | $P_{out} = P_{nom}$ over 5 hrs | | | 5 | <3 | % |
| 12. | Red guide laser power (optional) | | $\lambda = 660$ nm | 0.3 | 0.5 | 1 | 0.5 | mW |
| Optical output (with built-in optical isolator) | | | | | | | | |
| 13. | Output beam diameter | | 86% level | 6 | 7.5 | 9 | 6.8 | mm |
| 14. | Output beam divergence adjustment | | minimum of divergence | | | | 0.27 | mrad |
| Electrical characteristics | | | | | | | | |
| 15. | Interface type | | | B1 | | | B1 | |
| 16. | Laser module supply voltage | | | 23 | 24 | 25 | 24 | V |
| 17. | Nominal current consumption | | $P_{out} = P_{nom}$ | | | 7 | 4.07 | A |
| General characteristics | | | | | | | | |
| 18. | Warm-up time to full stabilization | | | | 10 | | 10 | min |

Tested by: Date: 16.07.2013

Approved by: D. Popov

| | | | |
|--|--|-----------|--------|
| | TEST RESULTS YTTERBIUM PULSED FIBER LASER Model YLP-1-100-20-20-RG S/N 1307016912 | Form: | 38169 |
| | | Revision: | 4 |
| | | Page: | 2 of 3 |

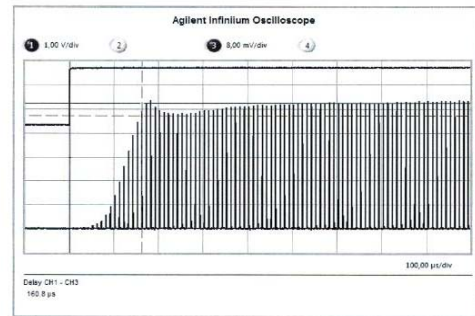


Fig. 1 Laser switching ON time (0% to 90% nominal output power)

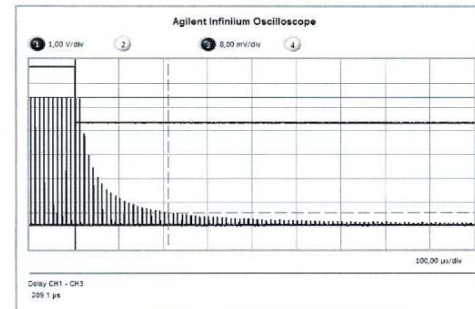


Fig. 2 Laser switching OFF time (100% to 10% nominal output power)

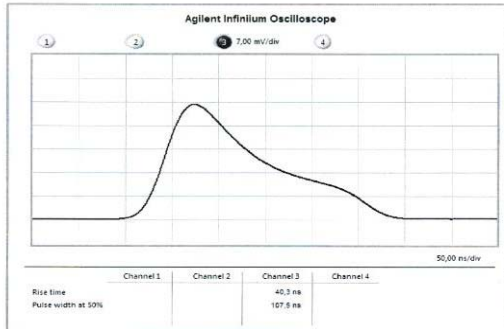


Fig. 3 Pulse shape at the RR = 20 kHz and nominal output power

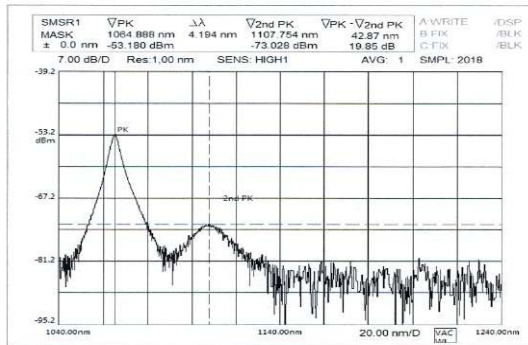


Fig. 4 Output spectrum at the RR = 20 kHz and nominal output power

Introduction of Fiber Laser Source made in China



Of course, Raycus is the best manufacturer of fiber laser source made in China, some Chinese suppliers of laser marker use the laser source made by them.

We use Germany ScanLAB



You will get the ORIGINAL ScanLAB from us!!

Tested Scan System: SCANCube 10

Article No: 111766

Serial No: 394016

Calibration: ± 11.70 degrees, mechanical

| Statics | | Test Date: 16.Mai.2013 08:50:36 | | | |
|----------|---|---|-------------------------------------|--------|--|
| X/Y Axis | Req. Optical Full-Scale Angle value tolerance | Required Optical Offset value tolerance | Required Skew Angle value tolerance | Passed | |
| X | 0.851 rad ± 5.0 mrad | 0.000 rad ± 5.0 mrad | 0.000 rad ± 1.5 mrad | ☑ | |
| Y | 0.851 rad ± 5.0 mrad | 0.000 rad ± 5.0 mrad | 0.000 rad ± 1.5 mrad | ☑ | |

| Dynamics | | Test Date: 16.Mai.2013 08:52:04 | |
|------------------------------|--------|---------------------------------|--|
| Specification | Passed | | |
| Oscillation Test 2 | ☑ | | |
| Oscillation Test 1 | ☑ | | |
| Scan Field Test Axis 2 | ☑ | | |
| Scan Field Test Axis 1 | ☑ | | |
| Current Test Square Function | ☑ | | |
| Current Repetitive Response | ☑ | | |
| Automatic Gain Control | ☑ | | |
| Slew Rate Limit Neg | ☑ | | |
| Slew Rate Limit Pos | ☑ | | |
| Vector Matching | ☑ | | |
| Vector Response | ☑ | | |
| Repetitive Matching | ☑ | | |
| Repetitive Response | ☑ | | |

| Wobble | | Test Date: 16.Mai.2013 08:52:55 | |
|-----------|------------------------|---------------------------------|--|
| Scan Axis | Maximum Mechanical RMS | Passed | |
| 1 | 1.30 prad | ☑ | |
| 2 | 1.30 prad | ☑ | |

Final Result ⇔ PASSED

Definition of Terms

Calibration Indicates the range of mechanical angles to which both scanners are equalized. Calibration is performed at 95% of a scanner's full-scale setting.

Scan Axis 1, 2 A beam entering the entrance aperture first hits Scan Axis 1 and then Scan Axis 2.

XY Axis: A beam projects along the x-axis if scan axis 2 is varied and scan axis 1 is kept un-deflected. If scan axis 1 is varied and scan axis 2 is kept un-deflected, the beam projects along the y-axis.

Optical Angle Equals 2 times the mechanical angle.

Wobble RMS The root mean square of a scanner's wobble for a specific time period.

FORM 107

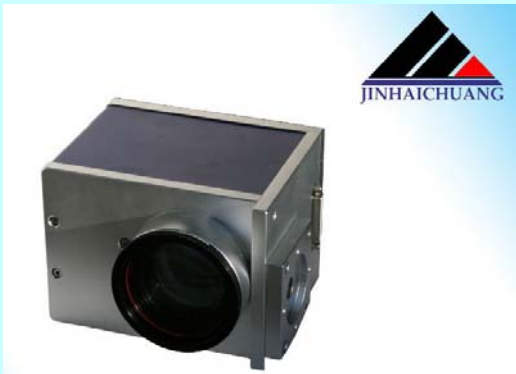
This report is generated with SCANLAB's automated Test System STS

Final Test Report

Page 1 of 1

Serial No: 394016

Introduction of Scan Head made in China



www.jhckj.com

Scan Head from Jinhaichuang Technology

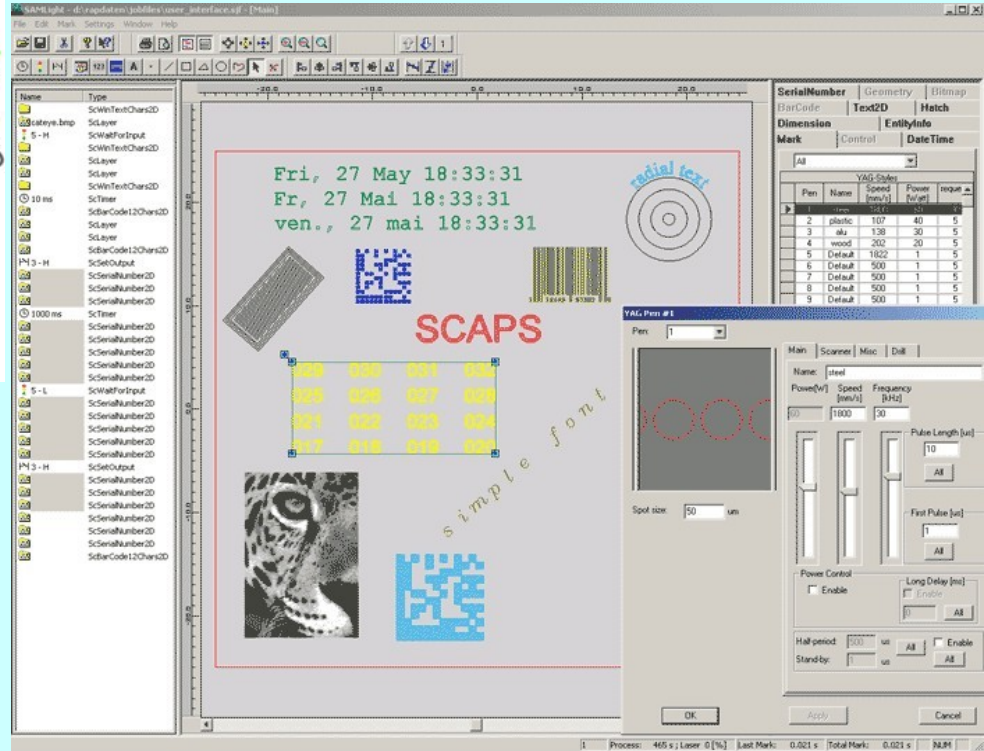
www.century-sunny.com

Scan Head from Beijing Century Sunny Technology

We use Germany Scaps

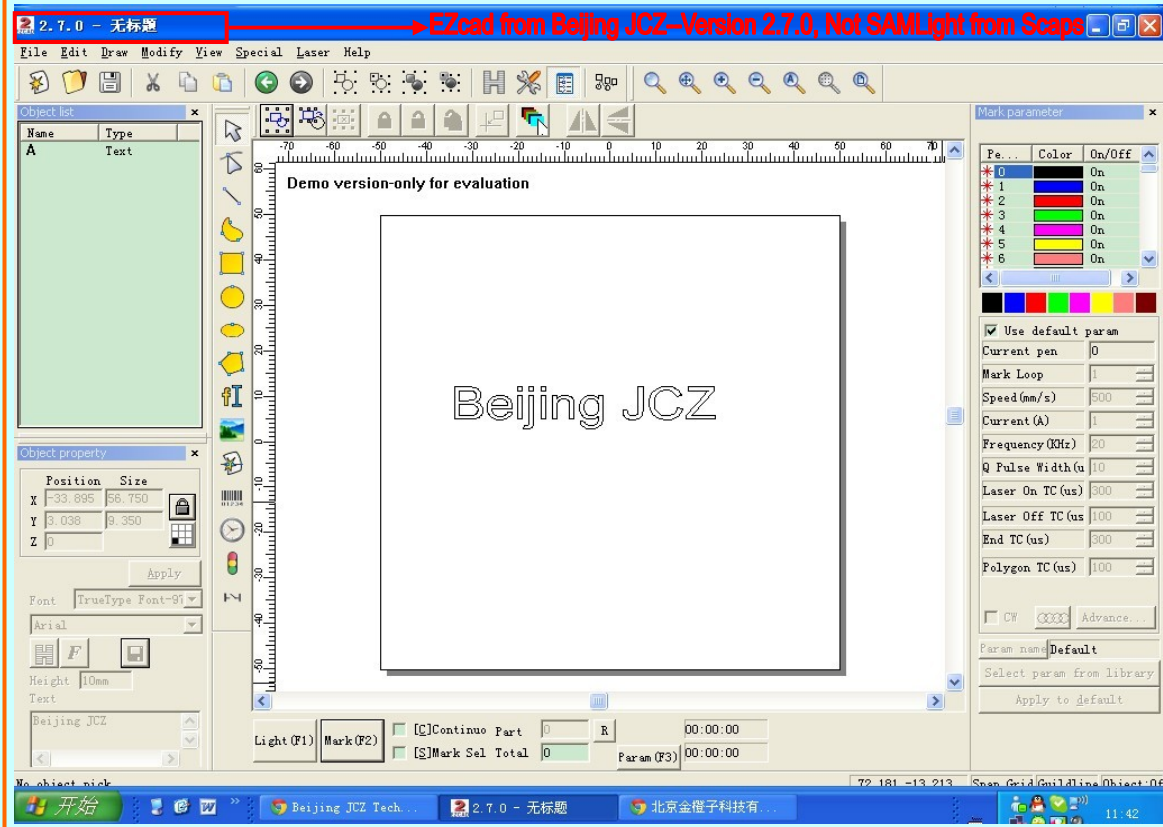


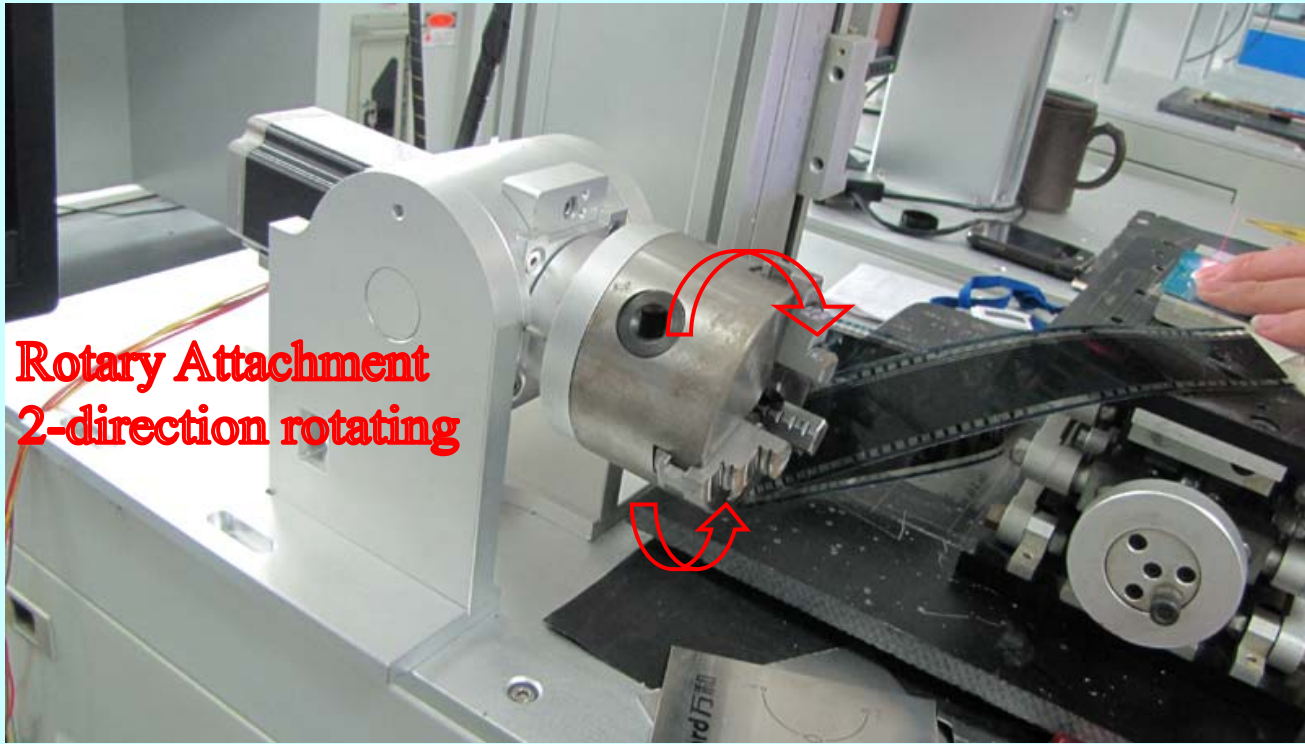
The control card matters to the marking speed and precision!
Each set of controller has password from Scaps.



You will get the ORIGINAL Scaps from us!!

Introduction of Controller made in China--Beijing JCZ





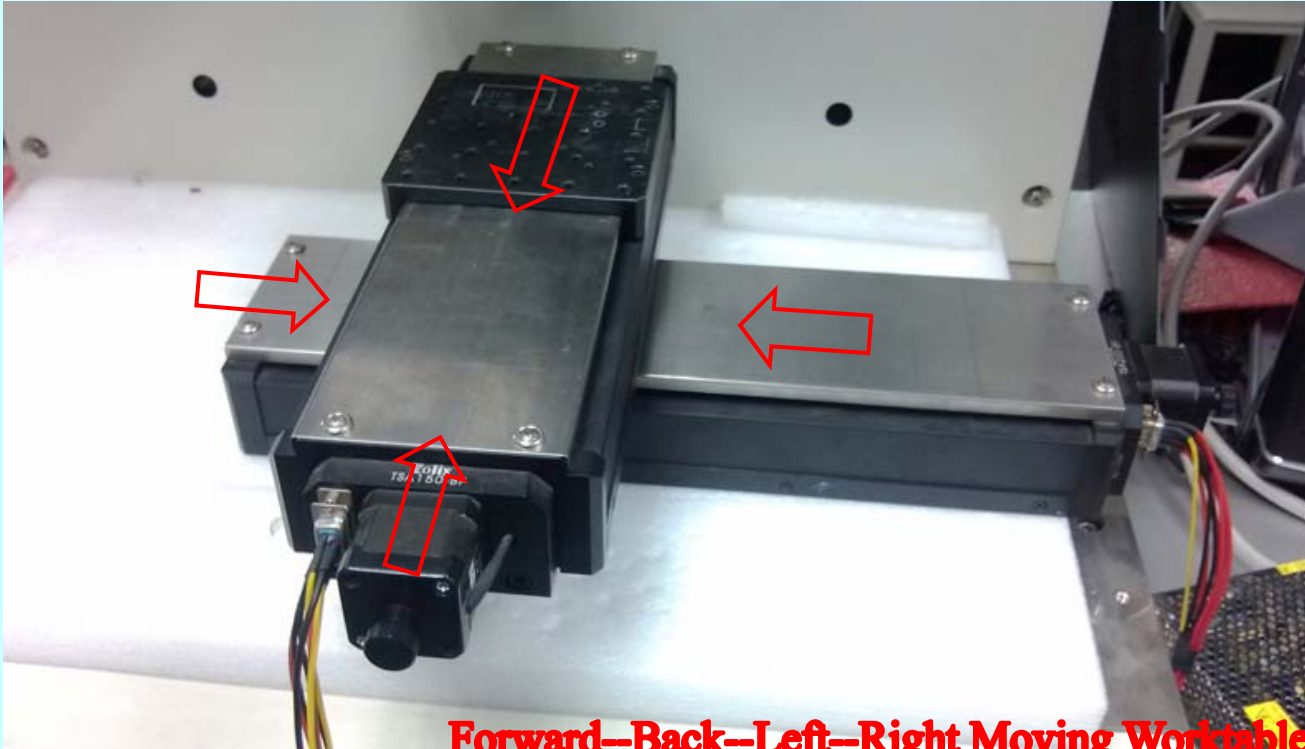
**Rotary Attachment
2-direction rotating**



2-direction rotating

Left-Right Moving Worktable

OPTICONS | DEVICES



**Forward--Back--Left--Right Moving Worktable
2-direction rotating**

**We can provide the Customized Automatic Matching System,
just tell us your request by sales@wwlaser.hk**