

SWIR IMAGING

WiDy InGaAs Camera

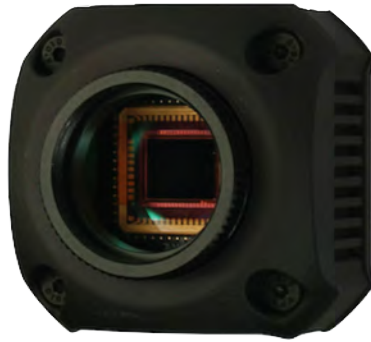
Log Response >140dB Dynamic Range

Fast Gating 200 ns

High QE 900 - 1700 nm

USB3.0 or CameraLink

Low Power & Small Form Factor



actual size

AXIOM
OPTICS



Active Imaging**Industrial Vision****Beam Viewing****Welding****Beam Tracking****Semi-conductor****Multi-spectral****Defense**

	WiDy SWIR 640	WiDy SWIR 320
Sensor	NSC1201 -SI	NSC0803 -SI
Resolution	640 x 512 pixels	320 x 256 pixels
Sensor Format	2/3"	1/1.6"
Operating Temperature	-40°C to +70°C · TEC cooling optional	
Power Consumption	<1.5 W	
Material	InGaAs	
Sensitivity	900 – 1700 nm	
Pixel Size	15 µm x 15 µm	25 µm x 25 µm
Max. QE	80%	
Readout Noise (e⁻)	~100	
Dark Charge (e⁻/pix/sec) at 25°C	1.2 x 10 ⁶	2.4 x 10 ⁶
Minimum Exposure time	Standard mode: 100 µs (fixed trigger delay) Gated mode: 200 ns (adjustable trigger delay)	
Dimensions	49 x 49 x 33 mm	
Interface	CameraLink, USB 2.0 and 3.0, Analog Video Composite	
Dynamic Range	Standard mode: >140 dB, logarithmic response Gated mode: 60 dB, linear response	
Lens Mount	CS/C mount	
A/D Converter	14 bits	
Max Frame Rate	CameraLink: 140 fps USB3.0: 140 fps Analog: 25 fps (CCIR) / 30 fps	CameraLink: 310 fps USB2.0: 240 fps Analog (rolling): 25 fps (CCIR) / 30

manufactured by

**niT**

axiomoptics.com (617) 401-2198 info@axiomoptics.com

Boston, MA - Los Angeles, CA