

## Raycus Fiber Laser Marking Machine--MY-M20F-II

### Features

Open worktable, easy to load the material and can work with customized automatic matching system.

### Application Materials

WISELY laser marking machine can work with most metal marking applications, such as Stainless Steel, Brass, Aluminium, Steel, Iron etc, and can also mark on many non-metal materials, such as ABS, Nylon, PES, PVC, Makrolon.

### Applicable Industries

Electronic Components:	Resistors, Capacitors, Chips, Printed Circuit Boards, Computer Keyboard, etc.
Mechanical Parts:	Bearings, Gears, Standard Parts, Motor,
Instrument:	Panel Board, Nameplates, Precision equipment, etc.
Hardware Tools:	Knives, Tools, Measuring Tools, Cutting Tools, etc.
Automobile Parts:	Pistons and Rings, Gears, Shafts, Bearings, Clutch, Lights, etc.
Daily Necessities:	Handicrafts, Zipper, Key Holder, Sanitary Ware, etc.

### Advantages

- 1) High Precision: Upto 0.0012mm, bring you the fantastic and satisfied marking effect.
- 2) Superior Laser Beam: The definition is 1 micron, 10 times as that of traditional products.
- 3) No Consumables: One Fiber marker can work for more than 10 years without any consumables.
- 4) High Speed: 7000mm / second, is 3 to 5 times above that of traditional products.
- 5) The fiber laser beam comes out from the IPG fiber device directly, no need to adjust the laser optical path.
- 7) Low consumption: <500W, is 1/25 ~ 1/10 times as that of Diode and YAG, more economized and environmental.
- 8) Original JCZ controller, USB interface, swift and stable transmission, easy software operation, strong functions.
- 9) High-quality scan head, with good seal, capable to prevent dust and water, small volume, compact and solid.
- 10) Long lifespan of Raycus laser module: 0.1-0.2 million hrs (light pumping YAG: several hundred hrs; semi-conductor: 10 000 hrs)
- 11) Strong Compatibility: TTF Font, SHX, BMP, DXF, AI, PLT and other format files output from CorelDraw, PS, AutoCAD, etc..
- 12) Integrated Air Cooling System: The cooling effect is more excellent than the water cooling effect in YAG laser, no maintenance.
- 13) Deeper Marking: Max. 1mm stainless steel, very suitable for the industries which needs high precision and depth marking effect.

### Technical Parameters

Type	MY-M20F-II
Power	20W
Laser Wavelength	1064nm
Marking Area	150mm*150mm
Optional Marking Area	50mm*50mm / 100mm*100mm / 200mm*200mm / 300mm*300mm
Marking Depth	≤1mm
Marking Speed	7000mm/s
Minimum Line Width	0.015mm
Minimum Character	0.2mm
Repeated Precision	±0.003mm
<b>Fiber Laser Source</b>	<b>Raycus from China</b>
<b>Scan Head</b>	<b>GalvoTech or CenturySunny from China</b>
<b>Controller (Software--EzCad)</b>	<b>JCZ from China</b>
<b>Life-span of Fiber Laser Module</b>	<b>100 000-200 000 hours</b>
Beam Quality	M <sup>2</sup> <1.6
Focus Spot Diameter	<0.01mm
Output Power of Laser	10%~100% continuously to be adjusted
Output Frequency of Laser	20KHz~80KHz continuously to be adjusted
Power Stability (8h)	<±1.5%rms
System Operation Environment	Windows XP / Windows 7--32bits
Cooling Mode	Air cooling--Built-in
Temperature of Operation Environment	15℃~35℃

Voltage	220V / 50HZ / 1-PH or 110V / 60HZ / 1-PH
Power Requirement	<500W
Computer Requested	There will be one PC with the machine
Dimension (L*W*H)	550mm*740mm*1350mm
Package Size	850mm*850mm*1500mm
Net Weight	130KG
Gross Weight	180KG
Optional (Not free of charge)	Rotary Device, Moving Table, other customized Automatic Matching System

**Shipment**  
We will effect shipment within **1-7 working days** after receiving your payment.

**Payment**  
By T/T, L/C, Collection and Payment on Delivery. Payment Terms can be negotiable.

**Packaging**  
International Standard Packing--Plywood Case--suitable for the long-distance truck or train transportation, moisture, rust and shock, prevent rough handling, suitable for integral lifting.

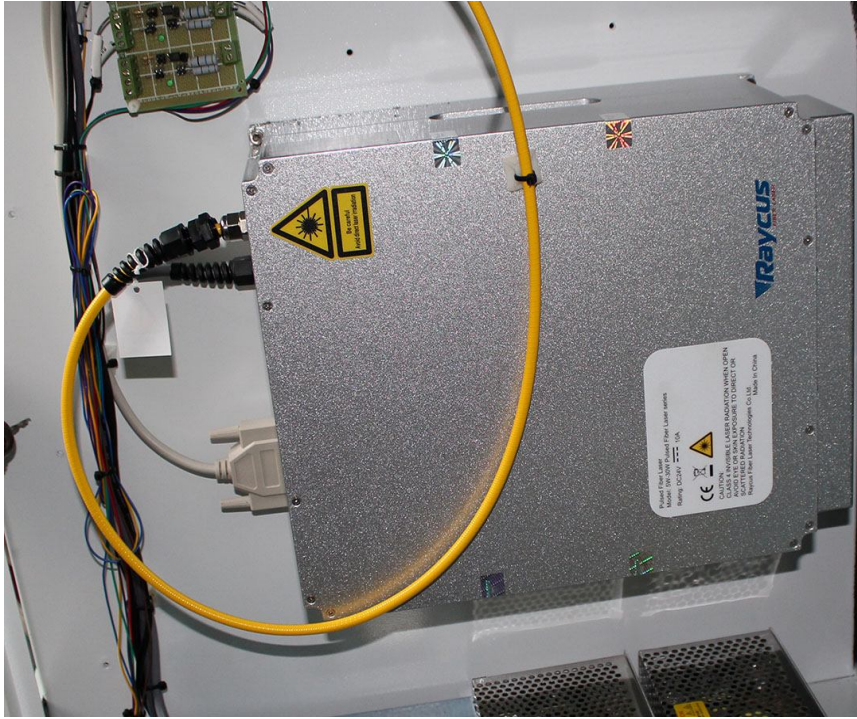
**Warranty**  
Whole machine has a warranty period of 12 months since the delivery.

**Training**  
Welcome to our company to learn how to operate the machine, we can offer you 7 days training free of charge.

**Service**  
If you need local service, we can send our technician to your company within 3-7 days, but the buyer should pay the cost including the ticket, hotel and so on.

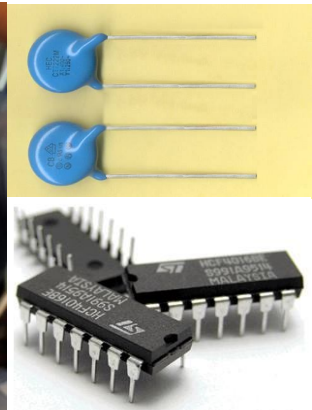
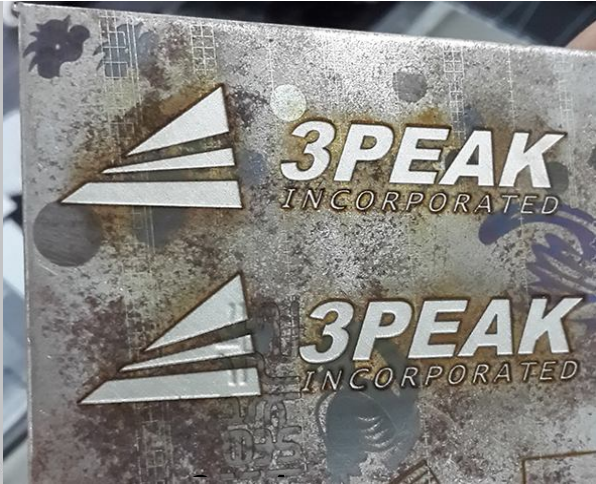
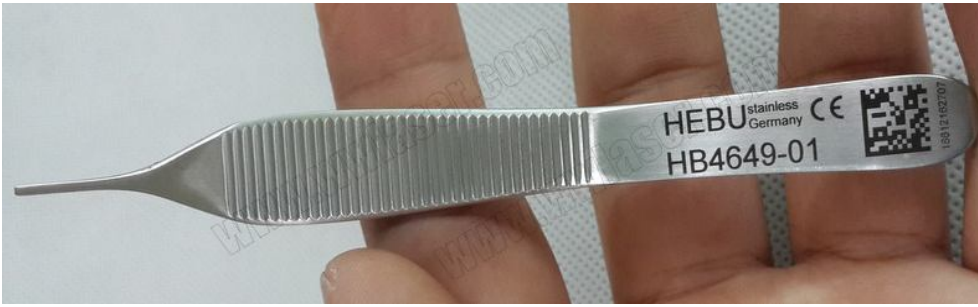
**Samples**  
1) Samples available, we can make the samples at your request. If the package is small and you are planning to work with us, we can pay the TNT or FedEx freight.  
2) All samples in the images are made by WISELY Fiber Laser Marker, copy right reserved!





# Samples Marking



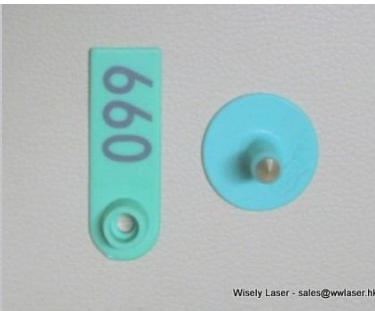




Wisely Laser - sales@wwlaser.hk



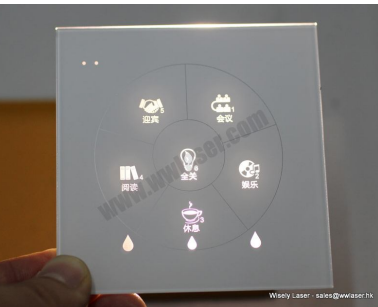
Wisely Laser - sales@wwlaser.hk



Wisely Laser - sales@wwlaser.hk



Wisely Laser - sales@wwlaser.hk



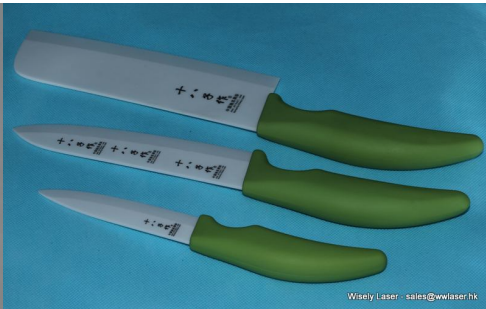
Wisely Laser - sales@wwlaser.hk



Wisely Laser - sales@wwlaser.hk



Wisely Laser - sales@wwlaser.hk



Wisely Laser - sales@wwlaser.hk



