



| Real-Time Ultrafast Laser Pulse Measurement



HOME

COMPANY

NEWS

PRODUCTS

TECHNOLOGY

SUPPORT

CONTACT

PRODUCTS

PULSE MEASUREMENT

- FROGscan
- FROG Scan Ultra
- X-FROG Scan
- VideoFROG Scan Software
- FROG Scan Data
- Autocorrelator
- LABVIEW VIS
- OPTICAL DELAY

Upcoming Events

News

Product Demo

PRODUCTS | VideoFROG Scan Software

VideoFROG Scan has versatile data acquisition, processing, and display

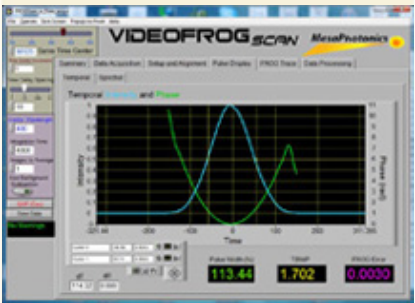
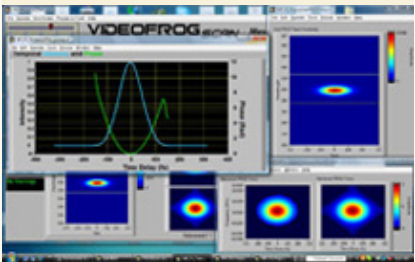
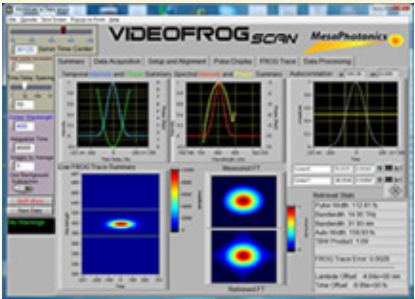
For ultrafast laser pulse measurement systems, the software is just as important as the hardware. VideoFROG Scan is the premier real-time FROG pulse measurement software available. It is easy to use, but still has all the features you need to make sure that your system is operating perfectly, and allows the FROG Scan to be interfaced directly to your experiment. We do not outsource our pulse measurement software in order to make sure that the software and the hardware remain tightly integrated. To top it off, VideoFROGscan is extermely robust, and can measure complex pulses easily.

View Video of VideoFROG Software in operation here.

The software not only must control the hardware, but must provide the user information digested for their unique application. The user must be able to easily control and evaluate the measurement process. With the summary panel of the VideoFROG scan software, those are the questions we want to answer. The convenient tabbed interface allows you to drill down and obtain more information. Both tip strips and context help is provided for each display and control–just pass the mouse over the item you want to know more about for the tip strip, and enable the context help in the main menu.

Using popups, you can easily zero in on information most pertinent to the problem at hand and customize the layout for your needs. You can move them to the front, rearrange them, resize them, and minimize them. Plots provide you with full control of how the results are displayed. You can display the temporal pulse shape at the same time that you have the pulse spectrum displayed. You can even zoom in on a temporal region of interest while you are monitoring the spectrum. Or, you can just simply monitor the pulse statistics.

Navigating the software is straightforward with the tabbed user interface. Its simple organization allows you to focus only on the information you need at the moment. The different sections each provide you with a unique view of the operation of your laser–whether it is just pulse width, pulse shape, spectral shape or width, or a view or the FROG trace itself. Cursors on the pulse display allow data analysis on monitoring on the fly. A zoom control allows you to select any region of the plot you need to see.



HOME

COMPANY

NEWS

PRODUCTS

TECHNOLOGY

SUPPORT

CONTACT

505.216.5015 info@mesaphotonics.com

Copyright 2020 - MESAPHOTONICS - All Rights Reserved Mesa Photonics, LLC 1550 Pacheco St. Santa Fe, NM 87505