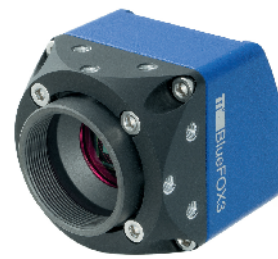


# mv BlueFOX3-2

## Technical Details



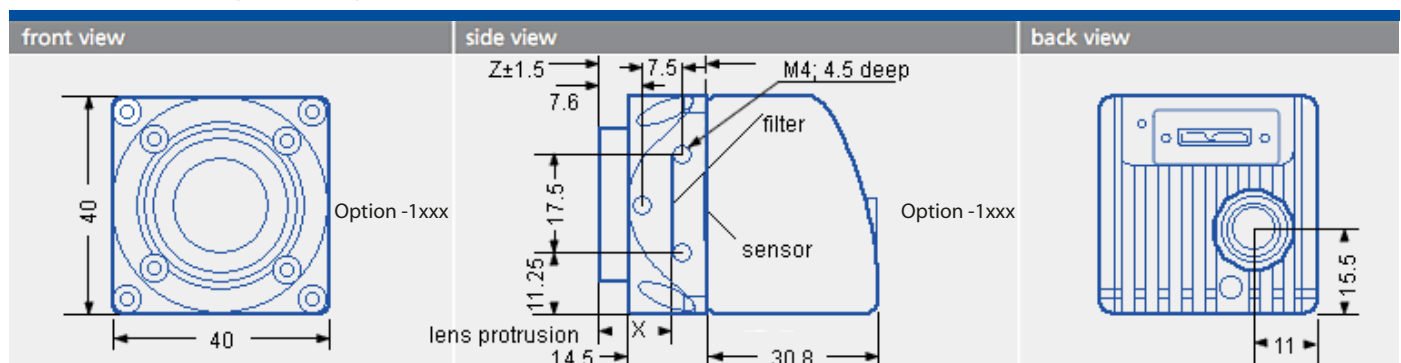
Sensors **Pregius** **STARVIS**

mvBlueFOX3		Resolution (H x V pixels)	Sensor size (optical)	Pixel size (µm)	Frame rate	Sensor technology	Readout type	ADC resolution / output in bits	Sensor
-2004	G/C	728 x 544	1/2.9"	6.9 x 6.9	436	CMOS	Global	10 / 12	Sony IMX287
-2016	G/C	1456 x 1088	1/2.9"	3.45 x 3.45	226.1	CMOS	Global	10 / 12	Sony IMX273
-2024	G/C	1936 x 1216	1/1.2"	5.86 x 5.86	164	CMOS	Global	10 / 12	Sony IMX174
-2024a	G/C	1936 x 1216	1/1.2"	5.86 x 5.86	41	CMOS	Global	10 / 12	Sony IMX249
-2032	G/C	2064 x 1544	1/1.8"	3.45 x 3.45	119	CMOS	Global	10 / 12	Sony IMX252
-2032a	G/C	2064 x 1544	1/1.8"	3.45 x 3.45	55	CMOS	Global	10 / 12	Sony IMX265
-2051	G/C	2464 x 2056	2/3"	3.45 x 3.45	75	CMOS	Global	10 / 12	Sony IMX250
-2051p	G/C	2464 x 2056	2/3"	3.45 x 3.45	75	CMOS	Global	10 / 12	Sony IMX250_POL
-2051a	G/C	2464 x 2056	2/3"	3.45 x 3.45	35.6	CMOS	Global	10 / 12	Sony IMX264
-2064	G/C	3096 x 2080	1/1.8"	2.4 x 2.4	50.1	CMOS	Rolling	10 / 12	Sony IMX178
-2089	G/C	4112 x 2176	1"	3.45 x 3.45	42	CMOS	Global	10 / 12	Sony IMX255
-2089a	G/C	4112 x 2176	1"	3.45 x 3.45	31.9	CMOS	Global	10 / 12	Sony IMX267
-2124	G/C	4112 x 3008	1.1"	3.45 x 3.45	31	CMOS	Global	10 / 12	Sony IMX253
-2124a	G/C	4112 x 3008	1.1"	3.45 x 3.45	23.2	CMOS	Global	10 / 12	Sony IMX304

## Hardware Features

Protocol	Compliant to USB3 Vision		
Interface	USB 2.0 / 3.0 (up to 480 Mbit/s / up to 5 Gbit/s)		
Image formats	Mono8/10/12/14/16 BayerGR8/10/12/16, RGB8Packed, BGR8Packed, BGRA8Packed, BGR10V2Packed, YUV422/444Packed, YUV422_YUYVPacked onboard color processing		
Triggers	External, software based or free run		
Size w/o lens (W x H x L)   Weight w/o lens	39.8 x 39.8 x 37.7 mm   approx. 94 g (option -2xxx) and 110 g (option -1xxx)		
Permissible ambient temperature	Operation:	0 .. 45 °C / 30 to 80 % RH	
	Storage:	-20 .. 60 °C / 20 to 90 % RH	
Lens mounts	C-mount (CS-mount as an option for option -2xxx)		
Digital I/Os	2 opto-isolated inputs / 4 opto-isolated outputs (freely configurable) as an option		
Image memory   Flash (firmware, calibration, user data)	256 MBytes   16 MBytes		
Conformity	CE, FCC, RoHS		
Driver	mvIMPACT Acquire SDK or any USB3 Vision compliant interface or vision library for Windows®, Linux® (32 bit & 64 bit)		
Special features	Burst mode, onboard color processing, Micro-PLC, single-board variant, frame average, robust housing with tripod mounting holes		

## Dimensions (in mm)



Option -1xxx: X = 10.7 mm with 1" lenses  
Z = 17.526 mm (C-mount)

**mv MATRIX VISION** MATRIX VISION GmbH  
Talstrasse 16  
71570 Oppenweiler  
Phone: +49-71 91-94 32-0  
Fax: +49-71 91-94 32-288  
info@matrix-vision.de

Recognize Analyze Decide