

USA1000



- Touch Screen operations
- Super Image Quality



KEY FEATURES

- Super image quality
- 7" TFT LCD
- 1m drop resistance
- 800x480 display resolution
- 640x480 video/photo resolution
- Rechargeable Li-battery for 3 hrs operation
- LED backlight function keys: ideal for dark environment operation
- Capacitive touch technology for best performance and durability
- USB reader: Simply connect to your PC to retrieve your data from the SD card, card reader is not necessary
- Neck/Hand strap: convenience and great for operation
- Light weight: only 1.3kg
- IP57 protection



Touch screen operation



Conventional screen / Full lamination touch screen

Can be operated under direct sunshine

APPLICATIONS



AVIATION



POWER GEN



PETROCHEMICAL



OIL & GAS



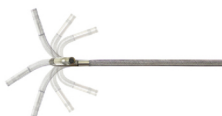
AUTO



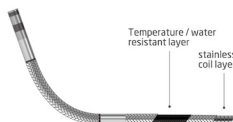
QUALITY



- Smooth and easy joystick operation -
- Brightness+, Brightness-, Snap / Recording
- IP55 protection



- 360° articulation
- Provide flexibilities in narrow space inspection



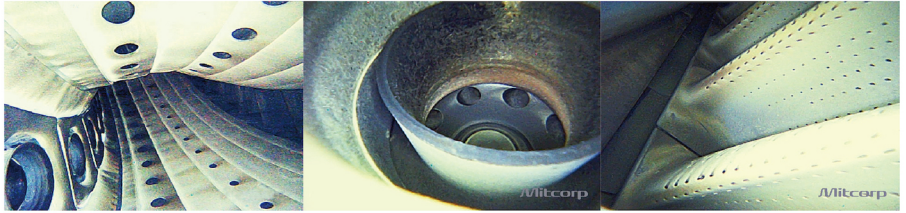
- High density stainless steel braided tube provide durability, flexibility and also rusty, water and temperature resistant

ENHANCED ILLUMINATION



Brightness Control

SUPER IMAGE QUALITY



Our outstanding image processing technology implementation to sharpen the edges and optimize the image quality for best inspection result

11 levels of light adjustments to different inspection conditions, the 5 basic levels works for most inspections; 6 advanced levels will expand the exposure time for extremely dark environment

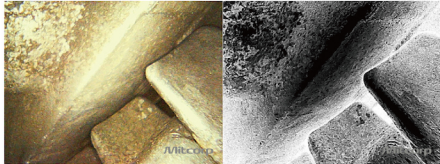
BOOST+

Ideals of extremely dark environment inspections



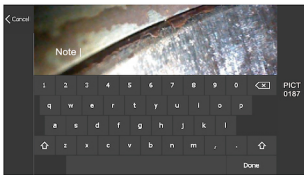
NEGATIVE+

Contrast enhancement to stand out cracks and details



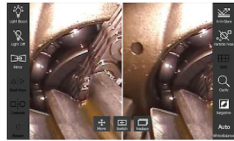
ADD NOTE

To put comparison information or comments on the captured image



COMPARE

The side-by-side comparison of a still image with the live view allows user to verify the difference of an area at different times



*You can adjust the stored image frame during your inspection on the screen

DUAL VIEWS

To see front view and side view simultaneously (designated mirror is need)



hyperion⁺

PARTICLE FREE - To eliminate the dust on the screen without cleaning the mirror.

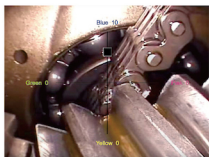


w/o Particle free

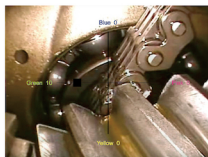
Particle free

WHITE BALANCE ADJUSTMENT

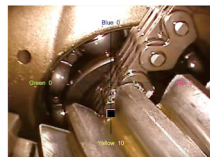
You can adjust white balance via operation interface



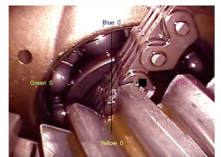
Blue



Green



Yellow



Pink

SPECIFICATIONS

USA1000 SYSTEM

Features	Description
LCD	7"LCD (800 x 480)
Snapshot	640 x 480, jpeg
Recording	640 x 480 , AVI (with audio)
Dimensions	240 x 154 x 47mm
System weight	1.3kg (2.86 lb)
Dust & Water proof	IP57
Drop resistance	1m
Battery	Rechargeable Li-Battery
Working temperature	0 ~ 60 °C
Storage temperature	0 ~ 60 °C
Charging temperature	10 ~ 60 °C
Relative humidity	Max 95% , non condensing
USB	Mass storage mode
Storage	SD card, up to 32G
AV output	NTSC / PAL
Audio input	Built-in microphone
Brightness Adjust	11 levels

PROBE OPTIONS

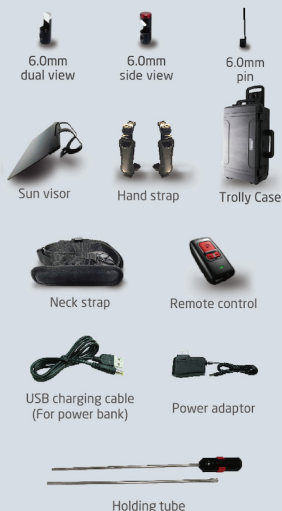
360 ARTICULATION TUBE

Features	Description
Probe head diameter	6.0mm (w/o lock ring)
Probe head length	24 mm
Probe length	2m, 3m, 5m, 7m
Weight	2m-720g, 3m-790g, 5m-930g, 7m-1070g
Articulation angle	2m, 3m: full ways $\geq 120^\circ$ 5m, 7m: full ways $\geq 80^\circ$
Probe head material	Stainless steel
Probe material	Outer braided stainless steel
Light source	Front / Side LEDs
FOV	87°
DOF	1cm ~ 6cm
Button	brightness+, brightness-, Snap / Recording
Articulation shaft lock	left-open, right-lock
Working temperature	-10°C ~ 60°C
Storage temperature	-10°C ~ 60°C
Resolution	640x480

* The maximum articulation angle may degrade over time.



ACCESSORIES



Also include: USB cable, AV cable, clean set, SD card, user manual, installation CD

4.5mm TWO WAYS ARTICULATION TUBE

Features	Description
Probe head diameter	4.5mm
Probe head length	13mm
Probe length	1.5m, 3m
Weight	1.5m-350g; 3m-490g
Articulation angle	right-left 180°
Probe head material	stainless steel
Probe material	outer braided stainless steel
Light source	Front LEDs
FOV	90°
DOF	1cm ~ 10cm
Button	Snap shot, Brightness+, Brightness-
Working temperature	-10°C ~ 60°C
Storage temperature	-10°C ~ 60°C
Resolution	640x480



PRM100 PIPE INSPECTION

Features	Description
Probe head diameter	10 mm (w/o mirr)
Probe head length	16.8 mm
Probe length	25m
Articulation angle	0°
Probe head material	stainless steel
Light source	Front / Side LEDs
FOV	87°
DOF	1cm ~ 10cm
Buttons (on the meter)	Power/Reset, m/ft counter, Backlight
Working temperature	-10°C ~ 60°C
Storage temperature	-10°C ~ 60°C
Resolution	640x480

