



Ultra compact. Ultra fast. Ultra-Light.

The Schilling diode lasers V40, V80, the fiber lasers F10, F20, M20 and F50 and the UV laser UV3 can be combined with the practical and modern Ultra-Light safety cabinet.

The basic scope of supply includes a laser source for marking large quantities, a laser safety cabinet with pneumatic safety door, an automatic z-axis, a large perforated plate and an embedded PC with marking software. Furthermore the scope of delivery includes an extraction system.



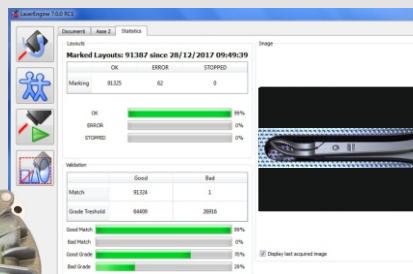
Due to its compact design the Ultra-Light marking lasers can be operated on a table or working bench. Moreover the Ultra-Light systems can be combined with robotic systems.





HIGHLIGHTS

- * Compact dimensions
- * Automatic door opening and closing
- * With extraction system for laser systems
- * Can be combined with robotic systems
- * Automatic z-axis
- * Complete set with embedded PC and marking software



APPLICATIONS

Automotive Industry

- * High contrast markings
- * Fast laser markings of codes for traceability
- * Easy automation possibilities

Aerospace Industry

- * High-contrast laser markings
- * Very fast coding and marking
- * Safe traceability

Packaging Industry

- * Marking and Reading of codes
- * Connection to data base systems
- * Flexible markings of dates, codes, continuous numbering

Medical and Pharmaceutical

- * Clean direct part markings
- * Fast and permanent direct part markings
- * No consumables necessary
- * No changes on the surface that can have an impact on the functionality of the parts



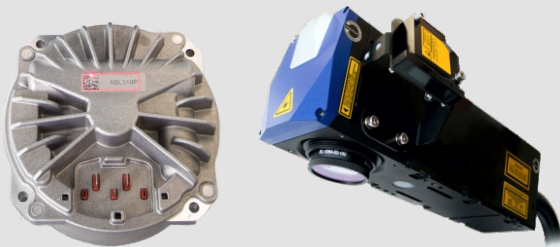


LASER MODEL	Ultra-Light V40	Ultra-Light V80	Ultra-Light UV3	Ultra-Light F10	Ultra-Light F20	Ultra-Light F50	Ultra-Light M20
Article Number	111.0042U.SET	113.0082U.SET	120.0004U.SET	122.1F10U.SET	123.1F20U.SET	125.1F50U.SET	123.1M20U.SET
Laser source	Nd:YVO4 (Vanadat)		UV-Laser	Fiber laser			Short pulse fiber laser
Wavelength	1064 nm		355 nm	1060-1080 nm			1050-1080 nm
Nominal power	10W	20W	3W	10W	20W	50W	20W
Repetition rate range	10-100kHz	20-100kHz	20-80kHz	20-200kHz			20-500kHz
Pulse width	100 ns						4 - 250 ns
Warranty	24 months on a new laser system						
Aiming & focus beam	Semiconductor laser (red) to display the size and position of marking job, second red pointer for focusing						
Marking capabilities	Static, On the Rotary, On the fly (in motion), Extended Layer on X-Y-Axes						
Fiber length	3 m						
Interfaces	Ethernet, RS-232, USB			6xUSB, 3x Ethernet, 1x RS-232, Digital I/O			
Power supply	24-28VDC			100-240VAC			
Power consumption	450W			250W			
Cooling system	Integrated air cooling						
	Objective different focal lengths (mm)						
Objective F-Theta	160S			254S			
Working distance	175±4			290±2			
Marking area	100x100			140x140			
Max. marking area	180x180						
	Overall dimensions (mm)						
Rack 19" with embedded PC	430x370x111			427x435x111			
Marking head	110x122x158			89x311x96			
Laser safety cabinet	780x790x1010						
Max. part size	535x272x210						
	Approx. Weight (kg)						
Rack 19"	12			16			
Marking head	3,8			2			
Laser safety cabinet	115						
	Protection class						
Rack 19"	IP20			IP 21			
Marking head	IP 54			IP64			
Laser safety cabinet	Laser safety class 1						
	Environmental						
Operating temperature	Min. -5°C (23°F) / Max. 35°C (95°F)			Min. 5°C (41°F) / Max. 42°C (108°F)			
Humidity	< 70 %			< 90 %		< 80 %	< 90 %
Operating altitude	< 2000 m						
Vibrations	Not permitted						
Max. acceleration	0,5 G						
Noise	< 70 dB						
Storage temperature	Min. -5°C (23°F) / Max. 55°C (131°F)			Min. -10°C (14°F) / Max. +60°C (140°F)			
Conformance to EU Machinery directives	2006/42/EG Machinery Directive 2014/30/EU Electromagnetic Tension 2014/35/EU Low Voltage Directive						
Conformance to EU Standards	EN 60825-1:2015-07 Safety of Lasers EN ISO 13849-1:2011-03 Safety of Machinery EN ISO 12100:2011-03 Safety of Machinery EN 61000-6-4:2011-09 Electromagnetic Compatibility						
NOTE:	Specifications are subject to change without notice						



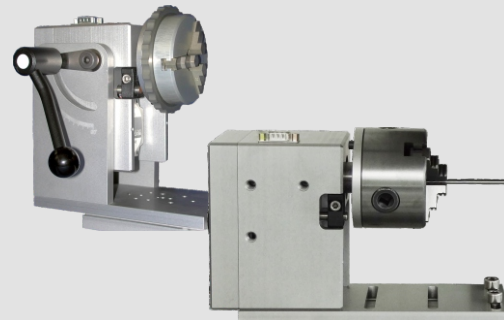
Focus Finder

- * Automatic focusing
- * Mounting directly on laser head



Rotary axes

- * Laser markings on 360°
- * Easy and fast retrofitting



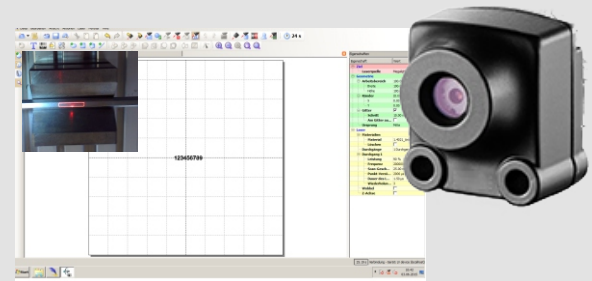
Hand scanners

- * Fast reading of codes
- * Wireless hand scanners available
- * Integrated illumination



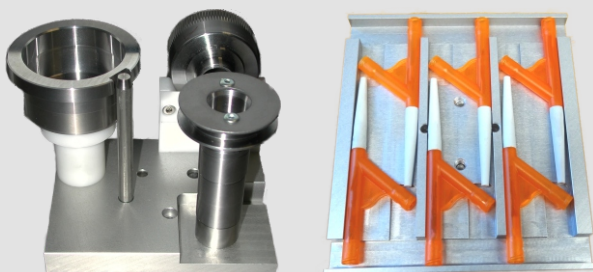
Camera

- * Live position displaying
- * Perfect for positioning on high parts



Fixtures

- * Increase in process reliability
- * Optionally available with RFID technology



Code inspection system VISION

- * Mark, Read and recording of marked codes
- * With grading function

