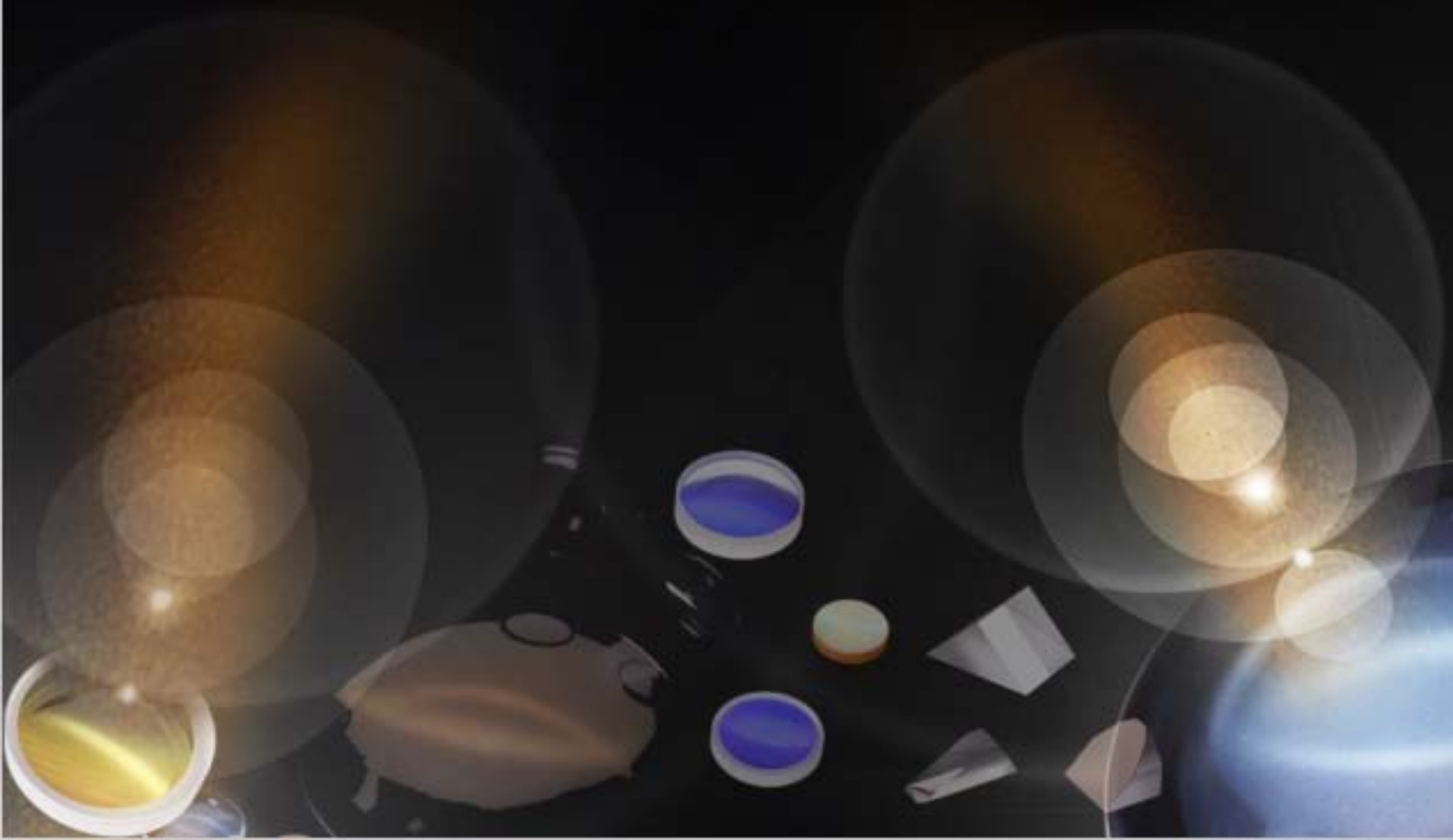


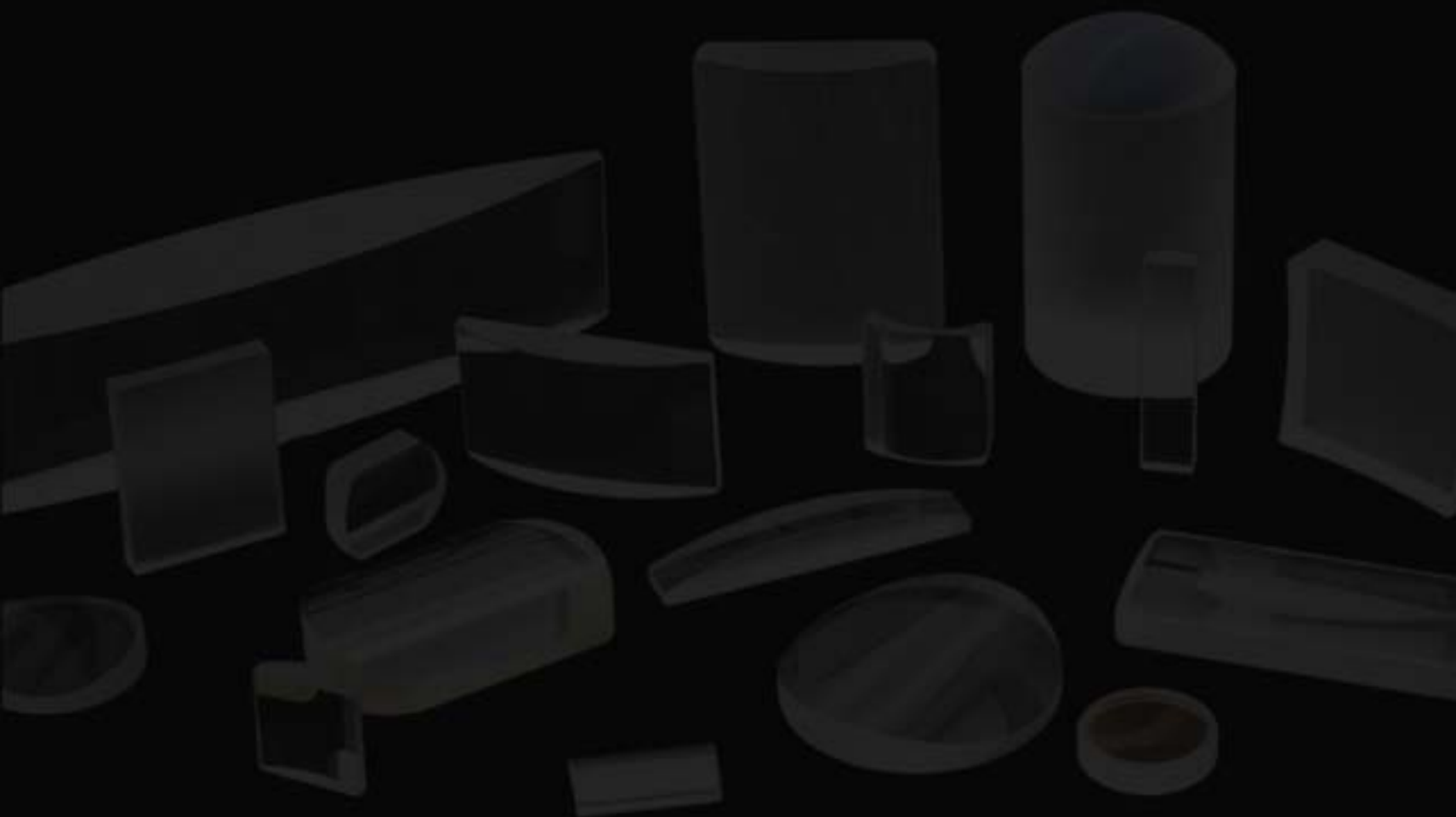


sun optics

Components & Assemblies

Optical Design & Manufacturing





- Windows
- Mirrors
- Filters
- Lenses
- Prisms
- Beam Splitters
- Laser Optics
- Cylindrical Surfaces
- Aspherics Surfaces
- Crystal Optics
- UV-IR Optics



Address: Kuancheng District Changchun City China

Tel: + 86(0)431 81679045

Fax: + 86(0)431 8930 8911

Email: sales@sun-optics.com www.sun-optics.com

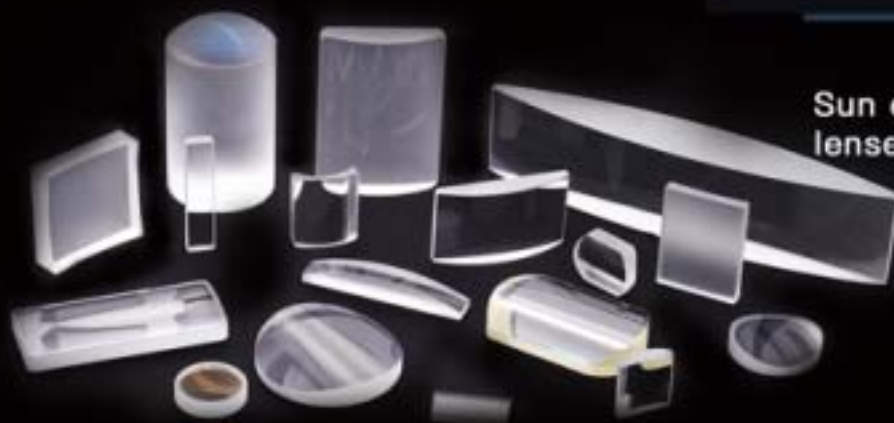
LENSES

Sun optics custom made to your specifications .
Lenses and Micro Lenses .Singlets, Doublets, Triplets



Material	BK7 or Fused Silica B270 or PYREX Ge,Si,ZnSe Crystal
Forms	<ul style="list-style-type: none">• Plano Convex lens• Double convex lens• Plano concave lens• Double concave lens• Meniscus Lens• Achromat Lens• Rod lens• Aspherical Lens
Focal Length Tolerance	$\pm 0.03 - \pm 0.2$
Surface Irregularity	$\lambda / 4$
Surface Quality	60/40 40/20 20/10 10/5
Centration	1' -3'
Diameter Tolerance	± 0.01 mm
Thickness Tolerance	± 0.01 mm
Clear Aperture	>90%
Coating	Coatings are available on request

CYLINDRICAL LENSES



Sun optics custom all types of cylindrical
lenses upon your choosing

PRISMS

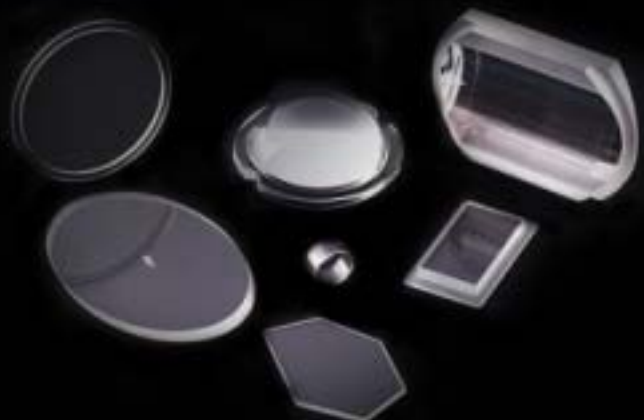
Sun optics offers three different quality standards: Standard Grade, High Grade and Laser Grade.



Material	BK7 grade Optical glass
Forms	<ul style="list-style-type: none">• Roof prism• Right Angle Prism• Half Pentagonal prism• penta prism• Corner Cube Prism• Dove Prism• Paul prism• Rhombic Prism• Equilateral Prism• Beamsplitter Penta Prism• Wedge Prism
Diameter Tolerance	$\pm 0.01\text{mm}$
Clear Aperture	$> 95\%$
Angle Tolerance	$1' - 3'$
Surface Quality	60/40 40/20 20/10
Protective Bevel	$< 0.25 \text{ mm} \times 45^\circ$
Fletness	$\lambda / 4$

ATYPICALLY SHAPED PARTS

These components are quite peculiar, They are not the same as the ordinary parts. So we called them atypical parts.





ASSEMBLY SERIES

Beam Expanders, CO2 Field lens, Focusing lens, Scanner lens ,
Laser lens, CCD lens.

Application: Endoscope, Special monitoring, Stage lighting, Laser.

BALL LENSES

Sun optics offers standard size ball lenses range from 1.0mm to 700mm. Custom made sizes or special materials are also available

Material	BK7 grade A, B270, UV grade Fused Silica, Sapphire etc.
Diameter Tolerance	± 0.05 mm (Standard), up to $+0.000/-0.002$ mm
Sphericity	± 0.005 mm (Standard), up to ± 0.6 μ m
Surface Quality	60-40 S/D (Standard), up to 20-10 S/D

