



We manufacture lenses, prisms, mirrors, flat optics, filters as well as special optics according to your requirements.

We take over or support you with the design and construction of your components, but also can offer you a variety of components from stock, subject to prior sales.

From the prototype to the serial production we use all kinds of mineral glass including quartz. The components are manufactured exclusively in our factory, including the coating and fine cementing.

Before the distribution to our customers, all our products undergo a strict and comprehensive final inspection.



Lenses

- plano-convex
- plano-concave
- bi-convex
- bi-concave
- meniscus



READ MORE 

Mirrors

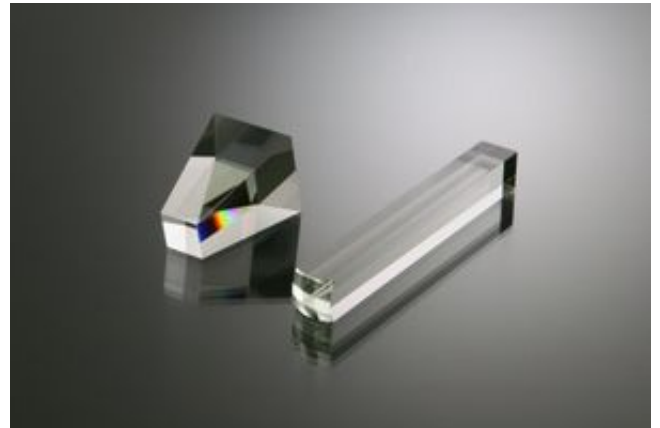
- plano mirror
- spherical mirror



READ MORE 

Plano Optics

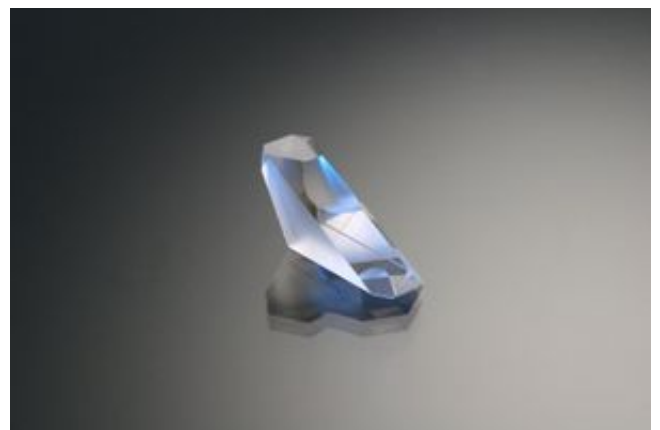
- Plano-parallel plates
- Wedges
- Diffusors



READ MORE 

Prisms

- Reflective prisms
- dispersive prisms



READ MORE 

Beam Splitters

- Beam splitter plates
- Beam splitter cubes



READ MORE 

Filters

- Band pass filters
- Long pass filters
- Short pass filters
- Neutral density filters
- Conversion filters



**Dimensions**

- diameter 3 – 120 mm
- edge length 3 – 100 mm

Forms of supply

- spherical
- angular
- elliptical

We shall be glad to submit a quotation for other forms or special dielectric filters.

CLOSE 

Silicon

Lenses and prisms made from silicon applicable in the field of infrared.

Let us know the specification of the lenses or prisms you need and we'll be glad to send you our quotation.

