

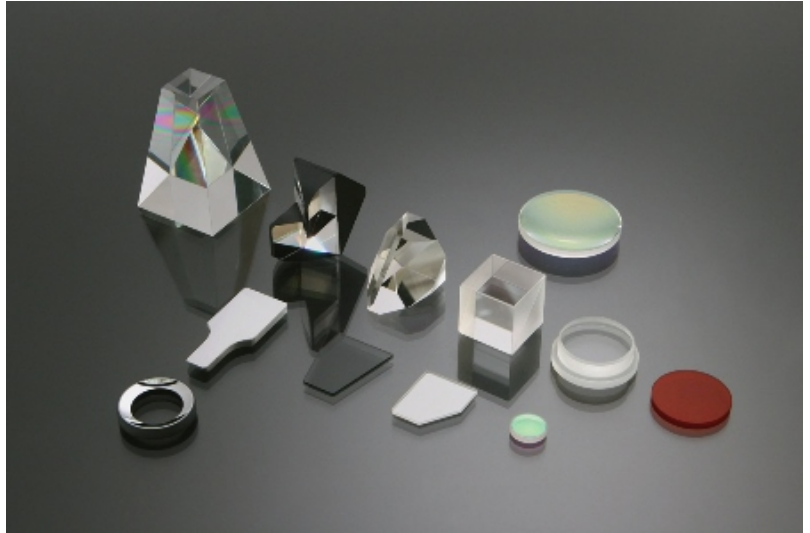


We manufacture lenses, prisms, mirrors, flat optics, filters as well as special optics according to your requirements.

We take over or support you with the design and construction of your components, but also can offer you a variety of components from stock, subject to prior sales.

From the prototype to the serial production we use all kinds of mineral glass including quartz. The components are manufactured exclusively in our factory, including the coating and fine cementing.

Before the distribution to our customers, all our products undergo a strict and comprehensive final inspection.



## Lenses

- plano-convex
- plano-concave
- bi-convex
- bi-concave
- meniscus



READ MORE 

# Mirrors

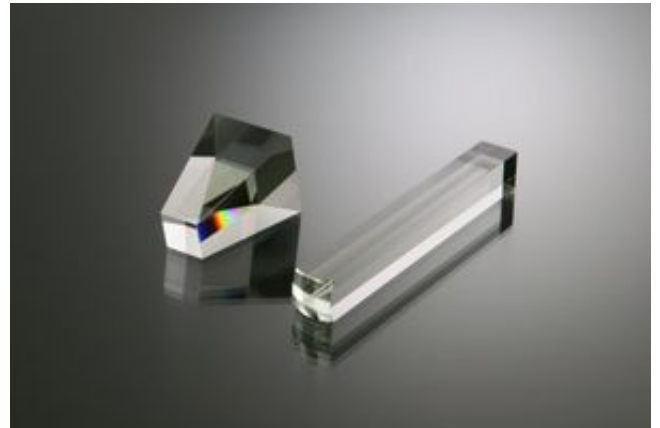
- plano mirror
- spherical mirror



[READ MORE](#) ▼

# Plano Optics

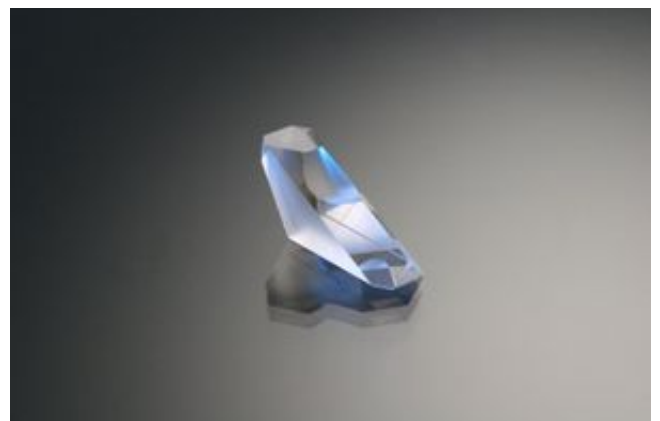
- Plano-parallel plates
- Wedges
- Diffusors



[READ MORE](#) ▼

# Prisms

- Reflective prisms
- dispersive prisms



[READ MORE](#) ▼

# Beam Splitters

- Beam splitter plates
- Beam splitter cubes



## Dimensions

- diameter 3 – 120 mm
- edge length 3 – 100 mm

## Forms of supply

- spherical
- angular
- elliptical

We shall be glad to submit a quotation for other forms according to customers' needs.

## Coating

The standard splitting ranges of our components are:

- R/T = 30/70
- R/T = 50/50
- R/T = 70/30

Other splitting ranges on request.



CLOSE 

# Filters

- Band pass filters
- Long pass filters
- Short pass filters
- Neutral density filters
- Conversion filters

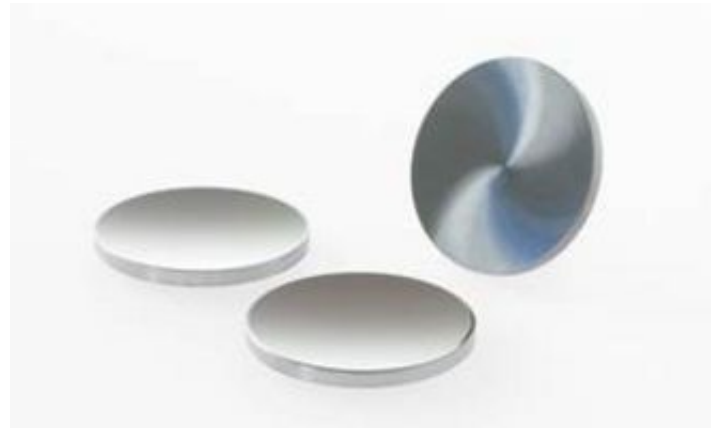


[READ MORE](#) ▼

# Silicon

Lenses and prisms made from silicon applicable in the field of infrared.

Let us know the specification of the lenses or prisms you need and we'll be glad to send you our quotation.



---

© HAAG-STREIT GROUP