



VACANCIES ▾

ABOUT US

CLIENTS

NEWS ▾

EVENTS

CONTACT

REGISTER

# Specialists In Technical Recruitment

Here at Advanced Technical Recruitment we specialise in recruiting for a wide range of technical positions from graduate to director level.

job title, keywords or company name

city, province or region



SEARCH JOBS



## Our Latest Vacancies

Product Engineer –  
LM1053

Location: Hertfordshire, UK

APPLY FOR THIS JOB

Product Line Engineer –  
LM1052

Location: York, UK

APPLY FOR THIS JOB

High Energy Laser Lead –  
LM1051

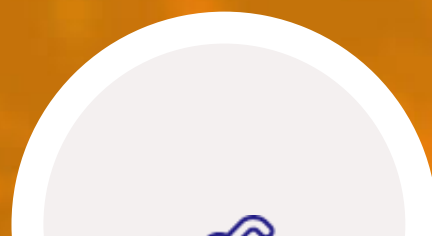
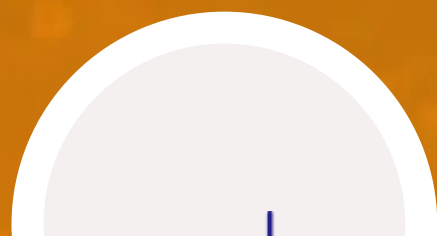
Location: Bristol, UK

APPLY FOR THIS JOB

Privacy and Cookies Policy



## Our Specialists Sectors





Electronics &  
Software

SEE JOBS



Manufacturing  
& Automation

SEE JOBS



Mechanical  
Design

SEE JOBS



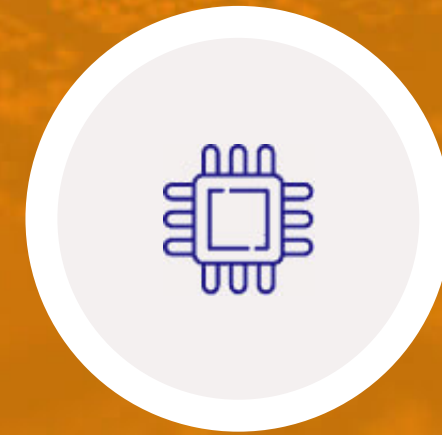
Photonics &  
Optics

SEE JOBS



Sales,  
Services &  
Support

SEE JOBS



UHV &  
Semiconductor

SEE JOBS

# Testimonials



Advanced have provided us with a professional recruitment service, and have shown an excellent understanding of both the industry and our specific requirements. We look forward to working with them in the future.

MD – Precision Optics



## Upload your CV

---

Register an account with Advanced Technical Recruitment to hear about the most relevant vacancies for you.

REGISTER YOUR CV

Subscribe to our Newsletter

Recent Posts

Fields marked with an \* are required

Your Name...\*

Your Email...\*

Agree with [Privacy Policy](#) \*

SUBSCRIBE

Update on Coronavirus (COVID-19)

[Read More >](#)

Apprentice of the Year 2020

[Read More >](#)

Advanced Welcome's James!

[Read More >](#)



Follow us on Twitter

@ATR\_Recruitment



Follow us on LinkedIn

/advanced-technical-recruitment

ADVANCED TECHNICAL  
RECRUITMENT

27 PALACE AVENUE, PAIGNTON,  
DEVON, TQ3 3EQ

TEL: [+44 \(0\) 1803 290333](tel:+44(0)1803290333)

EMAIL: [jobs@at-recruitment.co.uk](mailto:jobs@at-recruitment.co.uk)

VACANCIES

ABOUT US

CLIENTS

NEWS

CONTACT

PRIVACY POLICY

COOKIES POLICY

TERMS & CONDITIONS

