

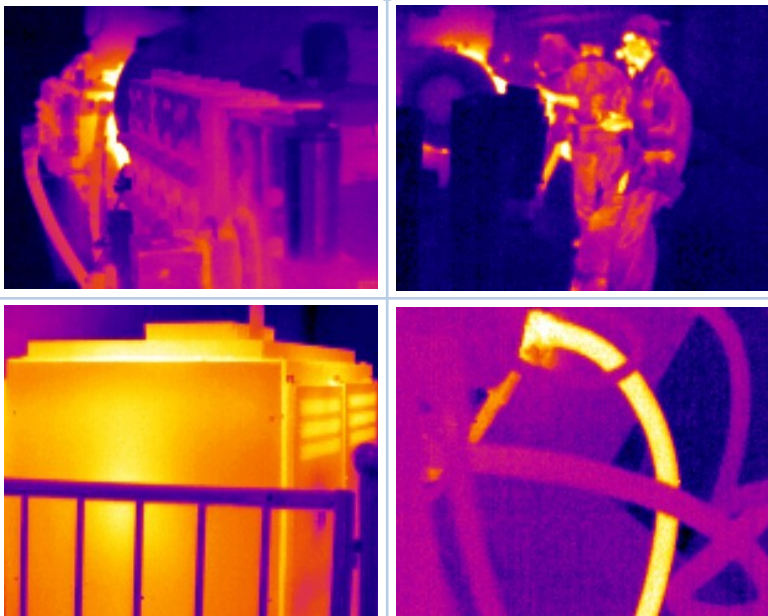


SATIR YRH Series

IR Camera specifically designed for coal mining

SATIR YRH Series are professional infrared camera specifically designed for the coal mining industry. The housing of the YRH Series are made by reinforced industrial strength plastic which strengthens the ex-proof ability of the camera, but keep it lightweight. Internal PCBS have gone through insulation processing. Special ex-proof batteries are provided to make sure the YRH Series strictly complies with the requirements for coal-mining.

SATIR thermal cameras have been used for many years in a wide range of applications across many industrial sectors. We believe their should be a thermal camera to meet your thermal imaging needs and that is why we are leading the way in thermal imaging.



Features

- Several Approved Certificates
- Precise temperature measuring
- Robust design for extreme working condition, IP54 Encapsulation
- Unique Duo Display keeps you informed with the status
- Easy to use

Marley's Business Park, Marley's Lane, Drogheda, Co. Louth, Ireland

Tel: + 353 (41) 9846786

Email: enquiry@satir.com

Website: www.satir.com

Camera Name	YRH600
Resolution	160X120
Thermal Sensitivity (N.E.T.D)	$\leq 0.08^{\circ}\text{C}$ @ 30°C
Detector Type	FPA, uncooled microbolometer
Spectral Range	8-14 μm
Focus Mechanism	Manual
Measurement	
Temperature Range	-20°C + 250°C (Up to 1500°C Optional)
Accuracy	$\pm 2^{\circ}\text{C}$ or $\pm 2\%$ of Readings
Measurement Tools	9 movable spots, auto hot/cold spot, isotherm
Temperature Alarms	Yes
Measurement Corrections	Emissivity, Ambient Temperature, Distance, Relative Humidity
Environmental	
Operating	-20°C + 50°C
Storage	-40°C + 70°C
Humidity	10%~ 95%, non-condensing
Encapsulation	IP54
Physical Characteristics (Camera Body)	
Weight	Less than 600g
Dimensions	211mmX80mmX219mm
Interfaces	
Power Input	DC 8V-11V
Video Output	NTSC (60Hz) or PAL (50Hz) composite video
Optional Parts	
Available Optional Lenses	6.4°, 9°, 12°, 38°

Please be aware specifications can vary from time to time

Marley's Business Park, Marley's Lane, Drogheda, Co. Louth, Ireland

Tel: + 353 (41) 9846786

Email: enquiry@satir.com

Website: www.satir.com