

Rainbow 2000

2 μm Ultrafast Fiber Laser

For scientific research and industrial OEM

Features

- High peak power
- Customized wavelength
- Diffraction limited beam
- Turn-key system

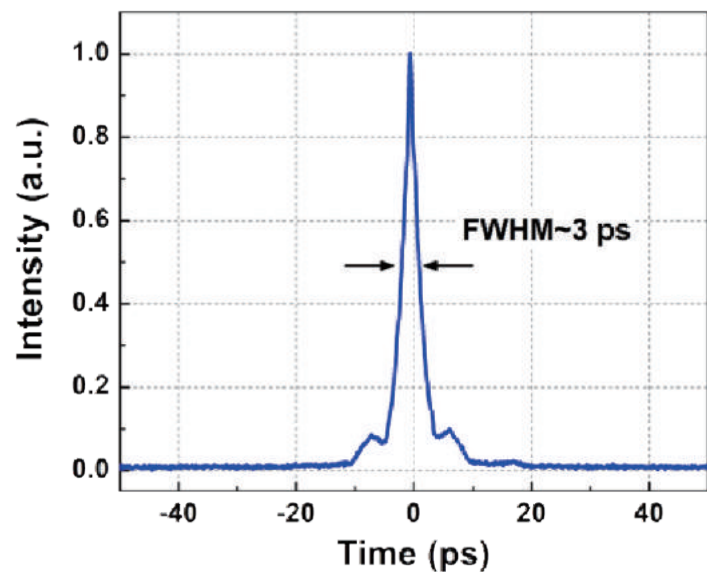


Applications

- Mid-infrared frequency conversion
- Nonlinear optics
- Mid-IR spectroscopy
- Silicon photonics

Measurement Data

Typical autocorrelation trace



Technical Specifications

Parameter	Performance
Operating Wavelength	1960 ± 20 nm
Pulse Duration	<3 ps
Average Output Power	1 W (standard) , 3 W (optional)
Repetition Rate	20-40 MHz (optional)
Peak Power	>50 kW
Operating Temperature	15 to 35 °C
Power Requirement	AC 100-240 V (50 Hz/60 Hz)
Dimensions	392 mm x 298 mm x 115 mm
Weight	17 kg
Output Power Type	Armored cable

1. Other performance indicators (wavelength, power, pulse duration, repetition rate, etc.) can be customized.

Mechanical Dimensions

