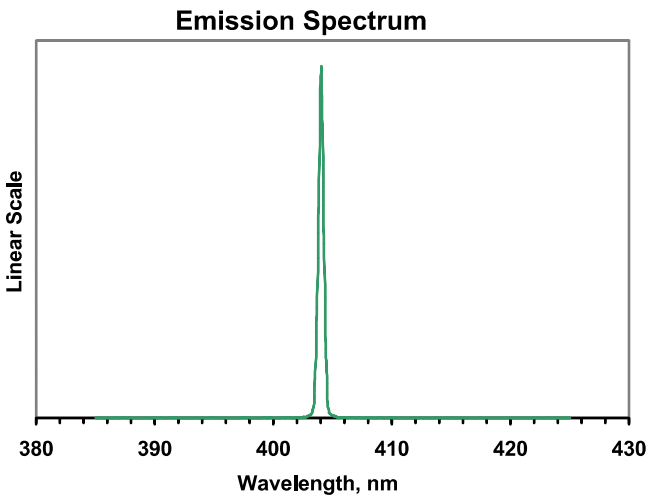
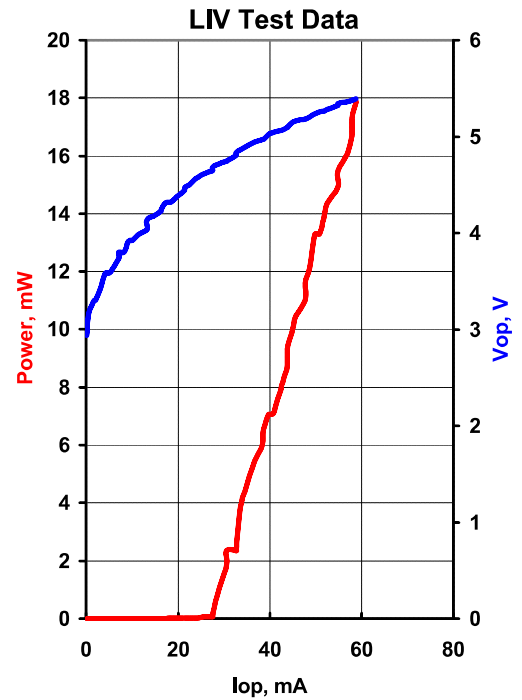


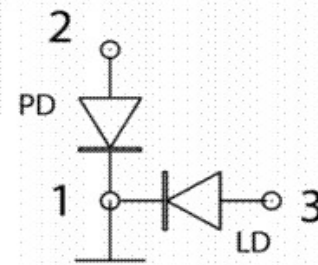


MODEL	QFLD-405-10SAX
PART NUMBER	SAMPLE

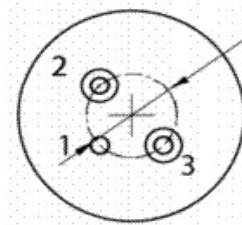
Parameter	Value	Units
Internal Temperature	25	°C
Thermistor Resistance	10.0	k?
Optical Output Power	10.4	mW
Threshold Current	27	mA
Operating Current	45	mA
Maximum Operating Current	50	mA
Operating Voltage	5.11	V
Monitor Current	0.94	mA
Center Wavelength	404	nm
Spectral Width	0.49	nm



Fiber Type	S405-XP
NA	0.14
Connector	



Pin	Connection
1	LD Cathode, PD Cathode
2	PD Anode
3	LD Anode



Operator	
Date	

BOTTOM VIEW