



PROVIDERS OF LASER
COMPONENTS AND LASER
RELATED ACCESSORIES

[HOME](#) [ABOUT US](#) [CUSTOMER SERVICE](#) [CONTACT US](#)

[MY CART](#)

Order Online or Call Toll Free
1.800.443.5561

Enter your keywords...

SEARCH

- [Laser Accessories](#)
- [Laser Component Catalogs On-Line](#)
- [Laser Lamps](#)
- [Diode Pumped Laser Repair](#)
- [Yag Rod Refurbishing & Optical Repair](#)
- [Custom Laser Optics, Lenses, & Laser Flow Tubes](#)
- [Q-Switches for Lasers](#)
- [Metal Tags & Plastic Tags](#)
- [Laser Marking, Engraving, & Dye Sublimation](#)
- [Glossary of products](#)

[Home](#) [Q-Switches for Lasers](#) [Q-Switch 27MHz, 3mm Shear, Barbed Fittings](#)

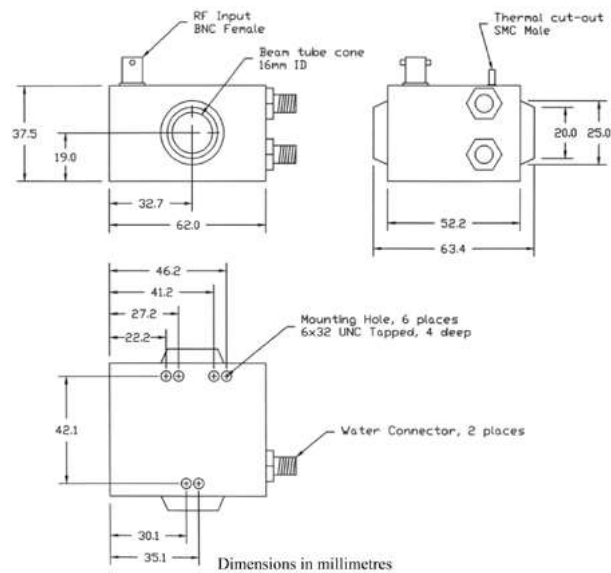
Q-SWITCH 27MHZ, 3MM SHEAR, BARBED FITTINGS

Please call for information and availability.

Q-Switch Specifications

| | |
|-----------------------------------|--|
| Interacton Material : | Fused Silica |
| Wavelength : | 1047 to 1064nm |
| Anti-Reflection Coating : | < 0.2% per surface |
| Damage Threshold : | > 1GW/cm2 |
| Transmission (single pass) : | > 99.6% |
| Frequencies Available : | 27.12Mhz |
| VSWR : | < 1.2:1 (50 ohm imput impedance) |
| Active Apertures Available : | 3mm, 4mm, 5mm, and 6.5mm |
| Clear Aperature : | 6.5mm |
| Window diameter : | 15mm |
| Mounting Options : | 6-32 or M3 tapped holes, 4mm deep |
| Acoustic Mode : | Shear or Compression (Longitudinal) |
| Rise-Time / Fall - Time : | 173ns/mm (shear) |
| RF Power Rating : | 15W - 100W C.W. |
| RF Input Connector : | BNC - Female (SMC - Male Available) |
| Water Flow Rate : | 0.2 Ltr/Minute, Minimum |
| Maximum Water Temperature : | +40°C (recommended, 22°C to 32°C), a few degrees above room temp. to prevent condensation. |
| Water Connectors : | Barbed Fitting |
| Thermal cut-off connection : | SMC - Male |
| Housing / Flow Chamber Material : | Aluminum |

Mechanical Specifications



Do you need?



Q Switch Over Heat Cable
25 feet long, 50 Ohms.

Question?

NEED HELP?

[CLICK HERE](#)

Enter your email address

SUBMIT

[Home](#) [About Us](#) [Privacy Policy](#) [Customer Service](#) [Contact Us](#) [Site Map](#) [View Shopping Cart](#)

Copyright 2019 © Cascade Laser Corporation. All Rights Reserved.

101 N Elliott Rd. Newberg, OR 97132 U.S.A.

Email: info@cascadelaser.com Phone: (503) 554-1926 Fax: (503) 554-8285 Toll Free: (800) 443-5561 (USA ONLY)