



PRODUCTS SERVICE COMPANY CONTACT

PLS SERIES LASERS

PLS SERIES 2500/3000/3300/4000-WATT LASERS FROM PRC FEATURE A COMPACT DESIGN PERFECT FOR DIRECT INTEGRATION TO CUTTING MACHINES AND WELDING WORK CELLS. GREAT FOR LASER RETROFITS ON FIXED OR MOVING SYSTEMS. THIS STATE-OF-THE-ART CO2 LASER BOASTS A DISCHARGE EFFICIENCY OF UP TO 25% AND LOW GAS CONSUMPTION OF ONLY 10-25 LITERS PER HOUR.

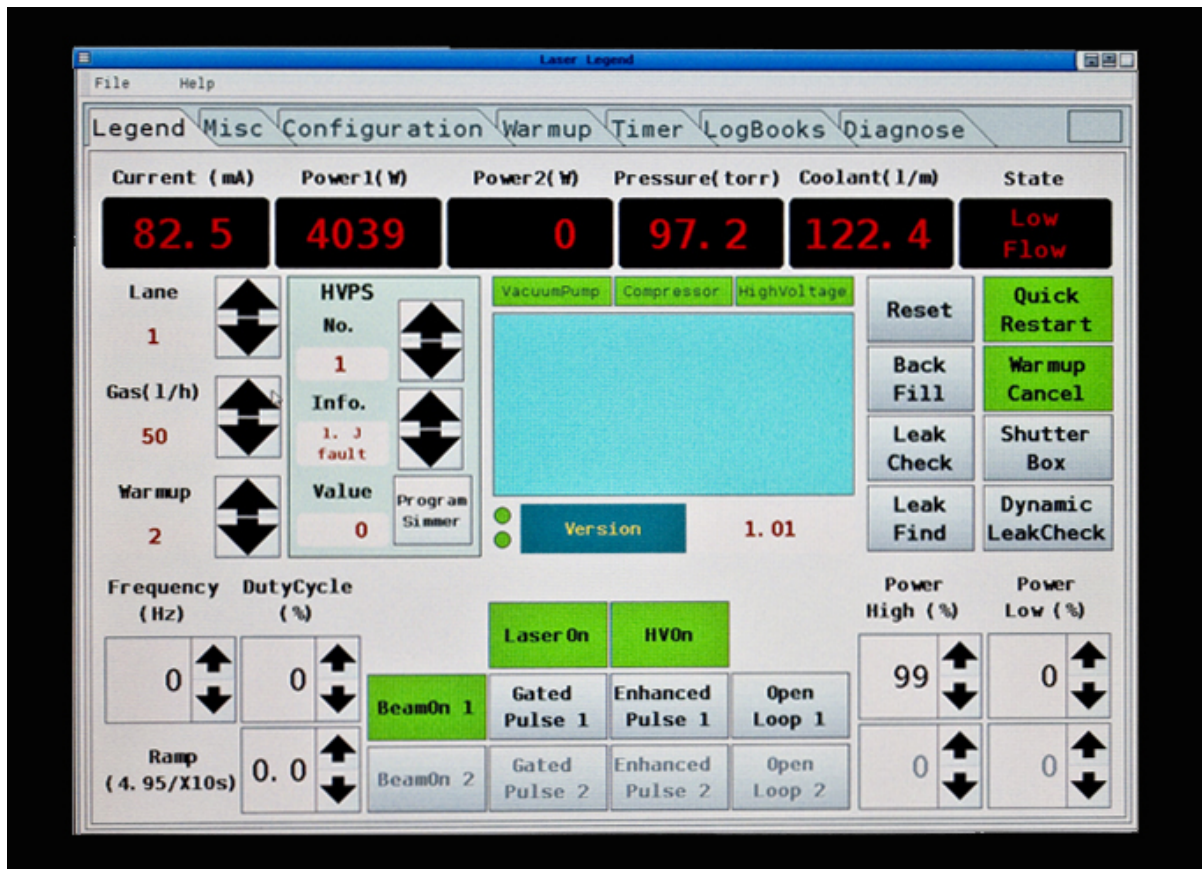
FEATURES

- Compact single enclosure laser
- Patented TURBO FLOW compressor
- Solid state high voltage power supplies
- Low gas consumption, based on PRC GEM technology
- Touch screen control and diagnostics
- M² as low as 1.3 (K factor .77)
- Eye-safe 10.6 Micron standard, other wavelengths available

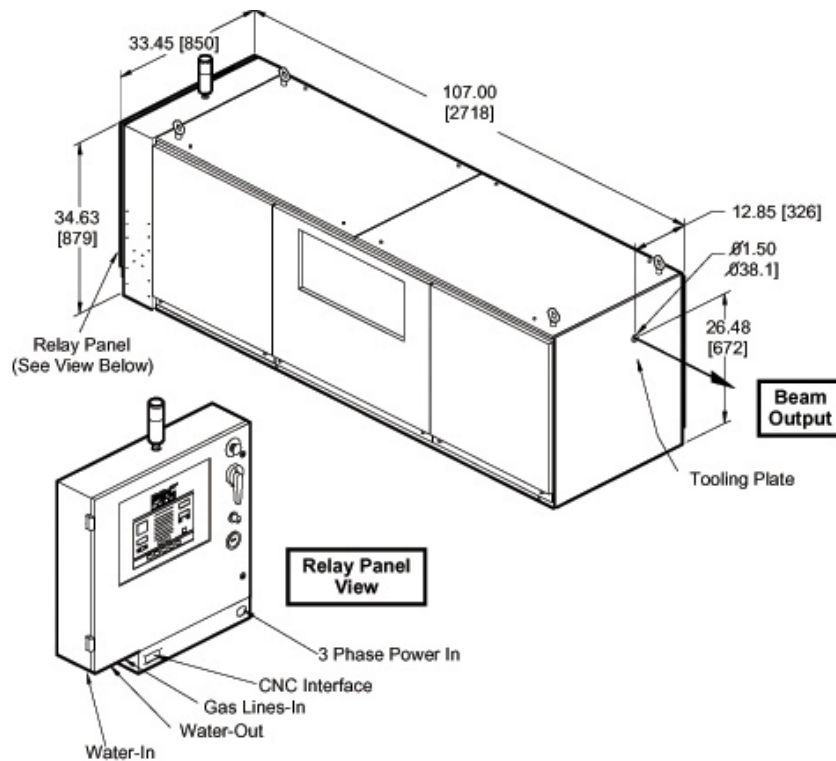


TOUCH SCREEN STATUS, CONTROL & DIAGNOSTIC PANEL

PRC's optional touchscreen control provides laser status information and fault displays. In addition the control offers automated test routines, input /output diagnostic information, maintenance logbook, and can control power and pulsing parameters for basic laser applications.



PLAN VIEW



SPECIFICATIONS

	PLS 2500	PLS 3000	PLS 3300	PLS 4000
Rated Power (CW)	2500 Watts	3000 Watts	3300 Watts	4000 Watts

Peak Power (Pulse)	6250 Watts	7500 Watts	8250 Watts	10000 Watts
Operating Costs	\$3.89/hr	\$4.18/hr	\$4.47/hr	\$5.87/hr
Gas Consumption	10L/hr <i>(China 25L/hr)</i>		25L/hr	
>Beam Mode	TEM 00 or D Mode		Q Mode	
Beam Quality (M ²)	1.3 or 2.0		3.0	
Heat Load	89,320 BTU/hr	95,771 BTU/hr	103,383 BTU/hr	119,420 BTU/hr
Coolant Flow	18GPM / 68LPM		20GPM / 76LPM	
Pulse Frequency				
Gated Pulse	CW - 5kHz			
Superpulse	CW - 1kHz			
Hyperpulse	CW - 1kHz			
Electrical				
Volts/Hertz	460V/60Hz, 420V/50/60Hz, 380V/50/60Hz			
KvA (@110% CW Power)	29.6	33	35	44.6
Cut Capacity				
Steel	0.625" / 16mm	0.75" / 20mm	0.75" / 20mm	1.0" / 25mm
Stainless Steel	0.375" / 10mm	0.4375" / 11mm	0.5" / 12mm	0.75" / 20mm
Aluminum	0.25" / 6mm	0.3325" / 8mm	0.375" / 10mm	0.5" / 12mm