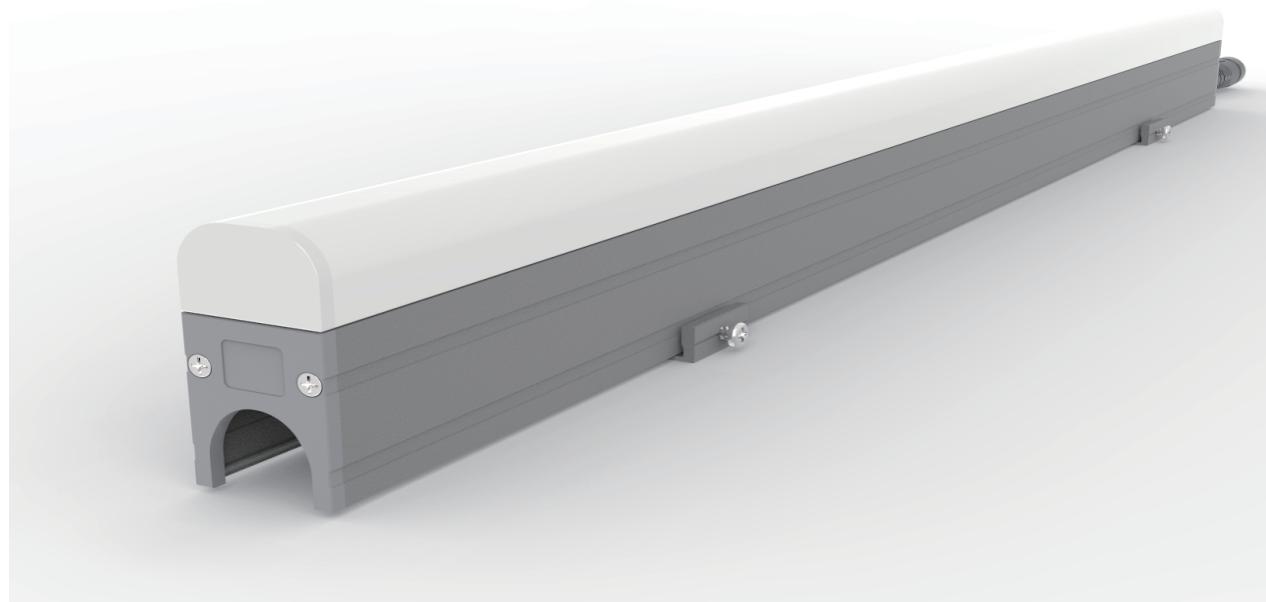


## SLB030



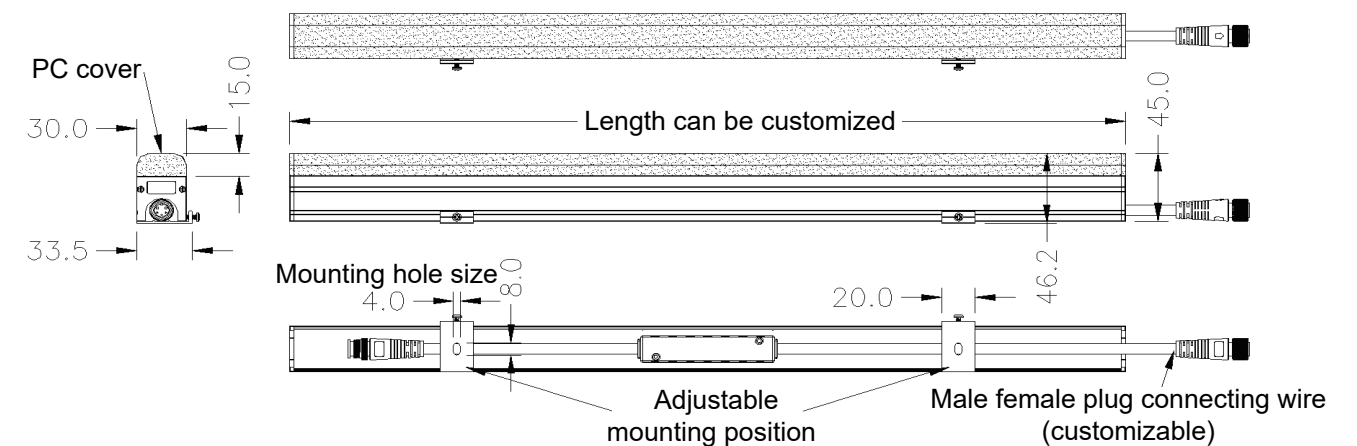
### Features

- ★ Standard DMX512 control protocol/ Dual channel real-time backup TTL
- ★ Built-in anti-pull connection design for waterproof connector
- ★ High thermal conductivity adhesive, fully potted and waterproof design
- ★ Special protection design for outdoor lightning protection and static electricity (ESD)
- ★ Product flexibility, wide application, multiple installation methods
- ★ Professional optical design, fine and uniform light mixing, seamless splicing, no dark areas
- ★ Support RGB/W current individually adjustable (low brightness and high gray)

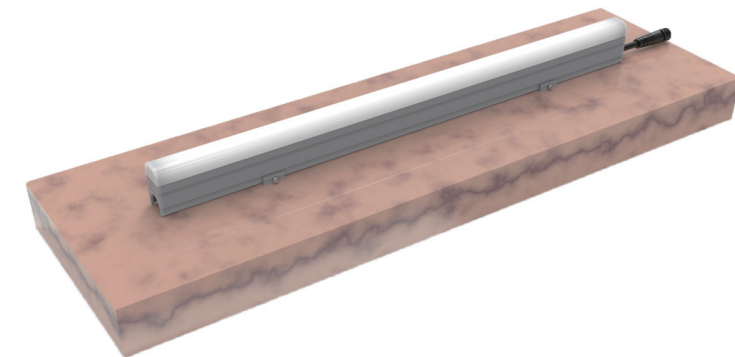
### Description

SLB030 linear light is a low-power LED strip product specially designed for outdoor landscape lighting. Adopt high thermal conductivity extruded aluminum shell, flame-retardant plastic PC end cover, and waterproof with high thermal conductivity and weather-resistant PU glue; small size of the light bar, exquisite appearance; connection between the light bars through the national standard customized flexible cable; product length and color can be customized, Can adapt to the installation of large curves or curved surfaces; suitable for contouring of building facades, and decorative and brightening of internal and external surfaces.

### Product Size



### Installation



### Parameters

Color temperature: RGB/W	Voltage: DC24V
Gray level: 256 level/65536 level	Maximum power: 12W/15W/19W
LED type: 3535/5050/2835	Working temperature: -20°C to 50°C
LED Qty: 48 or 60pcs/m	Storage temperature: -20°C to 60°C
Shell material: high thermal conductivity aluminum+flame retardant PC	Protection level: IP66
Beam angle: 160°	Service life: 50,000 hours

### Model No.

Item No.	LED Qty	LED type	Color temperature	Control way	Voltage	Power	Brightness
SLB030-48CN	48pcs	2835	R/G/B/W	Single color	DC24V	12W	960 LM
SLB030-48CU	48pcs	2835	R/G/B/W	Break continue TTL	DC24V	12W	960 LM
SLB030-48CD	48pcs	2835	R/G/B/W	DMX512	DC24V	12W	960 LM
SLB030-48BU	48pcs	5050	RGB	Break continue TTL	DC24V	12W	240 LM
SLB030-48XT	48pcs	5050	RGBW	TTL	DC24V	15W	480 LM
SLB030-48BD	48pcs	5050	RGB	Break continue TTL	DC24V	12W	240 LM
SLB030-48XD	48pcs	5050	RGBW	DMX512	DC24V	15W	480 LM
SLB030-60XD	60pcs	5050	RGBW	DMX512	DC24V	19W	400 LM