

Opera CARS laser source

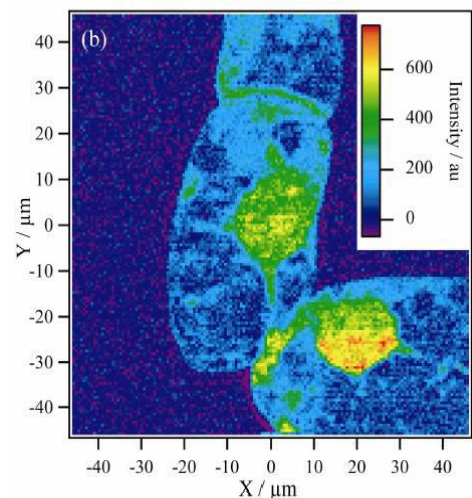
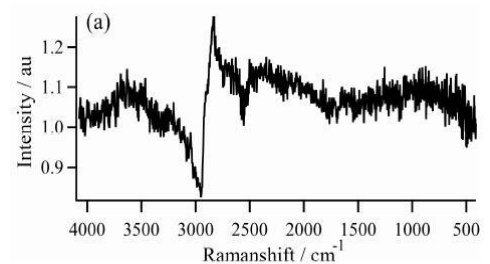
The Opera series is a laser dedicated to CARS applications. This solution combines the performances of a sub-nanosecond narrow linewidth laser with a broadband emission of an all-fibered supercontinuum, ensuring a reliable, compact and cost-effective alternative to conventional equipments. The feasibility of high resolution and multicolour CARS imaging has already been demonstrated with this dual output laser.

FEATURES

- Pump and Stokes output
- Maintenance-free
- User-friendly
- Excellent spectral resolution
< 0.1 cm⁻¹
- Pump output > 70mW
- Stokes output > 70mW
- Sub-nanosecond pulses
- SHG output at 532 nm
available
- Spatially singlemode

APPLICATIONS

- CARS
- Spectroscopy



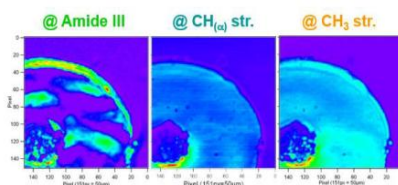
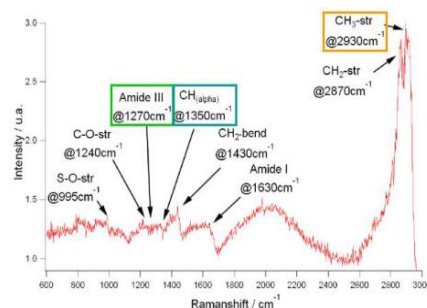
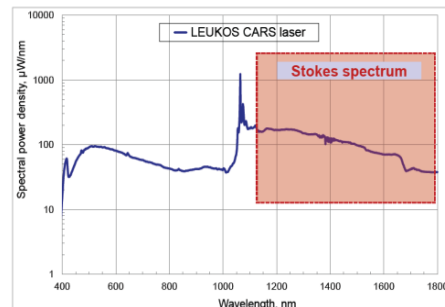
Opera

CARS laser source



| Optical specifications | Opera |
|------------------------|-------|
|------------------------|-------|

| | | |
|------------------------|---------------------------------------|-----------|
| Pump | | |
| Central wavelength | 1064 nm | |
| Total average power | > 70 mW | |
| Output | Free space or fibered | |
| Stokes | | |
| Spectral bandwidth | Min | < 420 nm |
| | Max | > 2400 nm |
| Output | FC/APC collimator (~1m armored cable) | |
| Total average power | > 70 mW | |
| Repetition rate | >30 kHz or triggered 10Hz – 20kHz | |
| Pulse width | ~ 1 ns | |
| Power stability | < +/-1.5% | |
| Synchronization output | Photodiode | |
| Interlock connector | 2-pin LEMO | |



Other specifications

| | |
|-----------------------|------------------------------|
| Control interface | Front panel and USB |
| Operating temperature | +0°C to +50°C non condensing |
| Weight | < 5kg |
| Dimensions (LxWxh) | 305x250x80 mm |
| Power requirements | 100-240 V, 50/60 Hz |

Options:

- 1 - Achromatic collimated output
- 2 - Synchronization of pump and Stokes beam
- 3 - 532nm generation

