



OEG
Optik
Elektronik
Gerätetechnik

EAC 500/65 IR

**Autocollimator with electronic image evaluation
in the infrared range**



Autocollimator with infrared camera and live image transmission of the measurement to the computer

Measuring functions

- Autocollimation 1D/2D
- transmitted light deflection/wedge angle (collimator telescope) 1D/2D
- double-pass deflection/wedge angle (AKF and counter mirror)
- wedge angle via double cross (evaluation of reflections from both surfaces of a glass wedge)
- optional continuous or triggered display and logging of measured values
- optional graphical or numerical display of the autocollimation/deflection angle to support adjustment tasks

EAC 500/65 IR

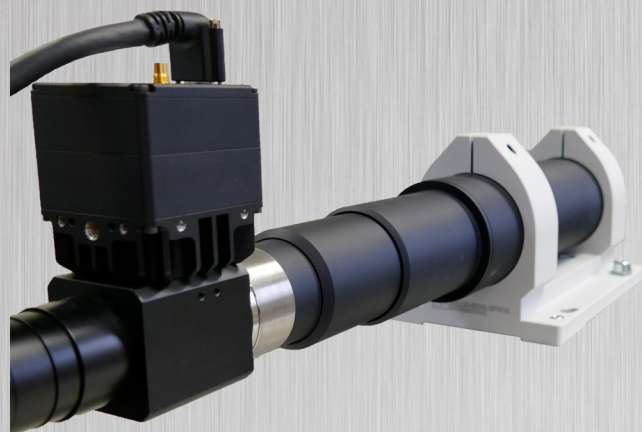
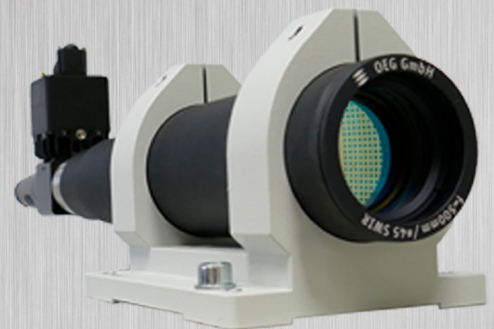
Autocollimator with electronic image evaluation
in the infrared range

Scope of delivery

- Autocollimator $f' = 500\text{mm}$; tube diameter = 65mm
 - Autocollimation head with C-mount for direct connection of a camera
 - Free aperture of 50mm
- Infrared camera NIT WidySens 640V - St
- LED illumination 1550 nm with power supply and controller for intensity control
- "Crossdetect" software for electronic image processing and for measurement acquisition

Technical data

camera	NIT WidySens 640V-ST
Camera Resolution	X - axis (vertical) 640 pixel
	Y - axis (horizontal) 512 pixel
spectral sensitivity	0.9 to 1.7 μm
overall system	
disbandment	0.1 arcsec
max. measuring field	X-axis = 1800 sec
	Y-axis = 1500 sec
precision	1 arcsec



Calibration

- delivery calibrated with factory calibration Certificate
- Calibration data are output as file

Data export

- Protocol generation and export
- Export of measured values as TXT file
- Communication via TCP/IP protocol
- Others on request