



- Interchangeable filter holders for 25 mm optics (10 positions) or 32 mm optics (7 positions)
- Smooth, high speed filter changes; Adjacent filter change time of 57 ms (10 position wheel)
- Built-in controller; daisy-chains with other Zaber products
- Mounting provided for optical cage systems and C-mount components

Product Description

Zaber's X-FWR Series devices are computer-controlled, motorized filter wheels with high speed filter change capabilities, a low profile, and interchangeable filter holders. Each filter wheel is sold with one included filter holder (FH0625 for 10 x 25 mm filter positions or FH0632 for 7 x 32 mm filter positions). The X-FWR filter wheels are stand-alone units requiring only a standard 48 V power supply. An indexed knob provides convenient manual control for versatile operation even without a computer.

These devices connect to the RS-232 port or USB port of any computer, and they can be daisy-chained with any other Zaber products. The daisy-chain also shares power, making it possible for multiple X-Series products to share a single power supply. Convenient locking, 4-pin, M8 connectors on the unit allow for secure connection between units. Like all of Zaber's products, the X-FWR Series is designed to be 'plug and play' and very easy to set up and operate.

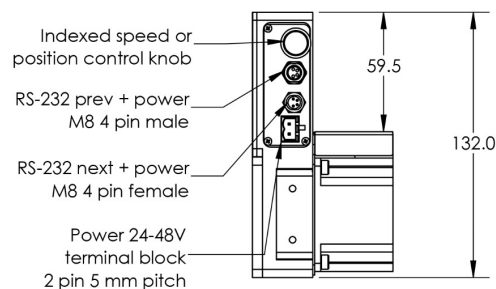
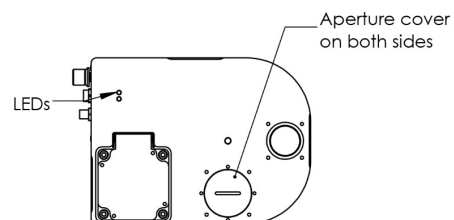
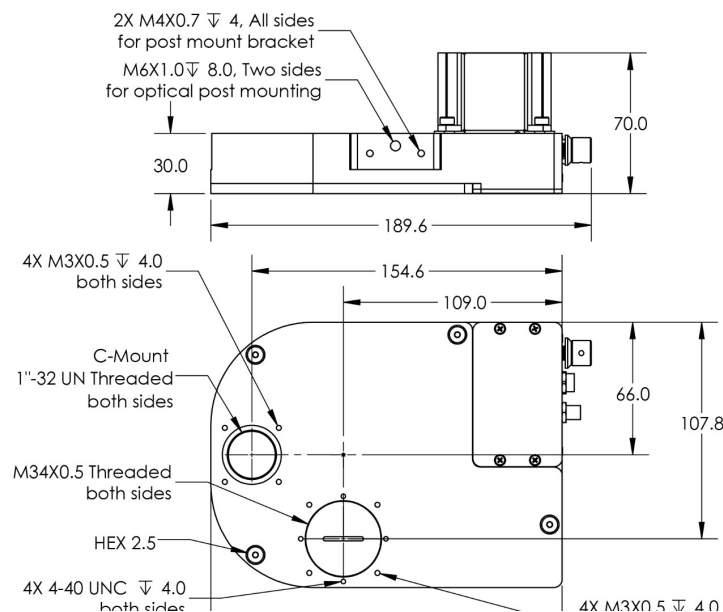
Dimension Drawings

Model Number*	# Of Positions	Lens Thread
X-FWR06A-FH0625	10	M27X0.5
X-FWR06A-FH0632	7	M32.5X0.5

Included accessories:

- One of FH0625 or FH0632 filter holders
- 4X Aperture covers for 25 & 32 mm apertures

*See product page for more details at www.zaber.com



Product Specifications

Specification	Value	Alternate Unit
Microstep Size (Default Resolution)	0.010714285°	186.996 µrad
Built-in Controller	Yes	
Range	360°	
Accuracy (unidirectional)	0.4°	6.980000 mrad
Repeatability	< 0.1°	< 1.745 mrad
Backlash	< 0.19°	< 3.316 mrad
Communication Interface	RS-232	
Communication Protocol	Zaber ASCII (Default), Zaber Binary	
Compatible Optic Thickness	6.5 mm	0.3 "
Compatible Optic Diameter	25 mm, 1 "	
Adjacent Optic Change Time	57 ms	
Number of Optics	10	
Maximum Current Draw	650 mA	
Power Supply	24-48 VDC	
Power Plug	2-pin Screw Terminal	
Motor Steps Per Rev	200	
Motor Type	Stepper (2 phase)	
Motor Rated Current	2100 mA/phase	
Inductance	3.2 mH/phase	
Default Resolution	1/56 of a step	
Data Cable Connection	Locking 4-pin M8	
Motor Frame Size	NEMA 23	
Mechanical Drive System	Synchronous belt	
Limit or Home Sensing	Magnetic home sensor	
Manual Control	Yes	
Mounting Interface	M6 threaded hole for optic post, M3 holes for AP134 post mount adaptor	
Operating Temperature Range	0-50 °C	
RoHS Compliant	Yes	
CE Compliant	Yes	
Weight	1.478 kg	3.258 lb