



Metrology instrument semiconductor

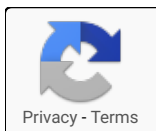
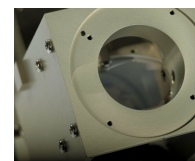
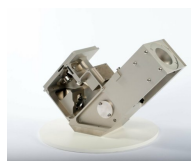
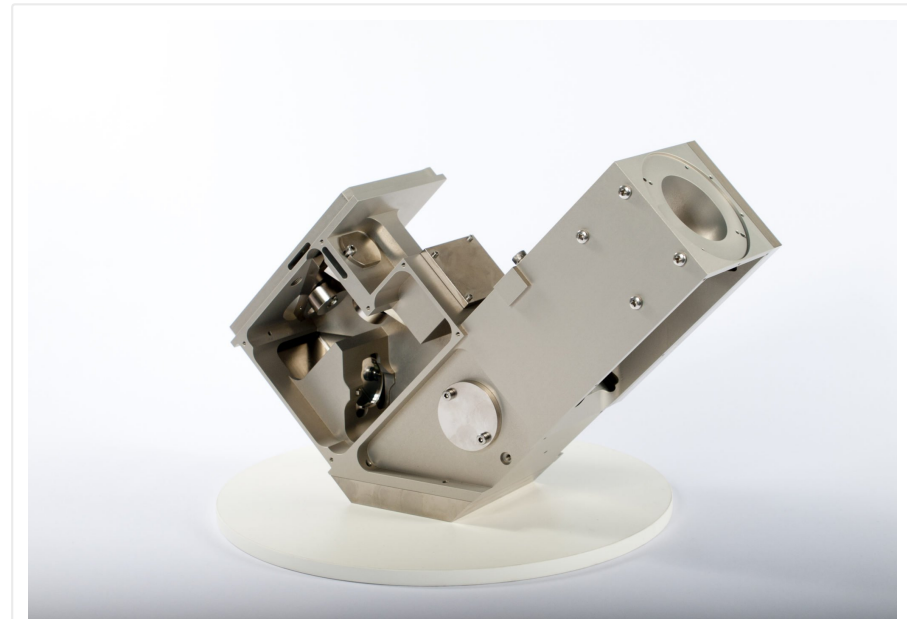
You are here: [Home](#) / [Shop](#) / [semiconductor](#) / [Metrology instrument semiconductor](#)

A metrology instrument, incorporating mechanics, optics and electronics, for accurate measurement and control of the position of the central laser beam

In-house capabilities metrology instrument:

- Precision machining
- Optical alignment & cementing
- Cleanroom assembly
- Qualification testing
- Maintenance and repair

Material: ALU and glass



- Flatness: $\pm 10\mu$
- Mechanical accuracy: $\pm 20\mu$
- Surface treatment: $\pm 2\mu$

 [Send me more information](#)

Category: [semiconductor](#)

Related products



Sensor for laser beam intensity

Alignment tool semiconductor

Thrust bearing vacuum piston glued into glass

Laser beam assy