

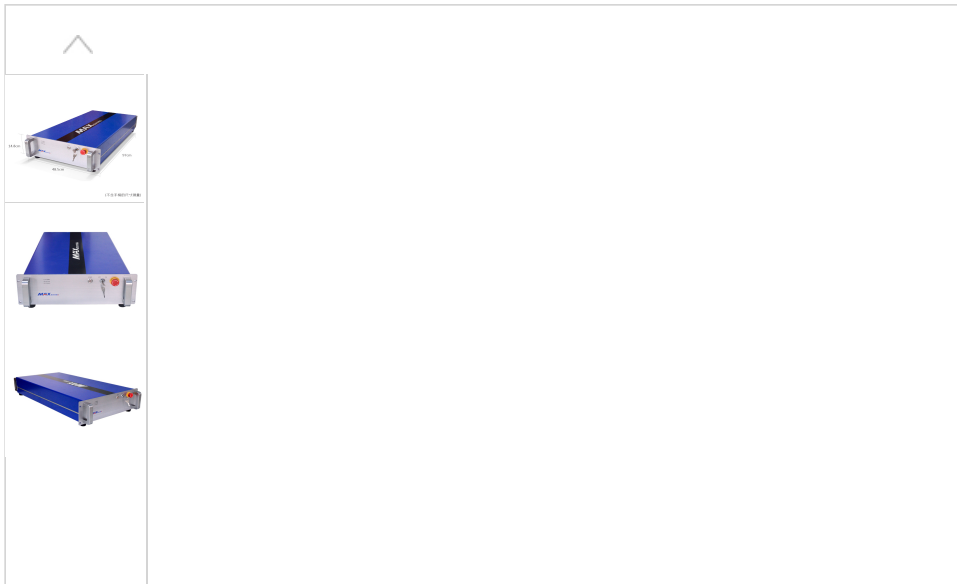


- HOME
- COMPANY
- PRODUCTS&SOLUTION
- APPLICATION
- NEWS
- SERVICES
- CONTACT
- SHOPPING MALL
- VR
- Q

- All
- Pulse fiber laser series
- CW fiber laser series
- Research fiber laser series
- Semiconductor laser series
- Optical passive d

Online Service ×

- Online Service
 - Chrissie-Russia
 - April-South Asia
 - Tina-South America



MaxMFSC 1200W-1500W Single Mode Continuous Fiber Lasers

MFSC500W-1000W Single-mode continuous fiber laser using adopt water-cooled, it has high power, perfect beam quality and high electro-optical conversion efficiency, and can realize optical fiber transmission. This kind of laser system has extraordinary high reliability to other solid lasers and gas lasers. It is the best choice for cutting , welding and drilling on stainless steel, carbon steel, aluminum, copper and other metal materials,widely used for sheet metal cutting, metal processing, home appliances manufacturing, automotive manufacturing and other industrial field.

[Inquiry](#)[Share](#)[Catalog](#)[Instructions](#)[E-Mail](#)

Product features

- High photoelectric conversion efficiency
- Excellent beam quality
- Super reliability

Product parameters

Optical Characteristic Parameters							
No.	Characteristics	Test conditions	Min.	Nom.	Max.		
1	Operation mode	CW/Modulated					
2	Polarization	Random					
3	Output power 1200W	100% CW		1200			
	Output power 1300W	100% CW		1300			
	Output power 1500W	100%CW		1500			
4	Tuning range of output power		10		100	%	
5	Emission wavelength	100% CW	1070	1080	1090	nm	
6	Spectrum width(3dB)	100% CW		3	4	nm	
7	Short-term power instability	100% CW>1h		1	3	%	
8	Long-term power instability	100% CW>24h		3	5	%	
9	Beam quality M ²	100%CW (20u-QBH)			1.3		
		100%CW (50u-QBH)			2.8		
10	Laser switching ON time	10% → 90%Output		50	80	us	

Online Service

✕

- ▼ Online Service

- Chrissie-Russia

- April-South Asia

- Tina-South America

11	Laser switching OFF time	90% → 10%Output		30	50	us
12	Modulation rate	100% Output		20	50	KHz
13	Red guide laser power	100% Output	150			uw
14	Feeding fiber cable length	MFSC-1200W		15		m
		MFSC-1300W				
		MFSC-1500W				
15	Feeding fiber core size	50 (30、100 optional)				um
16	Feeding fiber cable bending radius		200			mm
17	Output form	Standard QCS/QBH (LOC)				

General Characteristic Parameters

No.	Characteristics	Test conditions	Min.	Nom.	Max.	
1	Operating voltage		180	220	240	
2	Nominal power consumption MFSC-1200W	100% Output			4.8	
	Nominal power consumption MFSC-1300W	100% Output			5.2	
	Nominal power consumption MFSC-1500W	100% Output			6	
3	Operating ambient temperature		10		40	°C
4	Operating ambient relative humidity		10		85	%
5	Cooling method	Water-cooling				
6	Storage temperature		-10		60	°C
7	Dimensions	970*483*169				mm
8	Weight				88	kg

For reference only. Other beam diameter available by order.

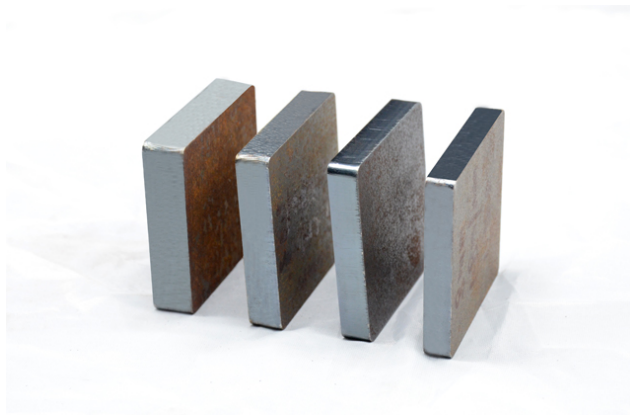
Online Service ×

▾ Online Service
 Chrissie-Russia
 April-South Asia
 Tina-South America

Samples display



6mm carbon steel fine cutting



6mm / 8mm / 10mm / 12mm carbon steel cut

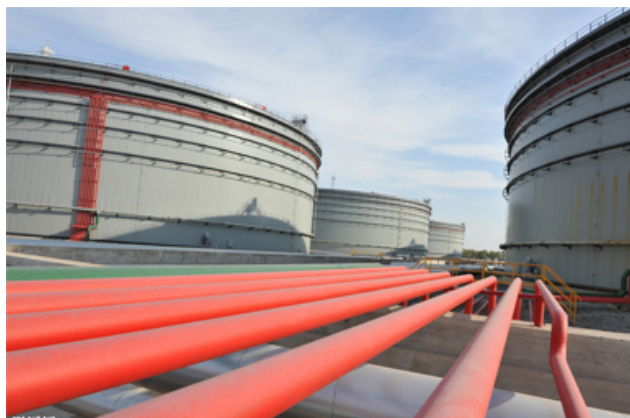


6mm carbon

Application industry



Aerospace Industry.



The oil industry

Online Service ×

- ▾ Online Service
 - Chrissie-Russia
 - April-South Asia
 - Tina-South America

NEWSLETTER

Company

- About us
- Milestone

Products

- Pulsed fiber laser series
- CW fiber laser series

Application

- Application Area
- Industrial Application

News

- Maxphotonics News
- Industrial News

Services

- Sales Service
- Download

Consult

- Contact Us
- FAQ

Enter your email

Advantage

Research laser series

Exhibition

Online repair

Honor

Semiconductor Laser Series

Enter your message

Network

Optical Passive Devices

Laser solutions

SEND



Genesis Laser Copyright

09009148 ©2010-2016 Maxphotonics all right reserved

Online Service ×

▾ Online Service

Chrissie-Russia

April-South Asia

Tina-South America