



Miltec UV- The Power of Excellence.

QUALITY, RELIABILITY, PERFORMANCE.

MPI 3D Cure

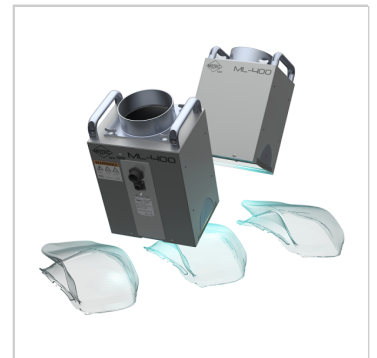
Description:

Miltec UV's 3D Cure System is designed to handle simple to the most complex custom 3D cure applications, including those with varying parts, sizes, and shapes moving through a single production line. Our advanced technology provides consistent 3D curing of inks, stains, coatings, and adhesives. This model incorporates our MPI microwave technology system with its significant performance advantages- consistent UV output, exceptional cooling, easy maintenance and low operating and energy costs. The use of our modular lamp style allows for ease of installation and movement of the lamp at various angles to accommodate complex part geometries.

Contact us to discuss your application.

Benefits and Features:

- ▶ Reliable performance with consistent UV output
- ▶ Modular lamp for easy angular lamp movement for complex part geometries
- ▶ Patented features with significant performance advantages
- ▶ Easy maintenance and exceptional ongoing technical service
- ▶ Easy retrofit to replace old equipment
- ▶ Use of custom UV output bulbs for more efficient cure of many UV chemistries



- ▶ Automotive Headlights
- ▶ Automotive Interior Trim Components
- ▶ Aircraft Wood Components
- ▶ Medical
- ▶ Wood Molding and Profiles
- ▶ Plastic
- ▶ Metal
- ▶ 3D UV curing
- ▶ Custom parts
- ▶ Specialty UV curing

Specifications:

MP-400 Power Supply Specifications:

Primary power choices:

Standard Power Supply:	240-480vac (60hz), 380-415vac (50hz)
CE Power Supply:	380-480vac (60hz), 380-415vac (50hz)
Electrical requirement:	At 480vac 60hz, L1-7A, L2-7A, L3-11A; At 400vac 50hz, L1-8A, L2-8A, L3-15A
Control functions:	Power: On/Off Lamp: On/Standby/Off Power select: Low/High
Remote control inputs:	Lamp On/Lamp Off/Low Power
Safety Interlock inputs:	System blower/External Interlock
Relay outputs:	Filament On/HV On/Low Power/Lamp On/Press Enable

Standard Power Supply Weight:	160lbs. (72.6kg)
--------------------------------------	------------------

This website uses cookies to improve your experience. We'll assume you're ok with this, but you can opt-out if you wish. [Cookie settings](#)

ACCEPT

Weight:	
Standard Power Supply Dimensions:	31.27 in L x 17.50 in W x 8.25 in H (794mm x 445 mm x 210 mm)
CE Power Supply Dimensions:	788mm x 433mm x 222mm
Standard cable lengths:	2m, 3m, 4m, 5m, 6m, 8m, 11m, 14m, 16m, 17m 21m, 26m, 31m, 38m
CE Certification	(MP-400 CE Only)

ML-400 Lamp Module Specifications

Weight:	33.6 lbs. (15.25 kg)
Dimensions:	10.52 in. W x 15.34 in. H x 8.88 in. D (267mm x 390 mm x 226 mm)
Material and Finish:	Brushed Stainless Steel
Optimum focus:	2.1" (53mm) with respect to the bottom of the housing
Air Cooling requirements:	250 SCFM @ 5.5 – 7.0 inches W.C. (7.1 M ³ /min.@1370-1740 Pascals)
Options:	Cold mirror reflector, Integral Cooling Blower, Top Connector Lamp (ML-401), Bulb Fills (H, H+, D & V)
Cure Width:	10 inches (254mm)

This website uses cookies to improve your experience. We'll assume you're ok with this, but you can opt-out if you wish. [Cookie settings](#)

ACCEPT

