

NATIONAL APERTURE, INC.

P: 800-360-4598 ~ F: 603-893-7857



HOME MOTION PRODUCTS INFORMATION APERTURE PRODUCTS TERMS CONTACT US

Motorized Stages

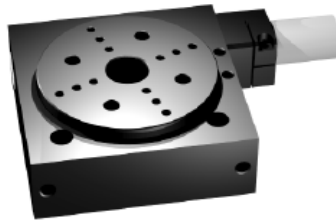
MM-4M-R

Rotary Motorized MicroMini™ Stages

FEATURES

- ❖ Ultra-low axial/angular runout
- ❖ Multi-faceted connection interface
- ❖ Anti-backlash worm drive system
- ❖ Option among 3 gearhead ratios used with 30:1 or 90:1 worm drive ratio

When ordering multi-axis units the completed assembly will include all necessary braces, kits and hardware



[View Schematic](#)

GENERAL DATA:

- ❖ **Load capacity:** 4.5 kg Direct Top Load
- ❖ **Moment Load:** 570 mNm
- ❖ **Rotary Travel:** 360°
- ❖ **Table Speed:** 1.7 rad/sec (std)
- ❖ **Weight:** 512 grams

GENERAL PRECISION:

- ❖ **Repeatability:** 300 µrad
- ❖ **Accuracy:** 1100 µrad
- ❖ **Axial Wobble:** 150 µrad
- ❖ **Planar Shift:** 0.6 µm
- ❖ **Eccentricity:** 2.5 µm

Product Selector

NOTE: If viewing on a cell phone, landscape mode is recommended.

SELECT SPEED/RESOLUTION

5.05 rad/sec/237.20 µrad/count ▾ Vacuum Compatibility ▾

Qty:

[Click here for accessories](#)

3D models available

Speed & Resolution		Specifications					
Speed/Resolution	Max. Travel Rate		Resolution			GH Ratio	Worm Gear Ratio
	rad/sec	deg/sec	µrad/count	deg/count	arcsec/count		
SPRS1	5.0579	289.7963	237.2003	0.013591	48.926074	14:1	30:1
SPRS2	1.6868	96.6465	79.0691	0.004530	16.309173	14:1	90:1
SPRS3	1.6257	93.1457	76.2430	0.004368	15.726248	43:1	30:1
SPRS4	1.0537	60.3726	49.4167	0.002831	10.192926	66:1	30:1
SPRS5	0.5422	31.0658	25.4151	0.001456	5.242241	43:1	90:1
SPRS6	0.3154	20.1337	16.4727	0.000944	3.397738	66:1	90:1

Shopping Cart

Items List

Part	Qty	Price	Subtotal
Total: \$0.00			
clear items			



[Download Catalog](#)

Motorized Stages

- [MM-1M Linear](#)
- [MM-3M-ST Linear](#)
- [MM-3M-FOS Linear](#)
- [MM-3M-F Linear](#)
- [MM-4M-F Linear](#)
- [MM-4M-EX Linear](#)
- [MM-5M Linear](#)
- [MM-3M-R Rotary](#)
- [MM-4M-R Rotary](#)
- [MM-3M-G Goniometer](#)
- [MM-4M-G Goniometer](#)